

À des fins de recherche uniquement

Anticorps Polyclonal de lapin anti-SETDB1



Numéro de catalogue: 11231-1-AP

Phare

70 Publications

Informations de base

Numéro de catalogue:
11231-1-AP

Taille:
150ul, Concentration: 700 µg/ml by
Nanodrop;

Hôte:
Lapin

Isotype:
IgG

Immunogen Catalog Number:
AG1725

Numéro d'acquisition GenBank:
BC009362

Identification du gène (NCBI):
9869

Nom complet:
SET domain, bifurcated 1

MW calculé
143 kDa

MW observés:
170 kDa

Méthode de purification:
Purification par affinité contre
l'antigène

Dilutions recommandées:
WB 1:500-1:2000
IP 0.5-4.0 µg for IP and 1:500-1:2000
for WB
IHC 1:50-1:500
IF 1:200-1:800

Applications

Applications testées:
IF, IHC, IP, WB, ELISA

Demandes citées:
ChIP, CoIP, IF, IHC, IP, WB

Spécificité de l'espèce:
Humain

Espèces citées:
Humain, souris

Remarque-IHC: il est suggéré de démasquer l'antigène avec un tampon de TE buffer pH 9,0; (*) À défaut, le démasquage de l'antigène peut être effectué avec un tampon citrate pH 6,0.

Contrôles positifs:

WB : cellules Jurkat, cellules HEK-293, cellules HeLa, cellules MCF-7, cellules PC-3, tissu testiculaire humain

IP : cellules MCF-7,

IHC : tissu de cancer du poumon humain, tissu testiculaire humain

IF : cellules A431,

Informations générales

SETDB1, also named as ESET, KIAA0067 and KMT1E, belongs to the histone-lysine methyltransferase family. It is a SET domain protein with histone H3-K9-specific methyltransferase activity. H3 'Lys-9' trimethylation is coordinated with DNA methylation and represents a specific tag for epigenetic transcriptional repression by recruiting HP1 (CBX1, CBX3 and/or CBX5) proteins to methylated histones. SETDB1 mainly functions in euchromatin regions, thereby playing a central role in the silencing of euchromatic genes. It probably forms a complex with MBD1 and ATF7IP that represses transcription and couples DNA methylation and histone 'Lys-9' trimethylation. Its activity is dependent on MBD1 and is heritably maintained through DNA replication by being recruited by CAF-1. SETDB1 regulates histone methylation, gene silencing, and transcriptional repression. It has been identified as a target for treatment in Huntington Disease, given that gene silencing and transcription dysfunction likely play a role in the disease pathogenesis. This antibody is a rabbit polyclonal antibody raised against residues near the N terminus of human SETDB1. The calculated molecular weight of SETDB1 is 143 kDa, but the modified SETDB1 protein is about 170 kDa (PMID: 11791185).

Publications notables

| Autrice | Pubmed ID | Journal | Application |
|--------------|-----------|----------------------|-------------|
| Keli Chen | 29158805 | J Cancer | chIP |
| Qi Li | 34497149 | J Immunol | ChIP |
| Tiantian Liu | 28890329 | Biochim Biophys Acta | chIP |

Stockage

Stockage:

Stocker à -20°C. Stable pendant un an après l'expédition.

Tampon de stockage:

PBS avec azoture de sodium à 0,02 % et glycérol à 50 % pH 7,3

L'aliquotage n'est pas nécessaire pour le stockage à -20C

*** Les 20ul contiennent 0,1% de BSA.

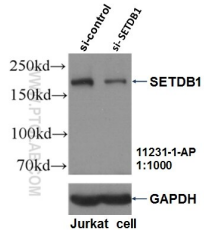
For technical support and original validation data for this product please contact:

T: 1 (888) 4PTGLAB (1-888-478-4522) (toll free in USA), or 1(312) 455-8498 (outside USA)

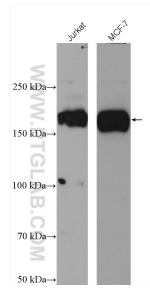
E: proteintech@ptglab.com
W: ptglab.com

This product is exclusively available under Proteintech Group brand and is not available to purchase from any other manufacturer.

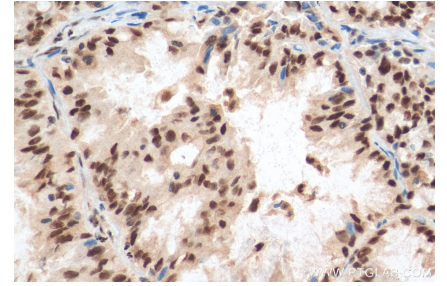
Données de validation sélectionnées



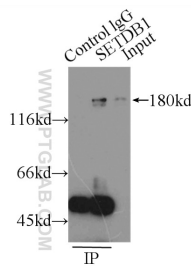
WB result of SETDB1 antibody (11231-1-AP, 1:1000) with si-Control and si-SETDB1 transfected Jurkat cells.



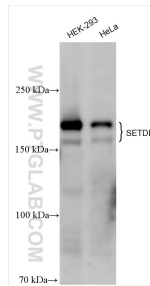
Various lysates were subjected to SDS PAGE followed by western blot with 11231-1-AP (SETDB1 antibody) at dilution of 1:1000 incubated at room temperature for 1.5 hours.



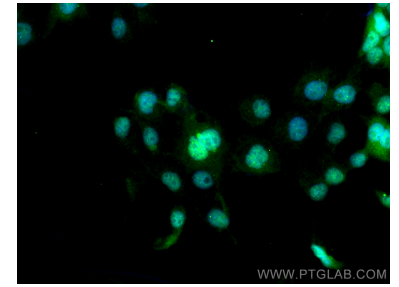
Immunohistochemical analysis of paraffin-embedded human lung cancer tissue slide using 11231-1-AP (SETDB1 antibody) at dilution of 1:200 (under 40x lens). Heat mediated antigen retrieval with Tris-EDTA buffer (pH 9.0).



IP Result of anti-SETDB1 (IP:11231-1-AP, 3ug; Detection:11231-1-AP 1:1000) with MCF-7 cells lysate 2500ug.



Various lysates were subjected to SDS PAGE followed by western blot with 11231-1-AP (SETDB1 antibody) at dilution of 1:10000 incubated at room temperature for 1.5 hours.



Immunofluorescent analysis of (4% PFA) fixed A431 cells using SETDB1 antibody (11231-1-AP) at dilution of 1:400 and CoraLite@488-Conjugated AffiniPure Goat Anti-Rabbit IgG(H+L).