

À des fins de recherche uniquement

Anticorps Polyclonal de lapin anti-EIF2A/CDA02



Numéro de catalogue: 11233-1-AP

Phare

57 Publications

Informations de base

Numéro de catalogue:
11233-1-AP

Taille:
150ul, Concentration: 800 µg/ml by
Nanodrop;

Hôte:
Lapin

Isotype:
IgG

Immunogen Catalog Number:
AG1753

Numéro d'acquisition GenBank:
BC011885

Identification du gène (NCBI):
83939

Nom complet:
eukaryotic translation initiation
factor 2A, 65kDa

MW calculé
65 kDa

MW observés:
65 kDa

Méthode de purification:
Purification par affinité contre
l'antigène

Dilutions recommandées:
WB 1:1000-1:8000
IP 0.5-4.0 µg for IP and 1:500-1:2000
for WB
IHC 1:20-1:200
IF 1:200-1:800

Applications

Applications testées:
FC, IF, IHC, IP, WB, ELISA

Demandes citées:
IF, IHC, WB

Spécificité de l'espèce:
Humain, rat, souris

Espèces citées:
Humain, rat, souris

Remarque-IHC: il est suggéré de démasquer l'antigène avec un tampon de TE buffer pH 9,0; (*) À défaut, le démasquage de l'antigène peut être effectué avec un tampon citrate pH 6,0.

Contrôles positifs:

WB : cellules MCF-7, cellules HEK-293T, cellules HeLa, cellules PC-12

IP : cellules MCF-7,

IHC : tissu de cancer de la prostate humain, tissu pancréatique humain

IF : cellules HepG2, cellules HepG2 traitées à l'acide éthacrynique

Informations générales

EIF2A, also named as CDA02, MSTP004 and MSTP089, belongs to the WD repeat EIF2A family. It functions in the early steps of protein synthesis of a small number of specific mRNAs. EIF2A, an alternative initiator tRNA-binding protein, has a key role in the translation of HCV mRNA during HCV infection, in turn promoting eIF2a phosphorylation by activating the eIF2a kinase PKR. This antibody is a rabbit polyclonal antibody raised against residues near the C terminus of human EIF2A, recognizes specifically the 65kd EIF2A protein. EIF2A (Gene ID: 83939) and EIF2S1 (Gene ID: 1965) share the EIF2A symbol/alias in common. EIF2S1 is the alpha subunit of the EIF2 translation initiation complex. Although both of these proteins function in binding initiator tRNA to the 40S ribosomal subunit, the EIF2A protein does so in a codon-dependent manner, whereas eIF2 complex requires GTP.

Publications notables

Autrice	Pubmed ID	Journal	Application
Yun Chen	32996245	J Cell Mol Med	WB
Tao Wang	36151083	Nat Commun	IF
Yonghua Chen	30181379	Biosci Rep	WB

Stockage

Stockage:

Stocker à -20°C. Stable pendant un an après l'expédition.

Tampon de stockage:

PBS avec azoture de sodium à 0,02 % et glycérol à 50 % pH 7,3

L'aliquotage n'est pas nécessaire pour le stockage à -20C

*** Les 20ul contiennent 0,1% de BSA.

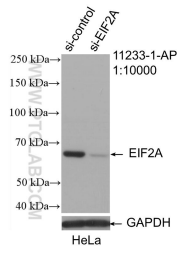
For technical support and original validation data for this product please contact:

T: 1 (888) 4PTGLAB (1-888-478-4522) (toll free in USA), or 1(312) 455-8498 (outside USA)

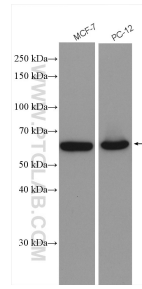
E: proteintech@ptglab.com
W: ptglab.com

This product is exclusively available under Proteintech Group brand and is not available to purchase from any other manufacturer.

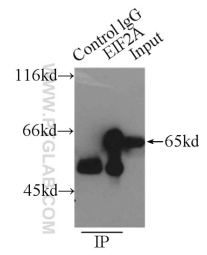
Données de validation sélectionnées



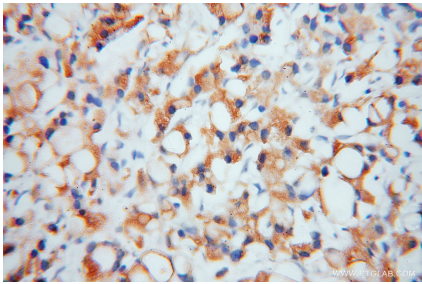
WB result of EIF2A/CDA02 antibody (11233-1-AP; 1:10000; incubated at room temperature for 1.5 hours) with sh-Control and sh-EIF2A/CDA02 transfected HeLa cells.



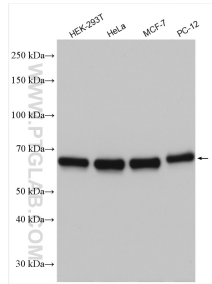
Various lysates were subjected to SDS PAGE followed by western blot with 11233-1-AP (EIF2A/CDA02 antibody) at dilution of 1:4000 incubated at room temperature for 1.5 hours.



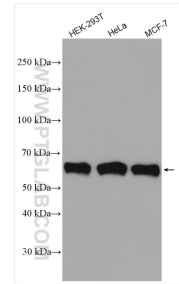
IP Result of anti-EIF2A (IP:11233-1-AP, 3ug; Detection:11233-1-AP 1:1000) with MCF-7 cells lysate 3250ug.



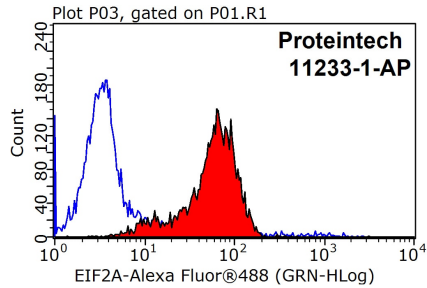
Immunohistochemical analysis of paraffin-embedded human prostate cancer using 11233-1-AP (EIF2A antibody) at dilution of 1:50 (under 40x lens).



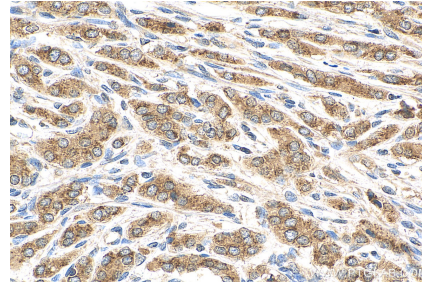
Various lysates were subjected to SDS PAGE followed by western blot with 11233-1-AP (EIF2A/CDA02 antibody) at dilution of 1:10000 incubated at room temperature for 1.5 hours.



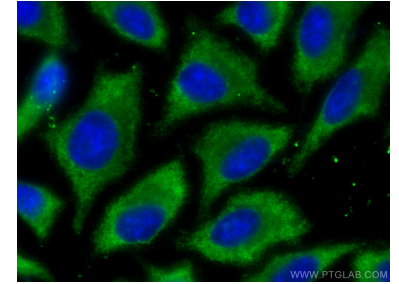
Various lysates were subjected to SDS PAGE followed by western blot with 11233-1-AP (EIF2A/CDA02 antibody) at dilution of 1:8000 incubated at room temperature for 1.5 hours.



1X10⁶ HepG2 cells were stained with .2ug EIF2A antibody (11233-1-AP, red) and control antibody (blue). Fixed with 90% MeOH blocked with 3% BSA (30 min). Alexa Fluor 488-conjugated AffiniPure Goat Anti-Rabbit IgG(H+L) with dilution 1:1000.



Immunohistochemical analysis of paraffin-embedded human prostate cancer tissue slide using 11233-1-AP (EIF2A/CDA02 antibody) at dilution of 1:200 (under 40x lens). Heat mediated antigen retrieval with Tris-EDTA buffer (pH 9.0).



Immunofluorescent analysis of (-20°C Ethanol) fixed HepG2 cells using EIF2A/CDA02 antibody (11233-1-AP) at dilution of 1:400 and CoraLite@488-Conjugated AffiniPure Goat Anti-Rabbit IgG(H+L).