

À des fins de recherche uniquement

Anticorps Polyclonal de lapin anti-CREB3L1,OASIS



Numéro de catalogue: 11235-2-AP

Phare

9 Publications

Informations de base

Numéro de catalogue:
11235-2-AP

Taille:
150ul , Concentration: 850 µg/ml by Nanodrop and 400 µg/ml by Bradford method using BSA as the standard;

Hôte:
Lapin

Isotype:
IgG

Immunogen Catalog Number:
AG1757

Numéro d'acquisition GenBank:
BC015781

Identification du gène (NCBI):
90993

Nom complet:
cAMP responsive element binding protein 3-like 1

MW calculé

57 kDa

MW observés:
55-58 kDa and 84 kDa

Méthode de purification:
Purification par affinité contre l'antigène

Dilutions recommandées:
WB 1:500-1:1000
IHC 1:20-1:200
IF 1:50-1:500

Applications

Applications testées:
IF, IHC, WB, ELISA

Demandes citées:
IHC, WB

Spécificité de l'espèce:
Humain, rat, souris

Espèces citées:
Humain, rat

Remarque-IHC: il est suggéré de démasquer l'antigène avec un tampon de TE buffer pH 9,0; (*) A défaut, 'le démasquage de l'antigène peut être 'effectué avec un tampon citrate pH 6,0.

Contrôles positifs:

WB : cellules A549, cellules COLO 320

IHC : tissu de cancer de la prostate humain,

IF : cellules A549,

Informations générales

Cyclic AMP-responsive element-binding protein 3-like protein 1(CREB3L1) belongs to a family of transcription factors that are synthesized as membrane-bound precursors in the endoplasmic reticulum (ER) and then transported to the Golgi where they are activated through regulated intramembrane proteolysis (RIP). Also it participates in ER-stress response in astrocytes in the central nervous system. It may has a role in gliosis, and involves in activation of transcription through box-B element but not CRE. CREB3L1 acts as a transcription repressor in proliferation of virus-infected cell. The full-length precursor form (approximately 84 kDa) of CREB3L1 and the matured form of CREB3L1 is 58 kDa. (PMID: 20668028)

Publications notables

Autrice	Pubmed ID	Journal	Application
Mei-Xuan Wan	36299877	Front Pharmacol	WB
Xiaomei Liu	30524373	Front Endocrinol (Lausanne)	WB
Wei Xiao	31293656	J Cancer	IHC

Stockage

Stockage:

Stocker à -20°C. Stable pendant un an après l'expédition.

Tampon de stockage:

PBS avec azoture de sodium à 0,02 % et glycérol à 50 % pH 7,3

L'aliquotage n'est pas nécessaire pour le stockage à -20C

*** Les 20ul contiennent 0,1% de BSA.

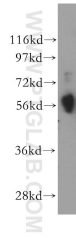
For technical support and original validation data for this product please contact:

T: 1 (888) 4PTGLAB (1-888-478-4522) (toll free in USA), or 1(312) 455-8498 (outside USA)

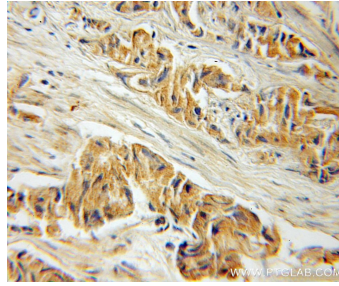
E: proteintech@ptglab.com
W: ptglab.com

This product is exclusively available under Proteintech Group brand and is not available to purchase from any other manufacturer.

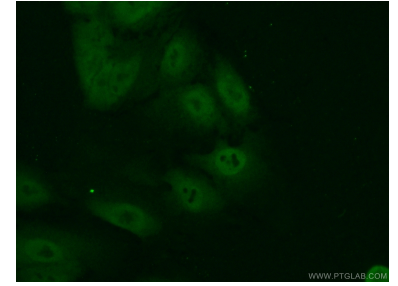
Données de validation sélectionnées



A549 cells were subjected to SDS PAGE followed by western blot with 11235-2-AP (CREB3L1, OASIS antibody) at dilution of 1:300 incubated at room temperature for 1.5 hours. This batch of A549 cells lysate predominantly expressed the maturer form likely due to cell stage.



Immunohistochemical analysis of paraffin-embedded human prostate cancer using 11235-2-AP (CREB3L1, OASIS antibody) at dilution of 1:50 (under 25x lens).



Immunofluorescent analysis of (10% Formaldehyde) fixed A549 cells using 11235-2-AP (CREB3L1, OASIS antibody) at dilution of 1:50 and Alexa Fluor 488-conjugated AffiniPure Goat Anti-Rabbit IgG(H+L).