

À des fins de recherche uniquement

# Anticorps Polyclonal de lapin anti-FLCN



Numéro de catalogue: 11236-2-AP

Phare

6 Publications

## Informations de base

Numéro de catalogue:  
11236-2-AP

Taille:  
150ul, Concentration: 700 µg/ml by Nanodrop and 433 µg/ml by Bradford method using BSA as the standard;

Hôte:  
Lapin

Isotype:  
IgG

Immunogen Catalog Number:  
AG1746

Numéro d'acquisition GenBank:  
BC015687

Identification du gène (NCBI):  
201163

Nom complet:  
folliculin

MW calculé  
38 kDa

MW observés:  
64-75 kDa

Méthode de purification:  
Purification par affinité contre l'antigène

Dilutions recommandées:  
WB 1:500-1:1000

## Applications

Applications testées:  
WB, ELISA

Demandes citées:  
IHC, IP, WB

Spécificité de l'espèce:  
Humain, rat, souris

Espèces citées:  
Humain, rat, souris

Contrôles positifs:

WB : cellules A431, cellules HEK-293, cellules HeLa, cellules NCCIT

## Informations générales

FLCN, also named as BHD, belongs to the folliculin family. It may play a role in the pathogenesis of an uncommon form of kidney cancer through its association with an inherited disorder of the hair follicle (fibrofolliculomas). FLCN may be a tumor suppressor. It is involved in colorectal tumorigenesis. It may be involved in energy and/or nutrient sensing through the AMPK and mTOR signaling pathways. Mutation of FLCN may cause the BHD (Birt-Hogg-Dube syndrome) or (PSP) primary spontaneous pneumothorax. And it may be involved in renal cell carcinoma.

## Publications notables

Autrice	Pubmed ID	Journal	Application
Xuyang Zhao	32850947	Front Mol Biosci	IHC
Kun Wu	33607355	J Trace Elem Med Biol	WB
Caterina Collodet	31404503	FASEBJ	WB,IP

## Stockage

Stockage:

Stocker à -20°C. Stable pendant un an après l'expédition.

Tampon de stockage:

PBS avec azoture de sodium à 0,02 % et glycérol à 50 % pH 7,3

L'aliquotage n'est pas nécessaire pour le stockage à -20C

\*\*\* Les 20ul contiennent 0,1% de BSA.

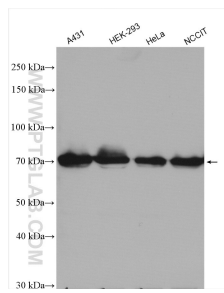
For technical support and original validation data for this product please contact:

T: 1 (888) 4PTGLAB (1-888-478-4522) (toll free in USA), or 1(312) 455-8498 (outside USA)

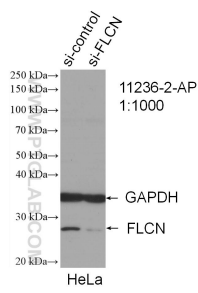
E: proteintech@ptglab.com  
W: ptglab.com

This product is exclusively available under Proteintech Group brand and is not available to purchase from any other manufacturer.

## Données de validation sélectionnées



Various lysates were subjected to SDS PAGE followed by western blot with 11236-2-AP (FLCN antibody) at dilution of 1:800 incubated at room temperature for 1.5 hours.



WB result of FLCN antibody (11236-2-AP; 1:1000; incubated at room temperature for 1.5 hours) with sh-Control and sh-FLCN transfected HeLa cells.