

À des fins de recherche uniquement

# Anticorps Polyclonal de lapin anti-MIRO2



Numéro de catalogue: 11237-1-AP

Phare

20 Publications

## Informations de base

Numéro de catalogue:

11237-1-AP

Taille:

150ul, Concentration: 700 µg/ml by Nanodrop;

Hôte:

Lapin

Isotype:

IgG

Immunogen Catalog Number:

AG1752

Numéro d'acquisition GenBank:

BC014942

Identification du gène (NCBI):

89941

Nom complet:

ras homolog gene family, member T2

MW calculé

68 kDa

MW observés:

80 kDa

Méthode de purification:

Purification par affinité contre l'antigène

Dilutions recommandées:

WB 1:1000-1:10000

IP 0.5-4.0 ug for IP and 1:1000-1:8000 for WB

IHC 1:50-1:500

## Applications

Applications testées:

IHC, IP, WB, ELISA

Demandes citées:

CoIP, IF, IHC, IP, WB

Spécificité de l'espèce:

Humain, souris

Espèces citées:

Humain, rat, singe, souris

Contrôles positifs:

WB : cellules HEK-293T, cellules HeLa, cellules HepG2, cellules K-562, cellules L02, tissu cardiaque de souris, tissu cardiaque humain, tissu rénal humain, tissu testiculaire humain

IP : cellules L02,

IHC : tissu de côlon humain, tissu cardiaque humain, tissu de cancer du poumon humain, tissu rénal humain

**Remarque-IHC: il est suggéré de démasquer l'antigène avec un tampon de TE buffer pH 9,0; (\*) À défaut, le démasquage de l'antigène peut être effectué avec un tampon citrate pH 6,0.**

## Informations générales

RHOT2 (Ras homolog gene family, member T2), also known as ARHT2, RASL or MIRO-2 (mitochondrial Rho GTPase 2), is a 618 amino acid single-pass type IV membrane protein as a member of the Rho family of GTPases. It is localized to the outer mitochondrial membrane and plays a role in mitochondrial trafficking and fusion-fission dynamics. RHOT2 is ubiquitously expressed with highest levels found in pancreas, heart, kidney and skeletal muscle. MIRO2 is highly phosphorylated at basal conditions, as evidenced by an immunoreactive band that electrophoretically migrates 7 kDa higher (~75 kDa) compared to its predicted molecular weight (68 kDa) (PMID: 28556983).

## Publications notables

Autrice	Pubmed ID	Journal	Application
Crystal A Lee	28924745	Protein Cell	WB,IF
Matthew Yoke Wui Ng	36270994	Nat Commun	WB
Tatiana Brustovetsky	34685760	Cells	WB, CoIP

## Stockage

Stockage:

Stocker à -20°C. Stable pendant un an après l'expédition.

Tampon de stockage:

PBS avec azoture de sodium à 0,02 % et glycérol à 50 % pH 7,3

L'aliquotage n'est pas nécessaire pour le stockage à -20C

\*\*\* Les 20ul contiennent 0,1% de BSA.

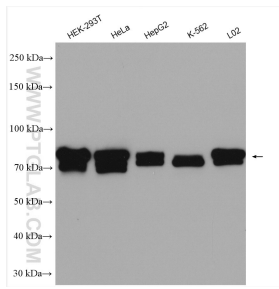
For technical support and original validation data for this product please contact:

T: 1 (888) 4PTGLAB (1-888-478-4522) (toll free in USA), or 1(312) 455-8498 (outside USA)

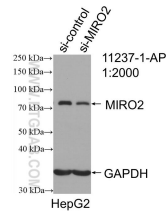
E: proteintech@ptglab.com  
W: ptglab.com

This product is exclusively available under Proteintech Group brand and is not available to purchase from any other manufacturer.

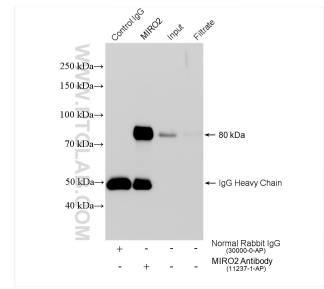
## Données de validation sélectionnées



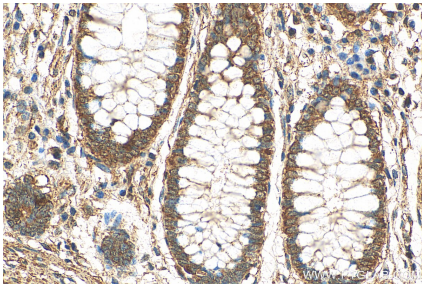
Various lysates were subjected to SDS PAGE followed by western blot with 11237-1-AP (MIRO2 antibody) at dilution of 1:10000 incubated at room temperature for 1.5 hours.



WB result of MIRO2 antibody (11237-1-AP; 1:2000; incubated at room temperature for 1.5 hours) with sh-Control and sh-MIRO2 transfected HepG2 cells.



IP result of anti-MIRO2(IP:11237-1-AP, 4ug; Detection:11237-1-AP 1:4000) with L02 cells lysate 3080 ug.



Immunohistochemical analysis of paraffin-embedded human colon tissue slide using 11237-1-AP (MIRO2 antibody) at dilution of 1:200 (under 40x lens). Heat mediated antigen retrieval with Tris-EDTA buffer (pH 9.0).