

À des fins de recherche uniquement

# Anticorps Polyclonal de lapin anti-NDUFV1



Numéro de catalogue: 11238-1-AP

Phare

40 Publications

## Informations de base

Numéro de catalogue:  
11238-1-AP

Taille:  
150ul, Concentration: 500 µg/ml by Nanodrop and 300 µg/ml by Bradford method using BSA as the standard;

Hôte:  
Lapin

Isotype:  
IgG

Immunogen Catalog Number:  
AG1764

Numéro d'acquisition GenBank:  
BC015645

Identification du gène (NCBI):  
4723

Nom complet:  
NADH dehydrogenase (ubiquinone) flavoprotein 1, 51kDa

MW calculé:  
51 kDa

MW observés:  
45 kDa

Méthode de purification:  
Purification par affinité contre l'antigène

Dilutions recommandées:  
WB 1:1000-1:8000  
IP 0.5-4.0 ug for IP and 1:500-1:1000 for WB  
IHC 1:50-1:500

## Applications

Applications testées:  
IHC, IP, WB, ELISA

Demandes citées:  
IF, IP, WB

Spécificité de l'espèce:  
Humain, rat, souris

Espèces citées:  
Humain, porc, rat, souris

**Remarque-IHC: il est suggéré de démasquer l'antigène avec un tampon de TE buffer pH 9,0; (\*) A défaut, 'le démasquage de l'antigène peut être 'effectué avec un tampon citrate pH 6,0.**

Contrôles positifs:

WB : cellules A549, cellules HEK-293, cellules HeLa, cellules HepG2, cellules U2OS, tissu cardiaque de souris

IP : cellules A431,

IHC : tissu de cancer du poumon humain,

## Informations générales

DUFV1(NADH dehydrogenase [ubiquinone] flavoprotein 1, mitochondrial) is also named as UQOR1,Complex I-51kDa and belongs to the complex I 51 kDa subunit family. It is the core subunit of the mitochondrial membrane respiratory chain NADH dehydrogenase (Complex I) that is believed to belong to the minimal assembly required for catalysis. It has 2 isoforms produced by alternative splicing. Defects in NDUFV1 are a cause of Leigh syndrome (LS) and mitochondrial complex I deficiency (MT-C1D).

## Publications notables

Autrice	Pubmed ID	Journal	Application
Erika Fernández-Vizarra	36198313	Cell Metab	WB
Ahmad Alahmad	32969598	EMBO Mol Med	WB
David A Stroud	27626371	Nature	WB

## Stockage

Stockage:

Stocker à -20°C. Stable pendant un an après l'expédition.

Tampon de stockage:

PBS avec azoture de sodium à 0,02 % et glycérol à 50 % pH 7,3

L'aliquotage n'est pas nécessaire pour le stockage à -20C

\*\*\* Les 20ul contiennent 0,1% de BSA.

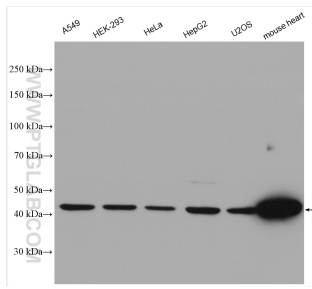
For technical support and original validation data for this product please contact:

T: 1 (888) 4PTGLAB (1-888-478-4522) (toll free in USA), or 1(312) 455-8498 (outside USA)

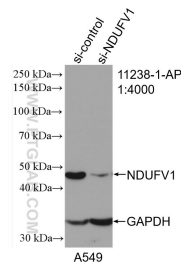
E: proteintech@ptglab.com  
W: ptglab.com

This product is exclusively available under Proteintech Group brand and is not available to purchase from any other manufacturer.

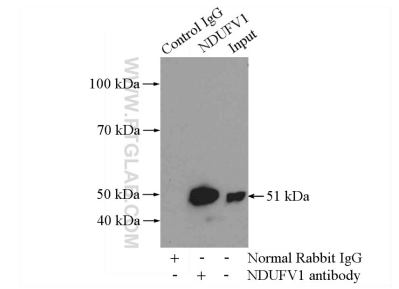
## Données de validation sélectionnées



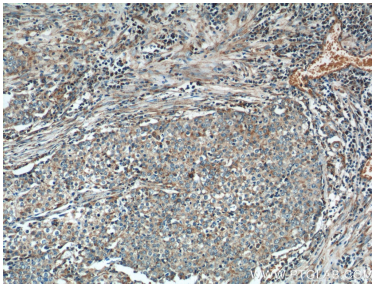
Various lysates were subjected to SDS PAGE followed by western blot with 11238-1-AP (NDUFV1 antibody) at dilution of 1:4000 incubated at room temperature for 1.5 hours.



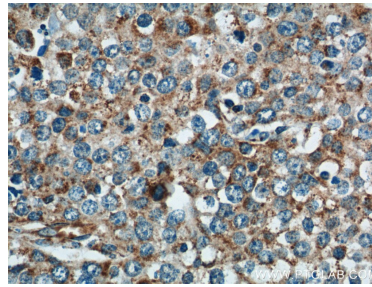
WB result of NDUFV1 antibody (11238-1-AP; 1:4000; incubated at room temperature for 1.5 hours) with sh-Control and sh-NDUFV1 transfected A549 cells.



IP Result of anti-NDUFV1 (IP:11238-1-AP, 4ug; Detection:11238-1-AP 1:500) with A431 cells lysate 2000ug.



Immunohistochemical analysis of paraffin-embedded human lung cancer tissue slide using 11238-1-AP (NDUFV1 Antibody) at dilution of 1:200 (under 10x lens).



Immunohistochemical analysis of paraffin-embedded human lung cancer tissue slide using 11238-1-AP (NDUFV1 Antibody) at dilution of 1:200 (under 40x lens).