

À des fins de recherche uniquement

Anticorps Polyclonal de lapin anti-Annexin A2



Numéro de catalogue: 11256-1-AP

Phare

56 Publications

Informations de base

Numéro de catalogue:

11256-1-AP

Taille:

150ul, Concentration: 600 µg/ml by Nanodrop;

Hôte:

Lapin

Isotype:

IgG

Immunogen Catalog Number:

AG1777

Numéro d'acquisition GenBank:

BC016774

Identification du gène (NCBI):

302

Nom complet:

annexin A2

MW calculé

339 aa, 39 kDa

MW observés:

35-40 kDa

Méthode de purification:

Purification par affinité contre l'antigène

Dilutions recommandées:

WB 1:1000-1:6000

IP 0.5-4.0 ug for IP and 1:1000-1:6000 for WB

IHC 1:50-1:500

IF 1:200-1:800

Applications

Applications testées:

FC, IF, IHC, IP, WB, ELISA

Demandes citées:

IF, IHC, IP, RIP, WB

Spécificité de l'espèce:

Humain, rat, souris

Espèces citées:

Humain, porc, poulet, rat, singe, souris

Remarque-IHC: il est suggéré de démasquer l'antigène avec un tampon de TE buffer pH 9.0; (*) À défaut, le démasquage de l'antigène peut être effectué avec un tampon citrate pH 6.0.

Contrôles positifs:

WB : cellules HeLa, cellules HEK-293, cellules HepG2, cellules NIH/3T3, tissu placentaire de souris, tissu rénal de souris

IP : cellules HeLa,

IHC : tissu hépatique humain, tissu de cancer de la prostate humaine, tissu de cancer de l'oesophage humain, tissu de cancer du poumon humain, tissu de cancer du sein humain, tissu de cirrhose hépatique humaine

IF : cellules T-47D, cellules HeLa, cellules MCF-7

Informations générales

Annexin A2 (ANXA2), also named Annexin-2 or Lipocortin II, is a Ca²⁺ binding protein that is up-regulated in virally transformed cell lines and human tumors. This calcium-regulated membrane-binding protein, whose affinity for calcium is greatly enhanced by anionic phospholipids, may cross-link plasma membrane phospholipids with actin and the cytoskeleton and be involved with exocytosis. Heat-stress response may also involve Annexin-2.

Publications notables

Autrice	Pubmed ID	Journal	Application
Ming Xiong	31695759	Theranostics	IHC
Binghui Liu	33320565	ACS Biomater Sci Eng	IHC
Di Huang	30224822	Nat Immunol	

Stockage

Stockage:

Stocker à -20°C. Stable pendant un an après l'expédition.

Tampon de stockage:

PBS avec azoture de sodium à 0,02 % et glycérol à 50 % pH 7,3

L'aliquotage n'est pas nécessaire pour le stockage à -20C

*** Les 20ul contiennent 0,1% de BSA.

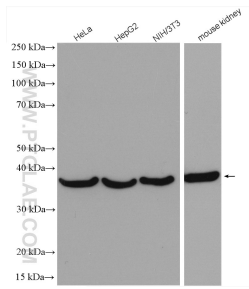
For technical support and original validation data for this product please contact:

T: 1 (888) 4PTGLAB (1-888-478-4522) (toll free in USA), or 1(312) 455-8498 (outside USA)

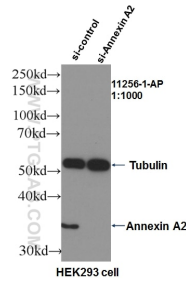
E: proteintech@ptglab.com
W: ptglab.com

This product is exclusively available under Proteintech Group brand and is not available to purchase from any other manufacturer.

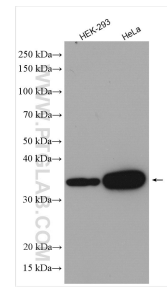
Données de validation sélectionnées



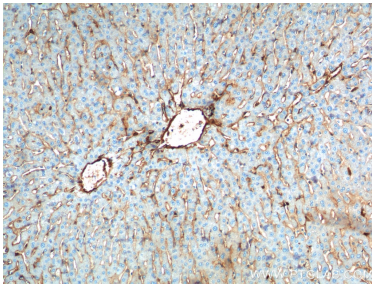
Various lysates were subjected to SDS PAGE followed by western blot with 11256-1-AP (Annexin A2 antibody) at dilution of 1:3000 incubated at room temperature for 1.5 hours.



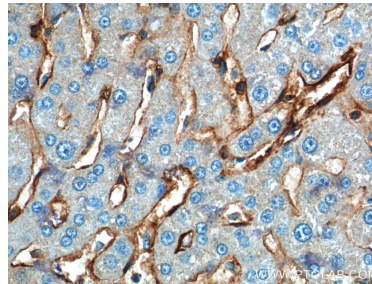
WB result of Annexin A2 (11256-1-AP, 1:1000) with si-Control and si-Annexin A2 transfected HEK293 cells.



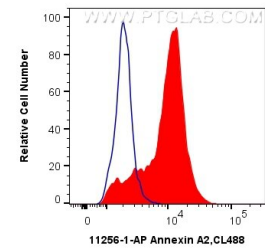
Various lysates were subjected to SDS PAGE followed by western blot with 11256-1-AP (Annexin A2 antibody) at dilution of 1:20000 incubated at room temperature for 1.5 hours.



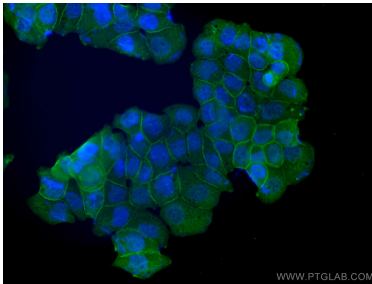
Immunohistochemical analysis of paraffin-embedded human liver tissue slide using 11256-1-AP (Annexin A2 Antibody) at dilution of 1:200 (under 10x lens).



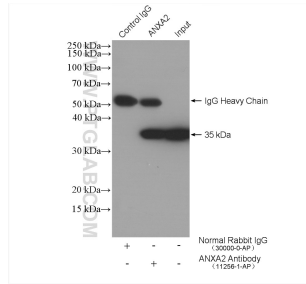
Immunohistochemical analysis of paraffin-embedded human liver tissue slide using 11256-1-AP (Annexin A2 Antibody) at dilution of 1:200 (under 40x lens).



1×10^6 K-562 cells were intracellularly stained with 0.4 ug Anti-Human Annexin A2 (11256-1-AP) and CoraLite®488-Conjugated AffiniPure Goat Anti-Rabbit IgG(H+L) at dilution 1:1000 (red), or 0.4 ug Control Antibody. Cells were fixed with 4% PFA and permeabilized with Flow Cytometry Perm Buffer (PF00011-C).



Immunofluorescent analysis of (4% PFA) fixed T-47D cells using Annexin A2 antibody (11256-1-AP) at dilution of 1:400 and CoraLite®488-Conjugated AffiniPure Goat Anti-Rabbit IgG(H+L).



IP result of anti-Annexin A2 (IP:11256-1-AP, 4ug; Detection:11256-1-AP 1:3000) with HeLa cells lysate 2640 ug.