

À des fins de recherche uniquement

Anticorps Polyclonal de lapin anti-ERK1/2



Numéro de catalogue: 11257-1-AP

Phare

183 Publications

Informations de base

Numéro de catalogue: 11257-1-AP	Numéro d'acquisition GenBank: BC013992	Méthode de purification: Purification par affinité contre l'antigène
Taille: 150ul , Concentration: 500 µg/ml by Nanodrop;	Identification du gène (NCBI): 5595	Dilutions recommandées: WB 1:2000-1:16000 IHC 1:100-1:400 IF 1:10-1:100
Hôte: Lapin	Nom complet: mitogen-activated protein kinase 3	
Isotype: IgG	MW calculé 43 kDa	
Immunogen Catalog Number: AG1759	MW observés: 38-44 kDa	

Applications

Applications testées:
FC, IF, IHC, WB, ELISA

Demandes citées:
IF, IHC, WB

Spécificité de l'espèce:
Humain, rat, souris

Espèces citées:
canin, Humain, porc, rat, souris

Remarque-IHC: il est suggéré de démasquer l'antigène avec un tampon de TE buffer pH 9,0; (*) À défaut, le démasquage de l'antigène peut être effectué avec un tampon citrate pH 6,0.

Contrôles positifs:

WB : cellules NIH/3T3, cellules C6, cellules HEK-293, cellules HeLa, cellules PC-12, tissu cérébral de souris, tissu pulmonaire de souris

IHC : tissu de cancer du côlon humain, tissu de cancer du sein humain

IF : cellules A375, cellules MCF-7

Informations générales

ERK1 and ERK2 belongs to the protein kinase superfamily. It is involved in both the initiation and regulation of meiosis, mitosis, and postmitotic functions in differentiated cells by phosphorylating a number of transcription factors such as ELK-1. ERK1/2 catalyzed the reaction: ATP + a protein = ADP + a phosphoprotein. It is activated by tyrosine phosphorylation in response to INS and NGF. This antibody can recognize both ERK1 and ERK2 with the molecular mass of 38-44 kDa.

Publications notables

Autrice	Pubmed ID	Journal	Application
Xiao-Feng Zhu	36180975	Phytother Res	WB
Hui Wang	36243659	Hepatobiliary Pancreat Dis Int	WB
Hongxia Li	34558311	Epigenomics	WB

Stockage

Stockage:

Stocker à -20°C. Stable pendant un an après l'expédition.

Tampon de stockage:

PBS avec azote de sodium à 0,02 % et glycérol à 50 % pH 7,3

L'aliquotage n'est pas nécessaire pour le stockage à -20C

*** Les 20ul contiennent 0,1% de BSA.

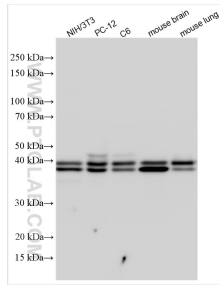
For technical support and original validation data for this product please contact:

T: 1 (888) 4PTGLAB (1-888-478-4522) (toll free in USA), or 1(312) 455-8498 (outside USA)

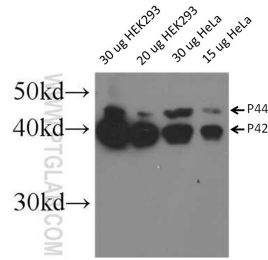
E: proteintech@ptglab.com
W: ptglab.com

This product is exclusively available under Proteintech Group brand and is not available to purchase from any other manufacturer.

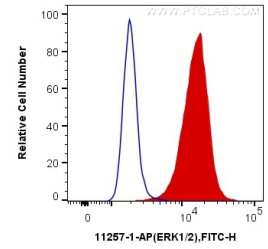
Données de validation sélectionnées



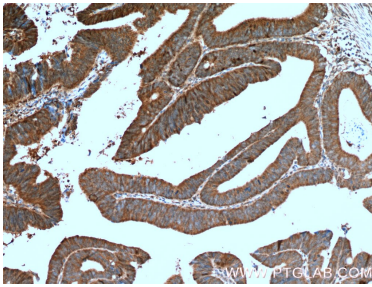
Various lysates were subjected to SDS PAGE followed by western blot with 11257-1-AP (ERK1/2 antibody) at dilution of 1:8000 incubated at room temperature for 1.5 hours.



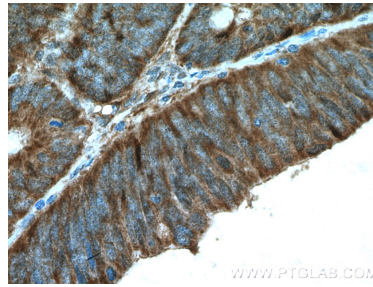
WB result of ERK1/2 antibody (11257-1-AP, 1:1000) with HeLa and HEK293 cells.



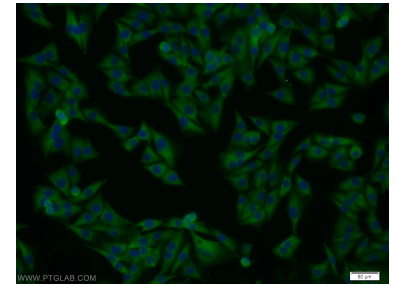
1×10^6 HeLa cells were intracellularly stained with 0.4 ug Anti-Human ERK1/2 (11257-1-AP) and CoraLite®488-Conjugated AffiniPure Goat Anti-Rabbit IgG(H+L) at dilution 1:1000 (red), or 0.4 ug Control Antibody. Cells were fixed with 4% PFA and permeabilized with Flow Cytometry Perm Buffer (PF00011-C).



Immunohistochemical analysis of paraffin-embedded human colon cancer tissue slide using 11257-1-AP (ERK1/2 Antibody) at dilution of 1:200 (under 10x lens). Heat mediated antigen retrieval with Tris-EDTA buffer (pH 9.0).



Immunohistochemical analysis of paraffin-embedded human colon cancer tissue slide using 11257-1-AP (ERK1/2 Antibody) at dilution of 1:200 (under 40x lens). Heat mediated antigen retrieval with Tris-EDTA buffer (pH 9.0).



Immunofluorescent analysis of A375 cells using 11257-1-AP (ERK1/2 antibody) at dilution of 1:25 and Alexa Fluor 488-conjugated AffiniPure Goat Anti-Rabbit IgG(H+L).