

À des fins de recherche uniquement

Anticorps Polyclonal de lapin anti-ATG12



Numéro de catalogue: 11264-1-AP

7 Publications

Informations de base

Numéro de catalogue: 11264-1-AP	Numéro d'acquisition GenBank: BC012266	Méthode de purification: Purification par affinité contre l'antigène
Taille: 150ul, Concentration: 400 µg/ml by Nanodrop and 193 µg/ml by Bradford method using BSA as the standard;	Identification du gène (NCBI): 9140	Dilutions recommandées: WB 1:500-1:1000 IHC 1:50-1:500 IF 1:10-1:100
Hôte: Lapin	Nom complet: ATG12 autophagy related 12 homolog (S. cerevisiae)	
Isotype: IgG	MW calculé: 15 kDa	
Immunogen Catalog Number: AG1791	MW observés: 48-55 kDa	

Applications

Applications testées:

IF, IHC, WB, ELISA

Demandes citées:

IF, IHC, WB

Spécificité de l'espèce:

Humain, rat, souris

Espèces citées:

Humain, rat, souris

Remarque-IHC: il est suggéré de démasquer l'antigène avec un tampon de TE buffer pH 9,0; (*) A défaut, le démasquage de l'antigène peut être effectué avec un tampon citrate pH 6,0.

Contrôles positifs:

WB : cellules PC-3, cellules COLO 320, cellules HCT 116, cellules HeLa, cellules NIH/3T3

IHC : tissu de cancer du côlon humain,

IF : cellules PC-3,

Informations générales

ATG12, also named as APG12 and APG12L, belongs to the ATG12 family. It is required for autophagy. Free ATG12 is 15kd or 8kd. Conjugated to ATG5, ATG12-ATG5 show 48-55kd.

Publications notables

Autrice	Pubmed ID	Journal	Application
Huangrong Zhu	36120586	Front Cell Dev Biol	WB,IF
Xinxin Si	36382664	Pharmacology	IHC
Jian-He Lu	34070854	Biology (Basel)	WB

Stockage

Stockage:

Stocker à -20°C. Stable pendant un an après l'expédition.

Tampon de stockage:

PBS avec azoture de sodium à 0,02 % et glycérol à 50 % pH 7,3

L'aliquotage n'est pas nécessaire pour le stockage à -20C

*** Les 20ul contiennent 0,1% de BSA.

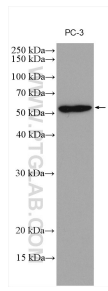
For technical support and original validation data for this product please contact:

T: 1 (888) 4PTGLAB (1-888-478-4522) (toll free in USA), or 1(312) 455-8498 (outside USA)

E: proteintech@ptglab.com
W: ptglab.com

This product is exclusively available under Proteintech Group brand and is not available to purchase from any other manufacturer.

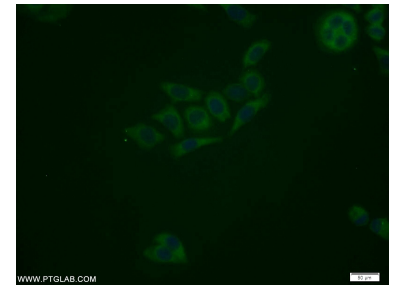
Données de validation sélectionnées



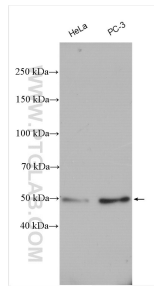
PC-3 cells were subjected to SDS PAGE followed by western blot with 11264-1-AP (ATG12 antibody) at dilution of 1:800 incubated at room temperature for 1.5 hours.



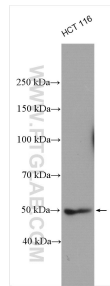
Immunohistochemical analysis of paraffin-embedded human colon cancer tissue slide using 11264-1-AP (ATG12 antibody) at dilution of 1:200 (under 10x lens). Heat mediated antigen retrieval with Tris-EDTA buffer (pH 9.0).



Immunofluorescent analysis of PC-3 cells using 11264-1-AP (ATG12 antibody) at dilution of 1:25 and Alexa Fluor 488-conjugated AffiniPure Goat Anti-Rabbit IgG(H+L).



Various lysates were subjected to SDS PAGE followed by western blot with 11264-1-AP (ATG12 antibody) at dilution of 1:3000 incubated at room temperature for 1.5 hours.



HCT 116 cells were subjected to SDS PAGE followed by western blot with 11264-1-AP (ATG12 antibody) at dilution of 1:3000 incubated at room temperature for 1.5 hours.