

À des fins de recherche uniquement

Anticorps Polyclonal de lapin anti-CD31



Numéro de catalogue: 11265-1-AP

Phare

243 Publications

Informations de base

Numéro de catalogue:

11265-1-AP

Taille:

150ul, Concentration: 600 µg/ml by Nanodrop;

Hôte:

Lapin

Isotype:

IgG

Immunogen Catalog Number:

AG1787

Numéro d'acquisition GenBank:

BC022512

Identification du gène (NCBI):

5175

Nom complet:

platelet/endothelial cell adhesion molecule

MW calculé

83 kDa

MW observés:

120-130 kDa

Méthode de purification:

Purification par affinité contre l'antigène

Dilutions recommandées:

WB 1:2000-1:10000

IP 0.5-4.0 ug for IP and 1:200-1:1000 for WB

IHC 1:2000-1:8000

IF 1:50-1:500

Applications

Applications testées:

FC, IF, IHC, IP, WB, ELISA

Demandes citées:

Cell treatment, FC, IF, IHC, IP, WB

Spécificité de l'espèce:

Humain

Espèces citées:

canin, Humain, porc, singe

Remarque-IHC: il est suggéré de démasquer l'antigène avec un tampon de TE buffer pH 9,0; (*) À défaut, le démasquage de l'antigène peut être effectué avec un tampon citrate pH 6,0.

Contrôles positifs:

WB : plaquettes de sang périphérique humain, cellules HUVEC, cellules Jurkat, cellules THP-1

IP : cellules Jurkat,

IHC : tissu de cancer du foie humain, tissu d'amygdalite humaine, tissu de carcinome à cellules rénales humaines, tissu de cirrhose hépatique humaine, tissu de gliome humain, tissu placentaire humain, tissu rénal humain

IF : tissu de cancer de l'endomètre humain, cellules HUVEC, tissu d'amygdalite humaine

Informations générales

Platelet endothelial cell adhesion molecule-1 (PECAM-1, CD31) is a member of the immunoglobulin gene superfamily of cell adhesion molecules. CD31 is a transmembrane glycoprotein that is highly expressed on the surface of the endothelium, making up a large portion of its intracellular junctions. PECAM-1 is also present on the surface of hematopoietic cells and immune cells including platelets, monocytes, neutrophils, natural killer cells, megakaryocytes and some types of T-cell (PMID: 9011572). As well as its role in cell-cell adhesion, PECAM-1 functions as a signaling receptor, and is involved in important physiological events such as nitric oxide production, regulation of T-cell immunity and tolerance, leukocyte transendothelial migration and inflammation and angiogenesis (PMID: 21183735; 20978210; 17872453; 20634489).

Publications notables

| Autrice | Pubmed ID | Journal | Application |
|----------------|-----------|-------------------------------|-------------|
| Qingrong Zhang | 34655915 | Colloids Surf B Biointerfaces | IHC |
| Zhou Yang | 32993738 | J Exp Clin Cancer Res | IHC |
| Haoyu Guo | 36201949 | Biomaterials | IF |

Stockage

Stockage:

Stocker à -20°C. Stable pendant un an après l'expédition.

Tampon de stockage:

PBS avec azotate de sodium à 0,02 % et glycérol à 50 % pH 7,3

L'aliquote n'est pas nécessaire pour le stockage à -20°C

*** Les 20ul contiennent 0,1% de BSA.

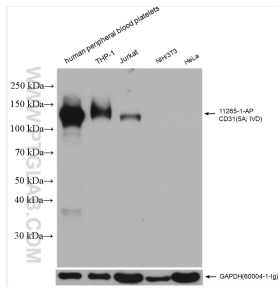
For technical support and original validation data for this product please contact:

T: 1 (888) 4PTGLAB (1-888-478-4522) (toll free in USA), or 1(312) 455-8498 (outside USA)

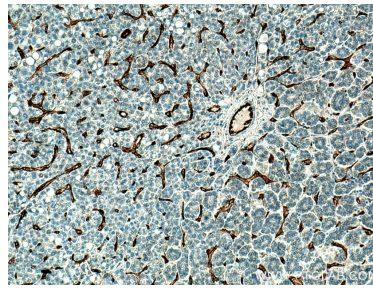
E: proteintech@ptglab.com
W: ptglab.com

This product is exclusively available under Proteintech Group brand and is not available to purchase from any other manufacturer.

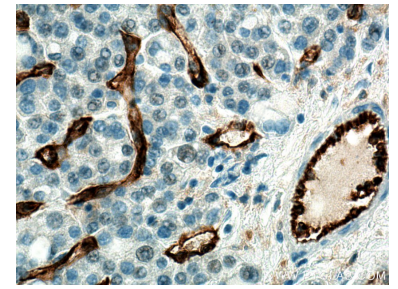
Données de validation sélectionnées



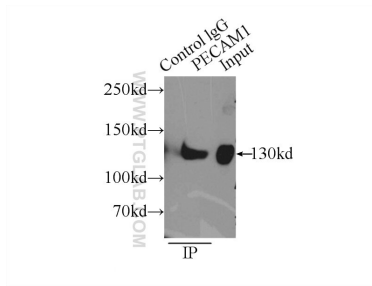
Various lysates were subjected to SDS PAGE followed by western blot with 11265-1-AP (CD31 antibody) at dilution of 1:5000 incubated at room temperature for 1.5 hours.



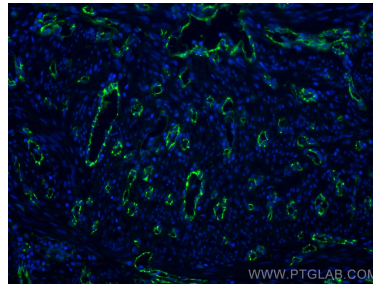
Immunohistochemical analysis of paraffin-embedded human liver cancer tissue slide using 11265-1-AP (CD31 antibody) at dilution of 1:4000 (under 10x lens). Heat mediated antigen retrieval with Tris-EDTA buffer (pH 9.0).



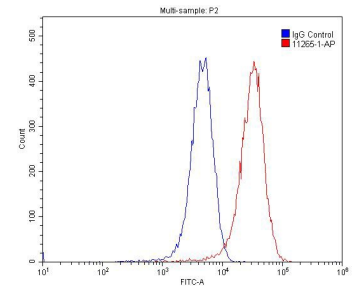
Immunohistochemical analysis of paraffin-embedded human liver cancer tissue slide using 11265-1-AP (CD31 antibody) at dilution of 1:4000 (under 40x lens). Heat mediated antigen retrieval with Tris-EDTA buffer (pH 9.0).



IP Result of anti-PECAM1, CD31 (IP: 11265-1-AP, 5ug; Detection: 11265-1-AP 1:300) with Jurkat cells lysate 4000ug.



Immunofluorescent analysis of (4% PFA) fixed human endometrial cancer tissue using CD31 antibody (11265-1-AP) at dilution of 1:200 and CoraLite@488-Conjugated AffiniPure Goat Anti-Rabbit IgG(H+L).



1x10⁶ HUVEC cells were stained with 0.2ug CD31 antibody (11265-1-AP, red) and control antibody (blue). Fixed with 4% PFA blocked with 3% BSA (30 min). Alexa Fluor 488-conjugated AffiniPure Goat Anti-Rabbit IgG(H+L) with dilution 1:1500.