

À des fins de recherche uniquement

Anticorps Polyclonal de lapin anti-CREB3



Numéro de catalogue: 11275-1-AP

Phare

14 Publications

Informations de base

Numéro de catalogue: 11275-1-AP	Numéro d'acquisition GenBank: BC009402	Méthode de purification: Purification par affinité contre l'antigène
Taille: 150ul , Concentration: 450 µg/ml by Nanodrop and 150 µg/ml by Bradford method using BSA as the standard;	Identification du gène (NCBI): 10488	Dilutions recommandées: WB 1:500-1:1000 IF 1:50-1:500
Hôte: Lapin	Nom complet: cAMP responsive element binding protein 3	
Isotype: IgG	MW calculé: 44 kDa	
Immunogen Catalog Number: AG1823	MW observés: 40-64 kDa	

Applications

Applications testées: IF, WB, ELISA	Contrôles positifs: WB : cellules Jurkat, cellules HeLa IF : cellules PC-3,
Demandes citées: ChIP, IF, IHC, IP, WB	
Spécificité de l'espèce: Humain	
Espèces citées: Humain, souris	

Informations générales

CREB3, also named as LZIP and Luman, belongs to the bZIP family and ATF subfamily. It is a transcription factors activated upon intramembrane proteolysis (RIP), binds the cAMP response element (CRE) (consensus: 5'-GTGACGT[AG][AG]-3'), a sequence present in many viral and cellular promoters. CREB3 binds to and requires HCFC1 as a coactivator. The activity and expression are suppressed when the HCFC1-CREB3 complex binds with CREBZF. Participates in LKN-1/CCL15-induced chemotaxis signaling. CREB3 is N-glycosylated and released by proteolysis. So the MW of CREB3 emirate 40kd to 64kd (PMID: 12138176).

Publications notables

Autrice	Pubmed ID	Journal	Application
Jenna Penney	30337854	Front Mol Neurosci	WB,IF,IP,ChIP
Ryoichi Murase	36152228	Mol Biol Rep	WB
Suhyun Kim	36057892	Cell Mol Life Sci	WB,IHC

Stockage

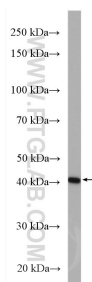
Stockage:
Stocker à -20°C. Stable pendant un an après l'expédition.
Tampon de stockage:
PBS avec azoture de sodium à 0,02 % et glycérol à 50 % pH 7,3
L'aliquotage n'est pas nécessaire pour le stockage à -20C

*** Les 20ul contiennent 0,1% de BSA.

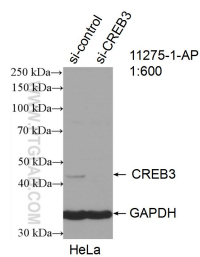
For technical support and original validation data for this product please contact:
T: 1 (888) 4PTGLAB (1-888-478-4522) (toll free in USA), or 1(312) 455-8498 (outside USA)
E: proteintech@ptglab.com
W: ptglab.com

This product is exclusively available under Proteintech Group brand and is not available to purchase from any other manufacturer.

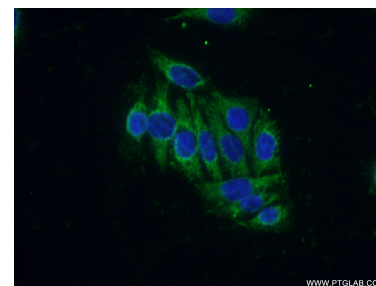
Données de validation sélectionnées



Jurkat cells were subjected to SDS PAGE followed by western blot with 11275-1-AP (CREB3 antibody) at dilution of 1:600 incubated at room temperature for 1.5 hours.



WB result of CREB3 antibody (11275-1-AP; 1:600; incubated at room temperature for 1.5 hours) with sh-Control and sh-CREB3 transfected HeLa cells.



Immunofluorescent analysis of (-20°C Ethanol) fixed PC-3 cells using 11275-1-AP (CREB3 antibody) at dilution of 1:50 and Alexa Fluor 488-conjugated AffiniPure Goat Anti-Rabbit IgG(H+L).