

À des fins de recherche uniquement

# Anticorps Polyclonal de lapin anti-PRMT1



Numéro de catalogue: 11279-1-AP

Phare

7 Publications

## Informations de base

Numéro de catalogue:

11279-1-AP

Taille:

150ul, Concentration: 300 µg/ml by Nanodrop;

Hôte:

Lapin

Isotype:

IgG

Immunogen Catalog Number:

AG1790

Numéro d'acquisition GenBank:

BC019268

Identification du gène (NCBI):

3276

Nom complet:

protein arginine methyltransferase 1

MW calculé

42 kDa

MW observés:

40-42 kDa

Méthode de purification:

Purification par affinité contre l'antigène

Dilutions recommandées:

WB 1:2000-1:16000

IP 0.5-4.0 ug for IP and 1:1000-1:8000 for WB

IHC 1:50-1:500

IF 1:50-1:500

## Applications

Applications testées:

FC, IF, IHC, IP, WB, ELISA

Demandes citées:

IF, IHC, IP, WB

Spécificité de l'espèce:

Humain, rat, souris

Espèces citées:

Humain, souris

Contrôles positifs:

WB : cellules A549, cellules HeLa, cellules Jurkat, cellules MCF-7, cellules NIH/3T3, tissu cérébral de rat, tissu cérébral de souris

IP : cellules A549,

IHC : tissu de côlon humain,

IF : cellules A431,

**Remarque-IHC: il est suggéré de démasquer l'antigène avec un tampon de TE buffer pH 9,0; (\*) À défaut, le démasquage de l'antigène peut être effectué avec un tampon citrate pH 6,0.**

## Informations générales

PRMT1, the major protein arginine methyltransferase in mammals, catalyzes monomethylation and asymmetric dimethylation of arginine side chains in proteins. Human PRMT1 is encoded by the PRMT1 gene located on chromosome 19 (19q13.3) and composed of 12 exons and 11 introns. At the protein level, human PRMT1 shares a high degree of homology with the different members of the PRMT family that is conserved in eukaryotes. Phylogenetic studies based on the methyltransferase domain highlighted that PRMT1 is closely related to PRMT8.

## Publications notables

Autrice	Pubmed ID	Journal	Application
Zhongwei Li	34775498	Cell Death Dis	WB,IHC
Xin-Ke Yin	33420374	Oncogene	IHC
Yizhen Tian	34919946	Toxicol Appl Pharmacol	WB

## Stockage

Stockage:

Stocker à -20°C. Stable pendant un an après l'expédition.

Tampon de stockage:

PBS avec azoture de sodium à 0,02 % et glycérol à 50 % pH 7,3

L'aliquotage n'est pas nécessaire pour le stockage à -20C

**\*\*\* Les 20ul contiennent 0,1% de BSA.**

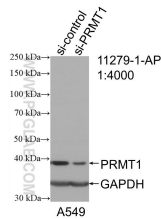
For technical support and original validation data for this product please contact:

T: 1 (888) 4PTGLAB (1-888-478-4522) (toll free in USA), or 1(312) 455-8498 (outside USA)

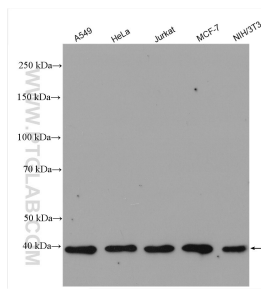
E: proteintech@ptglab.com  
W: ptglab.com

**This product is exclusively available under Proteintech Group brand and is not available to purchase from any other manufacturer.**

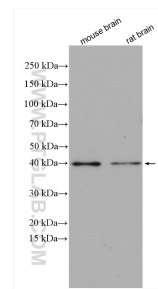
## Données de validation sélectionnées



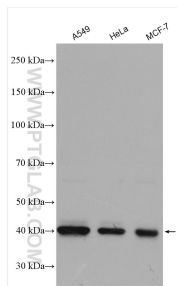
WB result of PRMT1 antibody (11279-1-AP; 1:4000; incubated at room temperature for 1.5 hours) with sh-Control and sh-PRMT1 transfected A549 cells.



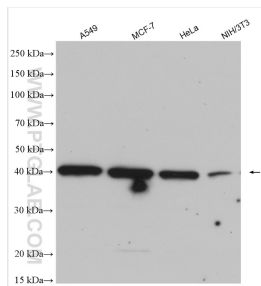
Various lysates were subjected to SDS PAGE followed by western blot with 11279-1-AP (PRMT1 antibody) at dilution of 1:8000 incubated at room temperature for 1.5 hours.



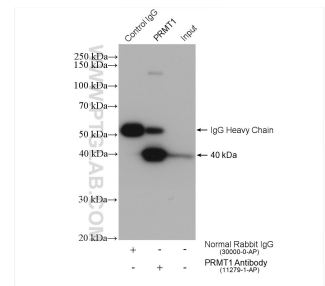
Various lysates were subjected to SDS PAGE followed by western blot with 11279-1-AP (PRMT1 antibody) at dilution of 1:10000 incubated at room temperature for 1.5 hours.



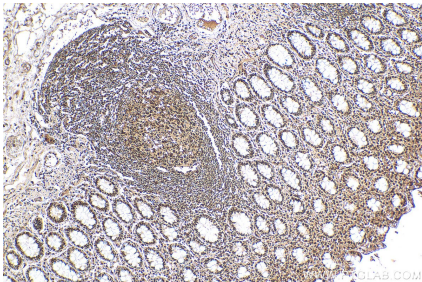
Various lysates were subjected to SDS PAGE followed by western blot with 11279-1-AP (PRMT1 antibody) at dilution of 1:6000 incubated at room temperature for 1.5 hours.



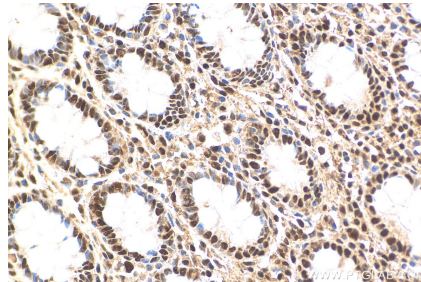
Various lysates were subjected to SDS PAGE followed by western blot with 11279-1-AP (PRMT1 antibody) at dilution of 1:6000 incubated at room temperature for 1.5 hours.



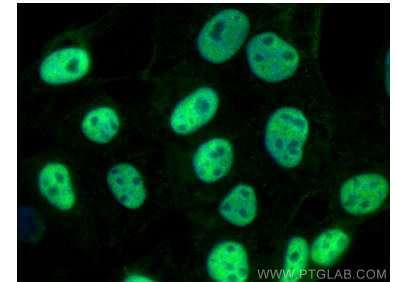
IP result of anti-PRMT1 (IP:11279-1-AP, 4ug; Detection:11279-1-AP 1:4000) with A549 cells lysate 960 ug.



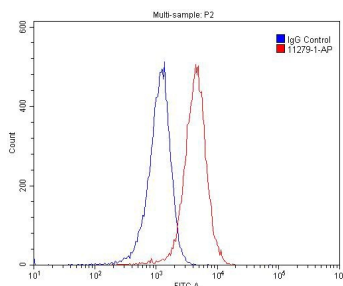
Immunohistochemical analysis of paraffin-embedded human colon tissue slide using 11279-1-AP (PRMT1 antibody) at dilution of 1:200 (under 10x lens). Heat mediated antigen retrieval with Tris-EDTA buffer (pH 9.0).



Immunohistochemical analysis of paraffin-embedded human colon tissue slide using 11279-1-AP (PRMT1 antibody) at dilution of 1:200 (under 40x lens). Heat mediated antigen retrieval with Tris-EDTA buffer (pH 9.0).



Immunofluorescent analysis of (4% PFA) fixed A431 cells using PRMT1 antibody (11279-1-AP) at dilution of 1:200 and CoraLite@488-Conjugated AffiniPure Goat Anti-Rabbit IgG(H+L).



1X10<sup>6</sup> Raji cells were stained with 0.2ug PRMT1 antibody (11279-1-AP, red) and control antibody (blue). Cells were fixed with 4% PFA and permeabilized with 0.1% Triton X-100. Alexa Fluor 488-conjugated AffiniPure Goat Anti-Rabbit IgG(H+L) with dilution 1:1500.