

À des fins de recherche uniquement

Anticorps Polyclonal de lapin anti-P2RY6



Numéro de catalogue: 11300-1-AP

2 Publications

Informations de base

Numéro de catalogue:
11300-1-AP

Taille:
150ul , Concentration: 133 µg/ml by
Bradford method using BSA as the
standard;

Hôte:
Lapin

Isotype:
IgG

Immunogen Catalog Number:
AG1820

Numéro d'acquisition GenBank:
BC009391

Identification du gène (NCBI):
5031

Nom complet:
pyrimidinergic receptor P2Y, G-
protein coupled, 6

MW calculé
36 kDa

MW observés:
45 kDa

Méthode de purification:
Purification par affinité contre
l'antigène

Dilutions recommandées:
WB 1:500-1:2000

Applications

Applications testées:
WB, ELISA

Demandes citées:
WB

Spécificité de l'espèce:
Humain, rat, souris

Espèces citées:
Humain

Contrôles positifs:

WB : cellules A549,

Informations générales

Nucleotides, the structural subunits of the nucleic acids, are also important extracellular signaling molecules. P2 receptors are a family of cell surface receptors that mediate a wide variety of physiologic effects in response to extracellular nucleotides. These receptors fall into two classes: P2X receptors, which are ligand-gated ion channels that mediate calcium and potassium fluxes in response to ATP, and P2Y receptors, which are G protein-coupled receptors (GPCRs). P2RY6 is responsive to UDP, partially responsive to UTP and ADP, and not responsive to ATP. The activity of this receptor is mediated by G proteins which activate a phosphatidylinositol-calcium second messenger system. (PMID: 8670200; 21724990)

Publications notables

Autrice	Pubmed ID	Journal	Application
Erina Takai	21388279	Radiat Res	WB
Takai Erina E	21189077	Radiat Res	WB

Stockage

Stockage:

Stocker à -20°C. Stable pendant un an après l'expédition.

Tampon de stockage:

PBS avec azoture de sodium à 0,02 % et glycérol à 50 % pH 7,3

L'aliqotage n'est pas nécessaire pour le stockage à -20C

*** Les 20ul contiennent 0,1% de BSA.

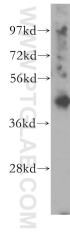
For technical support and original validation data for this product please contact:

T: 1 (888) 4PTGLAB (1-888-478-4522) (toll free
in USA), or 1(312) 455-8498 (outside USA)

E: proteintech@ptglab.com
W: ptglab.com

This product is exclusively available under Proteintech Group brand and is not available to purchase from any other manufacturer.

Données de validation sélectionnées



A549 cells were subjected to SDS PAGE followed by western blot with 11300-1-AP (P2RY6 antibody) at dilution of 1:300 incubated at room temperature for 1.5 hours.