

À des fins de recherche uniquement

Anticorps Polyclonal de lapin anti-Ribosomal protein L4



Numéro de catalogue: 11302-1-AP

Phare

30 Publications

Informations de base

Numéro de catalogue:
11302-1-AP

Taille:
150ul, Concentration: 900 µg/ml by
Nanodrop;

Hôte:
Lapin

Isotype:
IgG

Immunogen Catalog Number:
AG1828

Numéro d'acquisition GenBank:
BC009888

Identification du gène (NCBI):
6124

Nom complet:
ribosomal protein L4

MW calculé
48 kDa

MW observés:
48 kDa

Méthode de purification:
Purification par affinité contre
l'antigène

Dilutions recommandées:
WB 1:2000-1:10000
IP 0.5-4.0 ug for IP and 1:500-1:1000
for WB
IHC 1:50-1:500
IF 1:20-1:200

Applications

Applications testées:
FC, IF, IHC, IP, WB, ELISA

Demandes citées:
FC, IF, IP, RIP, WB

Spécificité de l'espèce:
Humain, rat, souris

Espèces citées:
Humain, riz, souris, arabidopsis

Remarque-IHC: il est suggéré de démasquer l'antigène avec un tampon de TE buffer pH 9,0; (*) À défaut, le démasquage de l'antigène peut être effectué avec un tampon citrate pH 6,0.

Contrôles positifs:

WB : cellules HeLa, cellules HepG2, cellules MCF-7, tissu de muscle squelettique de rat

IP : cellules K-562,

IHC : tissu de lymphome humain,

IF : cellules HepG2,

Informations générales

60S ribosomal protein L4 is encoded by RPL4 (or RPL1) gene. RPL4 is a component of 60S subunit of ribosome, and belongs to the L4E family. By interacting with c-Myb, RPL4 plays a important role in c-myc expression in response to growth factor and nutritional signals. Recently RPL4 was reported to be able to increase efficiency of viral recoding sequence.

Publications notables

Autrice	Pubmed ID	Journal	Application
Bartoli Kristen M KM	21795388	Mol Biol Cell	WB
Zekun Wang	34653226	PLoS Pathog	WB
Annie Hien	33054857	Mol Autism	WB

Stockage

Stockage:

Stocker à -20°C. Stable pendant un an après l'expédition.

Tampon de stockage:

PBS avec azoture de sodium à 0,02 % et glycérol à 50 % pH 7,3

L'aliquotage n'est pas nécessaire pour le stockage à -20C

*** Les 20ul contiennent 0,1% de BSA.

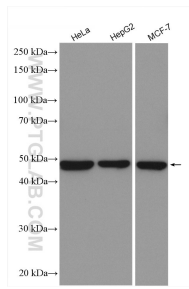
For technical support and original validation data for this product please contact:

T: 1 (888) 4PTGLAB (1-888-478-4522) (toll free in USA), or 1(312) 455-8498 (outside USA)

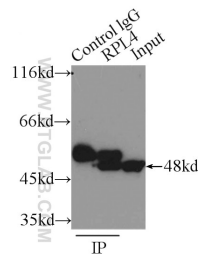
E: proteintech@ptglab.com
W: ptglab.com

This product is exclusively available under Proteintech Group brand and is not available to purchase from any other manufacturer.

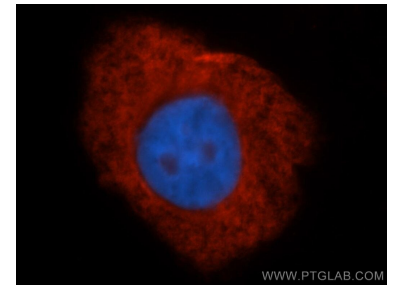
Données de validation sélectionnées



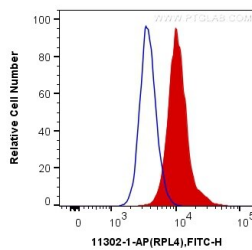
Various lysates were subjected to SDS PAGE followed by western blot with 11302-1-AP (Ribosomal protein L4 antibody) at dilution of 1:5000 incubated at room temperature for 1.5 hours.



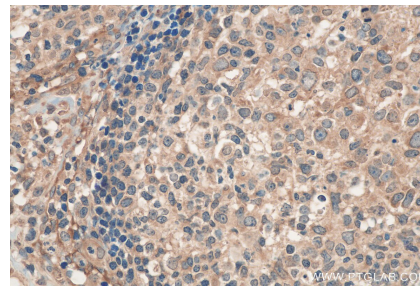
IP Result of anti-ribosomal protein L4 (IP:11302-1-AP, 3ug; Detection:11302-1-AP 1:800) with K-562 cells lysate 6000ug.



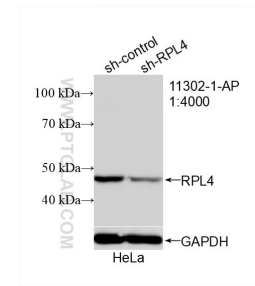
Immunofluorescent analysis of HepG2 cells using Ribosomal protein L4 antibody (11302-1-AP) at dilution of 1:50 and Rhodamine-Goat anti-Rabbit IgG.



1X10⁶ HeLa cells were intracellularly stained with 0.2 ug Anti-Human Ribosomal protein L4 (11302-1-AP) and CoraLite®488-Conjugated AffiniPure Goat Anti-Rabbit IgG(H+L) at dilution 1:1000 (red), or 0.2 ug Control Antibody. Cells were fixed with 4% PFA and permeabilized with Flow Cytometry Perm Buffer (PF00011-C).



Immunohistochemical analysis of paraffin-embedded human lymphoma tissue slide using 11302-1-AP (Ribosomal protein L4 antibody) at dilution of 1:200 (under 40x lens). Heat mediated antigen retrieval with Tris-EDTA buffer (pH 9.0).



WB result of Ribosomal protein L4 antibody (11302-1-AP; 1:4000; incubated at room temperature for 1.5 hours) with sh-Control and sh-Ribosomal protein L4 transfected HeLa cells.