

À des fins de recherche uniquement

Anticorps Polyclonal de lapin anti-SERPINE2



Numéro de catalogue: 11303-1-AP

Phare

8 Publications

Informations de base

Numéro de catalogue:

11303-1-AP

Taille:

150ul, Concentration: 450 µg/ml by Nanodrop;

Hôte:

Lapin

Isotype:

IgG

Immunogen Catalog Number:

AG1830

Numéro d'acquisition GenBank:

BC015663

Identification du gène (NCBI):

5270

Nom complet:

serpin peptidase inhibitor, clade E (nexin, plasminogen activator inhibitor type 1), member 2

MW calculé

44 kDa

MW observés:

44-50 kDa

Méthode de purification:

Purification par affinité contre l'antigène

Dilutions recommandées:

WB 1:500-1:1000

IP 0.5-4.0 ug for IP and 1:200-1:1000 for WB

IHC 1:20-1:200

IF 1:50-1:500

Applications

Applications testées:

IF, IHC, IP, WB, ELISA

Demandes citées:

IF, IHC, IP, WB

Spécificité de l'espèce:

Humain, rat, souris

Espèces citées:

Humain, rat, souris

Remarque-IHC: il est suggéré de démasquer l'antigène avec un tampon de TE buffer pH 9,0; (*) A défaut, 'le démasquage de l'antigène peut être 'effectué avec un tampon citrate pH 6,0.

Contrôles positifs:

WB : cellules C6, cellules A549, cellules MCF-7, tissu cardiaque de rat, tissu cérébral de rat

IP : cellules A549,

IHC : tissu testiculaire humain, tissu de cancer du pancréas humain

IF : tissu testiculaire humain,

Informations générales

SERPINE2 also called protease nexin-1 or glial-derived neurite promoting factor, is a member of the serine protease inhibitor (SERPIN) superfamily. It would be a potent inhibitor of the urokinase-plasminogen activator (uPA), tissue-type PA (tPA), thrombin, trypsin, factor Xia, and prostasin. SERPINE2 is widely expressed in various tissues, including endothelial cells, fibroblasts, smooth muscle cells, tumor cells, glial cells, neurons, and placental cells.

Publications notables

Autrice	Pubmed ID	Journal	Application
Wei Cai	36170234	Autophagy	IP
Jingjing Zhang	34648881	Cancer Lett	WB,IHC,IP
Mary Ann Stepp	30446696	Sci Rep	IF

Stockage

Stockage:

Stocker à -20°C. Stable pendant un an après l'expédition.

Tampon de stockage:

PBS avec azoture de sodium à 0,02 % et glycérol à 50 % pH 7,3

L'aliquotage n'est pas nécessaire pour le stockage à -20C

***** Les 20ul contiennent 0,1% de BSA.**

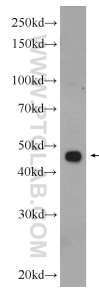
For technical support and original validation data for this product please contact:

T: 1 (888) 4PTGLAB (1-888-478-4522) (toll free in USA), or 1(312) 455-8498 (outside USA)

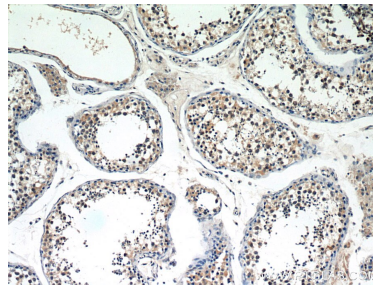
E: proteintech@ptglab.com
W: ptglab.com

This product is exclusively available under Proteintech Group brand and is not available to purchase from any other manufacturer.

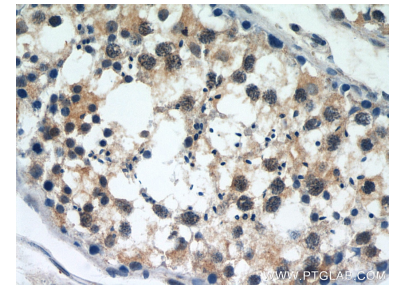
Données de validation sélectionnées



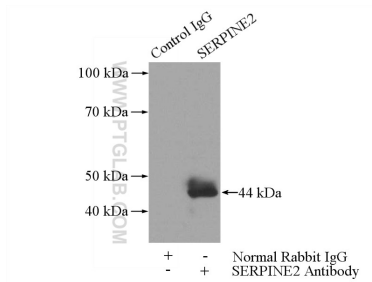
C6 cells were subjected to SDS PAGE followed by western blot with 11303-1-AP (SERPINE2 Antibody) at dilution of 1:600 incubated at room temperature for 1.5 hours.



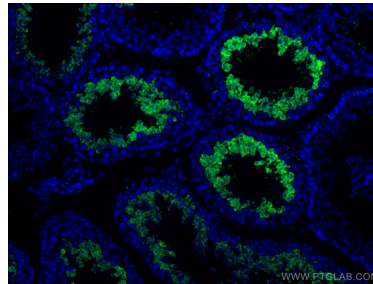
Immunohistochemical analysis of paraffin-embedded human testis slide using 11303-1-AP (SERPINE2 Antibody) at dilution of 1:50.



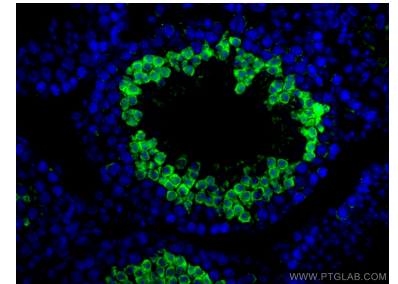
Immunohistochemical analysis of paraffin-embedded human testis slide using 11303-1-AP (SERPINE2 Antibody) at dilution of 1:50.



IP Result of anti-SERPINE2 (IP:11303-1-AP, 3ug; Detection:11303-1-AP 1:300) with A549 cells lysate 2800ug.



Immunofluorescent analysis of (4% PFA) fixed human testis tissue using SERPINE2 antibody (11303-1-AP) at dilution of 1:200 and CoraLite@488-Conjugated AffiniPure Goat Anti-Rabbit IgG(H+L).



Immunofluorescent analysis of (4% PFA) fixed human testis tissue using SERPINE2 antibody (11303-1-AP) at dilution of 1:200 and CoraLite@488-Conjugated AffiniPure Goat Anti-Rabbit IgG(H+L).