

À des fins de recherche uniquement

# Anticorps Polyclonal de lapin anti-EIF3H



Numéro de catalogue: 11310-1-AP

Phare

5 Publications

## Informations de base

Numéro de catalogue:

11310-1-AP

Numéro d'acquisition GenBank:

BC000386

Méthode de purification:

Purification par affinité contre l'antigène

Taille:

150ul, Concentration: 550 µg/ml by Nanodrop and 267 µg/ml by Bradford method using BSA as the standard;

Identification du gène (NCBI):

8667

Dilutions recommandées:

WB 1:500-1:3000

Hôte:

Lapin

Nom complet:

eukaryotic translation initiation factor 3, subunit H

MW calculé

Isotype:

IgG

40 kDa

MW observés:

40 kDa

Immunogen Catalog Number:

AG1850

## Applications

Applications testées:

WB, ELISA

Contrôles positifs:

WB: cellules HeLa, cellules NIH/3T3, cellules PC-12

Demandes citées:

IF, IP, WB

Spécificité de l'espèce:

Humain, souris

Espèces citées:

Humain

## Informations générales

Eukaryotic translation initiation factor eIF3, that plays a central role in translation initiation, consists of five core subunits that are present in both the budding yeast and higher eukaryotes. The EIF-3 complex associates with the 40S ribosome and facilitates the recruitment of eIF-1, eIF-1A, eIF-2:GTP:methionyl-tRNA<sup>i</sup> and eIF-5 to form the 43S preinitiation complex. The complex stimulates mRNA recruitment to the 43S PIC and scanning of the mRNA for AUG recognition. It is also required for disassembly and recycling of post-termination ribosomal complexes and subsequently prevents premature joining of the 40S and 60S ribosomal subunits prior to initiation. EIF3H is a component of the EIF3 complex. [PMID:19204574,20503360]

## Publications notables

Autrice	Pubmed ID	Journal	Application
Yuanpei Li	36289222	Nat Commun	WB
Genhua Yu	30022709	Biosci Biotechnol Biochem	WB
Mengqi Chu	33509274	Stem Cell Res Ther	WB

## Stockage

Stockage:

Stocker à -20°C. Stable pendant un an après l'expédition.

Tampon de stockage:

PBS avec azoture de sodium à 0,02 % et glycérol à 50 % pH 7,3

L'aliquotage n'est pas nécessaire pour le stockage à -20C

\*\*\* Les 20ul contiennent 0,1% de BSA.

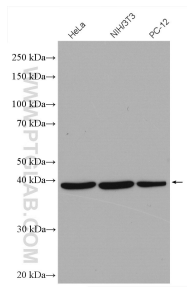
For technical support and original validation data for this product please contact:

T: 1 (888) 4PTGLAB (1-888-478-4522) (toll free in USA), or 1(312) 455-8498 (outside USA)

E: [proteintech@ptglab.com](mailto:proteintech@ptglab.com)  
W: [ptglab.com](http://ptglab.com)

This product is exclusively available under Proteintech Group brand and is not available to purchase from any other manufacturer.

## Données de validation sélectionnées



Various lysates were subjected to SDS PAGE followed by western blot with 11310-1-AP (EIF3H antibody) at dilution of 1:1500 incubated at room temperature for 1.5 hours.