

À des fins de recherche uniquement

Anticorps Polyclonal de lapin anti-RAB35



Numéro de catalogue: 11329-2-AP

Phare

39 Publications

Informations de base

Numéro de catalogue:

11329-2-AP

Taille:

150ul, Concentration: 700 µg/ml by Nanodrop;

Hôte:

Lapin

Isotype:

IgG

Immunogen Catalog Number:

AG1872

Numéro d'acquisition GenBank:

BC015931

Identification du gène (NCBI):

11021

Nom complet:

RAB35, member RAS oncogene family

MW calculé

201 aa, 23 kDa

MW observés:

23 kDa

Méthode de purification:

Purification par affinité contre l'antigène

Dilutions recommandées:

WB 1:1000-1:6000

IP 0.5-4.0 ug for IP and 1:500-1:1000 for WB

IHC 1:50-1:500

Applications

Applications testées:

IHC, IP, WB, ELISA

Demandes citées:

CoIP, IF, IHC, IP, WB

Spécificité de l'espèce:

Humain, rat, souris

Espèces citées:

canin, Humain, porc, rat, souris

Contrôles positifs:

WB : cellules A431, cellules A375, cellules HeLa, cellules MCF-7, cellules RAW 264.7, tissu cérébral de rat, tissu cérébral de souris, tissu cérébral humain

IP : tissu cérébral de souris,

IHC : tissu de cancer du sein humain, tissu cérébral humain, tissu hépatique humain

Remarque-IHC: il est suggéré de démasquer l'antigène avec un tampon de TE buffer pH 9,0; (*) À défaut, le démasquage de l'antigène peut être effectué avec un tampon citrate pH 6,0.

Informations générales

RAB35 is a member of the small GTPase superfamily. Like the other Rab proteins, RAB35 has 2 consecutive cysteine residues at its C terminus, and this region is thought to be involved in membrane association. Rab35 is found on the cell surface and endosomes, where it has been proposed to play a role in recycling of the transferrin and other receptors.

Publications notables

Autrice	Pubmed ID	Journal	Application
Akane Imai	21832089	J Biol Chem	WB
Sara R Guerreiro	36056171	Mol Psychiatry	WB
Elisabetta Argenzio	25344254	J Cell Sci	WB

Stockage

Stockage:

Stocker à -20°C. Stable pendant un an après l'expédition.

Tampon de stockage:

PBS avec azoture de sodium à 0,02 % et glycérol à 50 % pH 7,3

L'aliquotage n'est pas nécessaire pour le stockage à -20C

*** Les 20ul contiennent 0,1% de BSA.

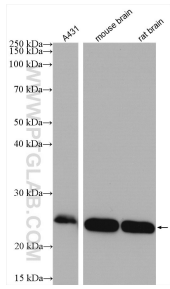
For technical support and original validation data for this product please contact:

T: 1 (888) 4PTGLAB (1-888-478-4522) (toll free in USA), or 1(312) 455-8498 (outside USA)

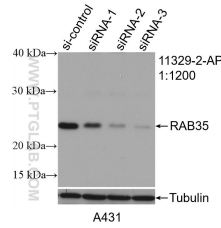
E: proteintech@ptglab.com
W: ptglab.com

This product is exclusively available under Proteintech Group brand and is not available to purchase from any other manufacturer.

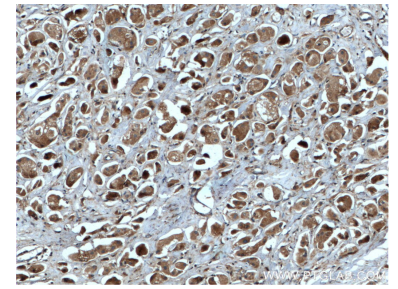
Données de validation sélectionnées



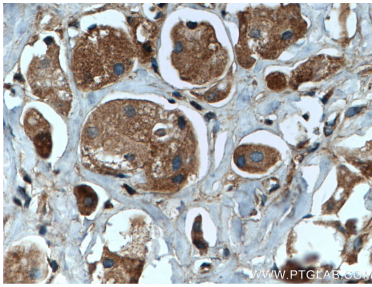
Various lysates were subjected to SDS PAGE followed by western blot with 11329-2-AP (RAB35 antibody) at dilution of 1:3000 incubated at room temperature for 1.5 hours.



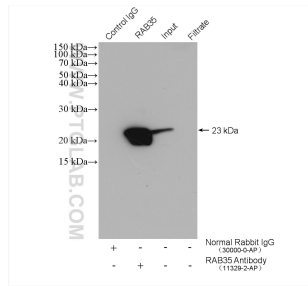
WB result of RAB35 antibody (11329-2-AP; 1:1200; incubated at room temperature for 1.5 hours) with sh-Control and sh-RAB35 transfected A431 cells.



Immunohistochemical analysis of paraffin-embedded human breast cancer tissue slide using 11329-2-AP (RAB35 antibody) at dilution of 1:200 (under 10x lens. Heat mediated antigen retrieval with Tris-EDTA buffer (pH 9.0).



Immunohistochemical analysis of paraffin-embedded human breast cancer tissue slide using 11329-2-AP (RAB35 antibody) at dilution of 1:200 (under 40x lens. Heat mediated antigen retrieval with Tris-EDTA buffer (pH 9.0).



IP result of anti-RAB35 (IP:11329-2-AP, 4ug; Detection:11329-2-AP 1:600) with mouse brain tissue lysate 2400 ug.