

À des fins de recherche uniquement

Anticorps Polyclonal de lapin anti-DNASE1L3



Numéro de catalogue: 11330-1-AP

Informations de base

Numéro de catalogue: 11330-1-AP	Numéro d'acquisition GenBank: BC015831	Méthode de purification: Purification par affinité contre l'antigène
Taille: 150ul , Concentration: 400 µg/ml by Nanodrop and 267 µg/ml by Bradford method using BSA as the standard;	Identification du gène (NCBI): 1776	Dilutions recommandées: WB 1:200-1:600
Hôte: Lapin	Nom complet: deoxyribonuclease I-like 3	
Isotype: IgG	MW calculé: 305 aa, 36 kDa	
Immunogen Catalog Number: AG1873	MW observés: 33-38 kDa	

Applications

Applications testées: WB, ELISA	Contrôles positifs: WB : cellules HEK-293, cellules Raji
Spécificité de l'espèce: Humain	

Informations générales

Deoxyribonuclease 1-like 3 (DNASE1L3, DNase gamma, DNase Y, LS-DNase) is member of a DNASE1 protein family that is identified by similar biochemical properties such as Ca²⁺/Mg²⁺ dependency and an optimal pH of about 7.0 as well as by a high similarity in their nucleic acid and amino acid sequences [PMID:15796714]. It is an endonuclease and cleaves double-stranded DNA (and single-stranded DNA) producing 3'-OH/5'-P ends, which is Ca²⁺/Mg²⁺-dependent and inhibited by Zn²⁺, but not by monomeric actin [PMID:9665719]. In addition, it has been suggested to be involved in apoptotic DNA fragmentation of thymocytes neuronal PC12 cells, C2C12 myoblasts and of cell lines expressing the recombinant nuclease [PMID: 7957253, 9307016]

Stockage

Stockage:
Stocker à -20°C. Stable pendant un an après l'expédition.
Tampon de stockage:
PBS avec azoture de sodium à 0,02 % et glycérol à 50 % pH 7,3
L'aliquotage n'est pas nécessaire pour le stockage à -20C

***** Les 20ul contiennent 0,1% de BSA.**

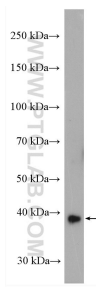
For technical support and original validation data for this product please contact:

T: 1 (888) 4PTGLAB (1-888-478-4522) (toll free in USA), or 1(312) 455-8498 (outside USA)

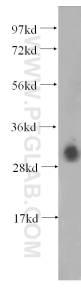
E: proteintech@ptglab.com
W: ptglab.com

This product is exclusively available under Proteintech Group brand and is not available to purchase from any other manufacturer.

Données de validation sélectionnées



Raji cells were subjected to SDS PAGE followed by western blot with 11330-1-AP (DNASE1L3 antibody) at dilution of 1:600 incubated at room temperature for 1.5 hours.



HEK-293 cells were subjected to SDS PAGE followed by western blot with 11330-1-AP (DNASE1L3 antibody) at dilution of 1:600 incubated at room temperature for 1.5 hours.