

À des fins de recherche uniquement

Anticorps Polyclonal de lapin anti-PTP1B



Numéro de catalogue: 11334-1-AP

Phare

26 Publications

Informations de base

Numéro de catalogue:
11334-1-AP

Taille:
150ul, Concentration: 1000 µg/ml by Nanodrop and 400 µg/ml by Bradford method using BSA as the standard;

Hôte:
Lapin

Isotype:
IgG

Immunogen Catalog Number:
AG1878

Numéro d'acquisition GenBank:
BC015660

Identification du gène (NCBI):

Nom complet:
protein tyrosine phosphatase, non-receptor type 1

MW calculé
435 aa, 50 kDa

MW observés:
45-55 kDa

Méthode de purification:

Purification par affinité contre l'antigène

Dilutions recommandées:

WB 1:2000-1:10000
IP 0.5-4.0 ug for IP and 1:500-1:1000 for WB
IHC 1:20-1:200
IF 1:10-1:100

Applications

Applications testées:

IF, IHC, IP, WB, ELISA

Demandes citées:

CoIP, IF, IHC, IP, WB

Spécificité de l'espèce:

Humain, rat, souris

Espèces citées:

Humain, rat, souris

Remarque-IHC: il est suggéré de démasquer l'antigène avec un tampon de TE buffer pH 9,0; (*) À défaut, 'le démasquage de l'antigène peut être 'effectué avec un tampon citrate pH 6,0.

Contrôles positifs:

WB : cellules Sp2/0, cellules A431, cellules BxPC-3, cellules C6, cellules HeLa, cellules HL-60, cellules Jurkat, cellules NIH/3T3, cellules THP-1, tissu hépatique de rat, tissu hépatique de souris, tissu placentaire de souris, tissu placentaire humain, tissu testiculaire humain

IP : cellules A431,

IHC : tissu de cancer de la prostate humain,

IF : cellules BxPC-3,

Informations générales

PTPN1 (protein tyrosine phosphatase, non-receptor type 1) is also named as PTP1B or PTP-1B, and belongs to the protein-tyrosine phosphatase family and non-receptor class 1 subfamily. PTPN1 is involved in the regulation of several important physiological pathways, which regulates both INS and leptin signaling, and interacts with the epidermal and platelet-derived growth factor receptors (PMID: 20101100). The gene might harbor variants influencing susceptibility to INS resistance and type 2 diabetes (PMID:15919813). The molecular mass of PTPN1 is 50 kDa, but sometimes some truncated forms can be detected as 48, 46, 39, 37 kDa due to non-specific proteolytic cleavage of PTP1B in different cells (PMID: 18253097).

Publications notables

Autrice	Pubmed ID	Journal	Application
Shohei Takaoka	34646989	iScience	WB
Jianzhi Wu	34566665	Front Pharmacol	WB
Lei Yang	31711802	Toxicol Lett	WB

Stockage

Stockage:

Stocker à -20°C. Stable pendant un an après l'expédition.

Tampon de stockage:

PBS avec azoture de sodium à 0,02 % et glycérol à 50 % pH 7,3

L'aliquotage n'est pas nécessaire pour le stockage à -20C

*** Les 20ul contiennent 0,1% de BSA.

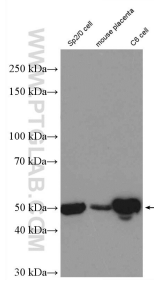
For technical support and original validation data for this product please contact:

T: 1 (888) 4PTGLAB (1-888-478-4522) (toll free in USA), or 1(312) 455-8498 (outside USA)

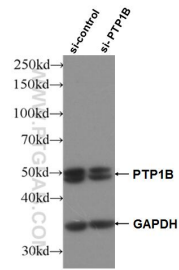
E: proteintech@ptglab.com
W: ptglab.com

This product is exclusively available under Proteintech Group brand and is not available to purchase from any other manufacturer.

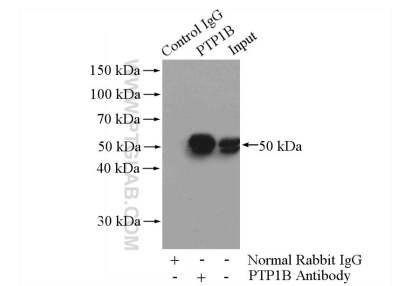
Données de validation sélectionnées



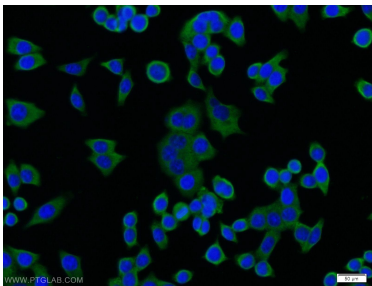
Sp2/0 cells were subjected to SDS PAGE followed by western blot with 11334-1-AP (PTP1B antibody) at dilution of 1:5000 incubated at room temperature for 1.5 hours.



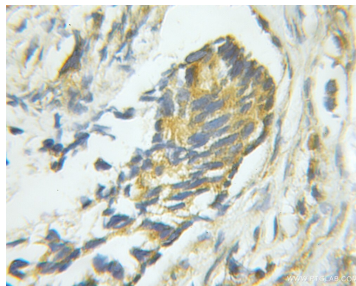
WB result of PTP1B antibody (11334-1-AP; 1:30000; incubated at room temperature for 1.5 hours) with sh-Control and sh-PTP1B transfected Jurkat cells.



IP Result of anti-PTP1B (IP:11334-1-AP, 4ug; Detection:11334-1-AP 1:500) with A431 cells lysate 2400ug.



Immunofluorescent analysis of BxPC-3 cells using 11334-1-AP (PTP1B antibody) at dilution of 1:25 and Alexa Fluor 488-conjugated AffiniPure Goat Anti-Rabbit IgG(H+L).



Immunohistochemical analysis of paraffin-embedded human prostate cancer using 11334-1-AP (PTP1B antibody) at dilution of 1:50 (under 10x lens).