

À des fins de recherche uniquement

Anticorps Polyclonal de lapin anti-HDGF



Numéro de catalogue: 11344-1-AP

Phare

20 Publications

Informations de base

Numéro de catalogue:
11344-1-AP

Taille:
150ul, Concentration: 500 µg/ml by Nanodrop and 133 µg/ml by Bradford method using BSA as the standard;

Hôte:
Lapin

Isotype:
IgG

Immunogen Catalog Number:
AG1893

Numéro d'acquisition GenBank:
BC018991

Identification du gène (NCBI):
3068

Nom complet:
hepatoma-derived growth factor (high-mobility group protein 1-like)

MW calculé
26 kDa

MW observés:
40-45 kDa

Méthode de purification:
Purification par affinité contre l'antigène

Dilutions recommandées:
WB 1:5000-1:50000
IP 0.5-4.0 ug for IP and 1:500-1:2000 for WB
IHC 1:20-1:200
IF 1:50-1:500

Applications

Applications testées:
IF, IHC, IP, WB, ELISA

Demandes citées:
ChIP, CoIP, IF, IHC, IP, WB

Spécificité de l'espèce:
Humain

Espèces citées:
Humain, souris

Remarque-IHC: il est suggéré de démasquer l'antigène avec un tampon de TE buffer pH 9,0; (*) À défaut, 'le démasquage de l'antigène peut être 'effectué avec un tampon citrate pH 6,0.

Contrôles positifs:

WB : cellules HepG2, cellules HEK-293T, cellules HeLa

IP : cellules HepG2,

IHC : tissu de cancer du poumon humain, tissu de cancer du côlon humain, tissu de cancer du foie humain, tissu de tumeur ovarienne humain

IF : cellules HEK-293,

Informations générales

HDGF, also named as HMG1L2, belongs to the HDGF family. HDGF is a mitogen for many cell types with nuclear localization necessary for its mitogenic activity. HDGF has also been identified as an important prognostic marker in pathologic cell growth, as it is overexpressed in a number of cancers with expression linked to a poor outcome in lung, esophageal, pancreatic and hepatic cancer. HDGF is highly expressed in human NSCLC tissues, predicting worse prognosis in resected NSCLCs. It might be useful molecular biomarker for predicting the prognosis of resected NSCLCs.

Publications notables

Autrice	Pubmed ID	Journal	Application
Zhou Yanyan Y	20846397	Diagn Pathol	WB,IHC
Honghong Jiang	31612005	Oncol Lett	IHC
Longbin Zheng	36265285	Biochem Biophys Res Commun	WB

Stockage

Stockage:

Stocker à -20°C. Stable pendant un an après l'expédition.

Tampon de stockage:

PBS avec azoture de sodium à 0,02 % et glycérol à 50 % pH 7,3

L'aliquotage n'est pas nécessaire pour le stockage à -20C

*** Les 20ul contiennent 0,1% de BSA.

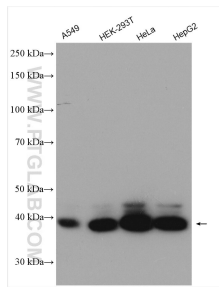
For technical support and original validation data for this product please contact:

T: 1 (888) 4PTGLAB (1-888-478-4522) (toll free in USA), or 1(312) 455-8498 (outside USA)

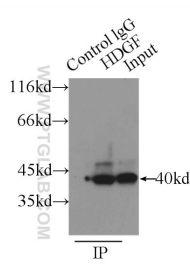
E: proteintech@ptglab.com
W: ptglab.com

This product is exclusively available under Proteintech Group brand and is not available to purchase from any other manufacturer.

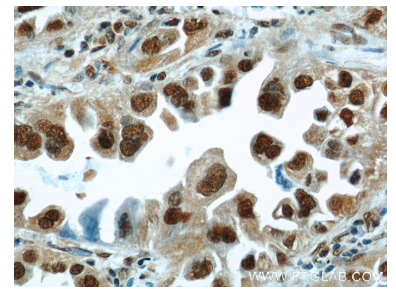
Données de validation sélectionnées



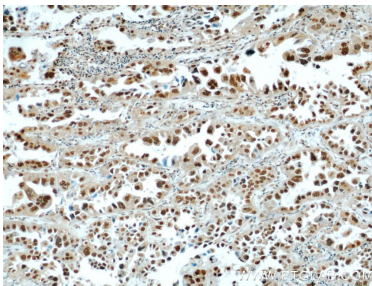
Various lysates were subjected to SDS PAGE followed by western blot with 11344-1-AP (HDGF antibody) at dilution of 1:20000 incubated at room temperature for 1.5 hours.



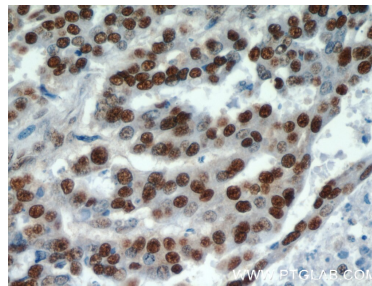
IP Result of anti-HDGF (IP:11344-1-AP, 3ug; Detection:11344-1-AP 1:1000) with HepG2 cells lysate 3000ug.



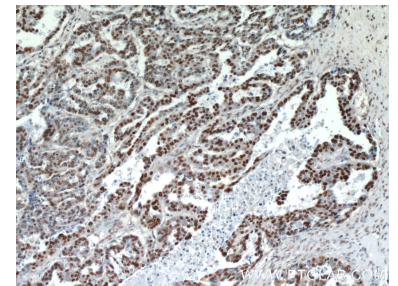
Immunohistochemical analysis of paraffin-embedded human lung cancer using 11344-1-AP (HDGF antibody) at dilution of 1:100 (under 40x lens).



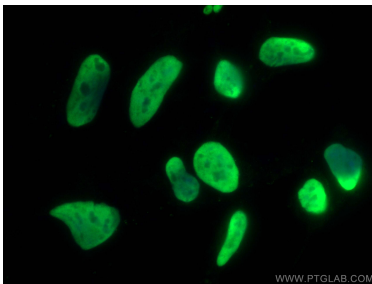
Immunohistochemical analysis of paraffin-embedded human lung cancer using 11344-1-AP (HDGF antibody) at dilution of 1:100 (under 10x lens).



Immunohistochemical analysis of paraffin-embedded human ovary tumor using 11344-1-AP (HDGF antibody) at dilution of 1:100 (under 40x lens).



Immunohistochemical analysis of paraffin-embedded human ovary tumor using 11344-1-AP (HDGF antibody) at dilution of 1:100 (under 10x lens).



Immunofluorescent analysis of (4% PFA) fixed HEK-293 cells using HDGF antibody (11344-1-AP) at dilution of 1:200 and CoraLite®488-Conjugated AffiniPure Goat Anti-Rabbit IgG(H+L).