

À des fins de recherche uniquement

Anticorps Polyclonal de lapin anti-NSD3



Numéro de catalogue: 11345-1-AP

Phare

15 Publications

Informations de base

Numéro de catalogue: 11345-1-AP	Numéro d'acquisition GenBank: BC012059	Méthode de purification: Purification par affinité contre l'antigène
Taille: 150ul , Concentration: 550 µg/ml by Nanodrop and 320 µg/ml by Bradford method using BSA as the standard;	Identification du gène (NCBI): 54904	Dilutions recommandées: WB 1:500-1:1000 IHC 1:20-1:200 IF 1:50-1:500
Hôte: Lapin	Nom complet: Wolf-Hirschhorn syndrome candidate 1-like 1	
Isotype: IgG	MW calculé: 1437 aa, 162 kDa	
Immunogen Catalog Number: AG1894	MW observés: 160-170 kDa, 68-72 kDa	

Applications

Applications testées:
FC, IF, IHC, WB, ELISA

Demandes citées:
ChIP, IF, IHC, WB

Spécificité de l'espèce:
Humain, rat, souris

Espèces citées:
Humain

Remarque-IHC: il est suggéré de démasquer l'antigène avec un tampon de TE buffer pH 9,0; (*) À défaut, 'le démasquage de l'antigène peut être 'effectué avec un tampon citrate pH 6,0.

Contrôles positifs:

WB : cellules HeLa, cellules HEK-293, tissu cardiaque de rat, tissu cardiaque de souris

IHC : tissu de lymphome humain,

IF : cellules HeLa,

Informations générales

WHSC1L1, also named as NSD3 and DC28, belongs to the histone-lysine methyltransferase family and SET2 subfamily. It is histone methyltransferase. WHSC1L1 is a potently transforming oncogenes based on the number of altered phenotypes expressed by the cells. It contains a PWWP-domain that is a methyl-lysine recognition motif involved in histone code modification and epigenetic regulation of gene expression. Knockdown of WHSC1L1 in 8p11-12-amplified breast cancer cells resulted in profound loss of growth and survival of these cells. (PMID: 20940404). This antibody recognize the long isoform (160-170 kDa) and short isoform (68-72 kDa).

Publications notables

Autrice	Pubmed ID	Journal	Application
Ga-Young Jeong	32967925	Cancer Res	IHC
Verónica García-Carpizo	27604143	Sci Rep	
Duo Xu	36291782	Cancers (Basel)	IHC

Stockage

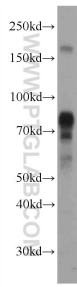
Stockage:
Stocker à -20°C. Stable pendant un an après l'expédition.
Tampon de stockage:
PBS avec azoture de sodium à 0,02 % et glycérol à 50 % pH 7,3
L'aliquotage n'est pas nécessaire pour le stockage à -20C

*** Les 20ul contiennent 0,1% de BSA.

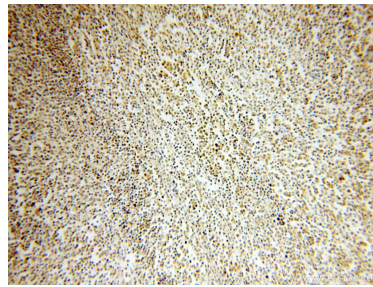
For technical support and original validation data for this product please contact:
T: 1 (888) 4PTGLAB (1-888-478-4522) (toll free in USA), or 1(312) 455-8498 (outside USA)
E: proteintech@ptglab.com
W: ptglab.com

This product is exclusively available under Proteintech Group brand and is not available to purchase from any other manufacturer.

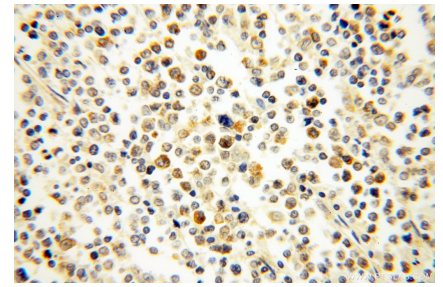
Données de validation sélectionnées



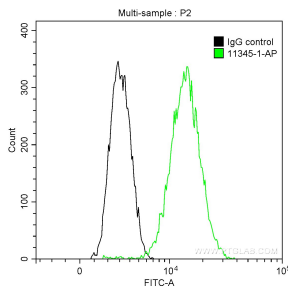
HeLa cells were subjected to SDS PAGE followed by western blot with 11345-1-AP (NSD3 antibody) at dilution of 1:600 incubated at room temperature for 1.5 hours.



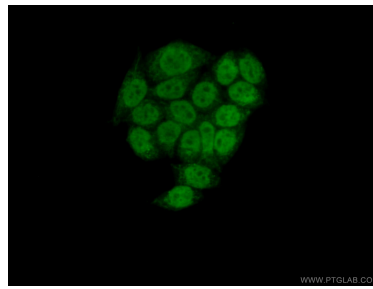
Immunohistochemical analysis of paraffin-embedded human lymphoma using 11345-1-AP (NSD3 antibody) at dilution of 1:50 (under 10x lens).



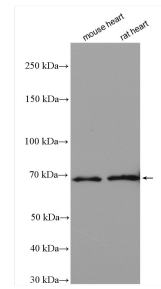
Immunohistochemical analysis of paraffin-embedded human lymphoma using 11345-1-AP (NSD3 antibody) at dilution of 1:50 (under 40x lens).



1x10⁶ HeLa cells were intracellularly stained with 0.2 ug Anti-Human NSD3 (11345-1-AP) and CoraLite@488-Conjugated AffiniPure Goat Anti-Rabbit IgG(H+L) at dilution 1:1000 (green), and 0.2 ug Control Antibody. Cells were fixed with 90% MeOH.



Immunofluorescent analysis of (10% Formaldehyde) fixed HeLa cells using 11345-1-AP (NSD3 antibody) at dilution of 1:50 and Alexa Fluor 488-conjugated AffiniPure Goat Anti-Rabbit IgG(H+L).



Various lysates were subjected to SDS PAGE followed by western blot with 11345-1-AP (NSD3 antibody) at dilution of 1:1500 incubated at room temperature for 1.5 hours.