

À des fins de recherche uniquement

# Anticorps Polyclonal de lapin anti-FLI1



Numéro de catalogue: 11347-1-AP

Phare

5 Publications

## Informations de base

Numéro de catalogue:

11347-1-AP

Taille:

150ul, Concentration: 533 µg/ml by Bradford method using BSA as the standard;

Hôte:

Lapin

Isotype:

IgG

Immunogen Catalog Number:

AG1899

Numéro d'acquisition GenBank:

BC010115

Identification du gène (NCBI):

2313

Nom complet:

Friend leukemia virus integration 1

MW calculé

452 aa, 51 kDa

MW observés:

51 kDa

Méthode de purification:

Purification par affinité contre l'antigène

Dilutions recommandées:

WB 1:500-1:1000

## Applications

Applications testées:

WB, ELISA

Demandes citées:

IHC, WB

Spécificité de l'espèce:

Humain, souris

Espèces citées:

Humain, souris

Contrôles positifs:

WB : cellules HL-60, cellules Jurkat, cellules MOLT-4, cellules Ramos, tissu cérébral humain, tissu de thymus de souris

## Informations générales

Friend leukemia virus integration1 (FLI1) that is also termed EWSR2 encodes a sequence-specific transcriptional activator involved in Ewing's sarcoma (EWS), a malignant small, round, blue cell tumour. It is a rare disease in which cancer cells are found in the bone or in soft tissue. The most common areas in which it occurs are the pelvis, the femur, the humerus, the ribs and clavicle. EWS occurs most frequently in teenagers and young adults. FLI1 protein may act as an aberrant transcription factor, but exact mechanisms of oncogenesis remains unknown.

## Publications notables

Autrice	Pubmed ID	Journal	Application
Huiling Wang	29138848	Mol Med Rep	WB
Pengfei Li	35038582	Mol Ther	WB
Fengxue Geng	28286742	Front Cell Infect Microbiol	WB

## Stockage

Stockage:

Stocker à -20°C. Stable pendant un an après l'expédition.

Tampon de stockage:

PBS avec azoture de sodium à 0,02 % et glycérol à 50 % pH 7,3

L'aliquotage n'est pas nécessaire pour le stockage à -20C

\*\*\* Les 20ul contiennent 0,1% de BSA.

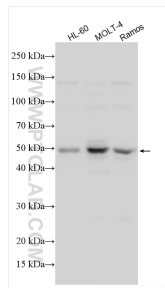
For technical support and original validation data for this product please contact:

T: 1 (888) 4PTGLAB (1-888-478-4522) (toll free in USA), or 1(312) 455-8498 (outside USA)

E: proteintech@ptglab.com  
W: ptglab.com

This product is exclusively available under Proteintech Group brand and is not available to purchase from any other manufacturer.

## Données de validation sélectionnées



Various lysates were subjected to SDS PAGE followed by western blot with 11347-1-AP (FLJ1 antibody) at dilution of 1:600 incubated at room temperature for 1.5 hours.