

À des fins de recherche uniquement

# Anticorps Polyclonal de lapin anti-DDX1



Numéro de catalogue: 11357-1-AP

Phare

16 Publications

## Informations de base

Numéro de catalogue:  
11357-1-AP

Taille:  
150ul, Concentration: 750 µg/ml by  
Nanodrop;

Hôte:  
Lapin

Isotype:  
IgG

Immunogen Catalog Number:  
AG1887

Numéro d'acquisition GenBank:  
BC012132

Identification du gène (NCBI):  
1653

Nom complet:  
DEAD (Asp-Glu-Ala-Asp) box  
polypeptide 1

MW calculé  
740 aa, 82 kDa

MW observés:  
70-82 kDa

Méthode de purification:  
Purification par affinité contre  
l'antigène

Dilutions recommandées:  
WB 1:2000-1:16000

## Applications

Applications testées:  
WB, ELISA

Demandes citées:  
CoIP, IF, IHC, IP, RIP, WB

Spécificité de l'espèce:  
Humain, rat, souris

Espèces citées:  
Humain, rat, souris

Contrôles positifs:

WB : cellules HEK-293, cellules A431, cellules COLO 320, cellules HeLa, cellules MCF-7, cellules NCI-H1299, cellules NIH/3T3, cellules PC-3, tissu cérébral de rat, tissu cérébral de souris, tissu rénal de rat, tissu rénal de souris

## Informations générales

DDX1 is a DEAD box protein, which is putative RNA helicases with a characteristic asp-glu-ala-asp (DEAD) box motif. DEAD box proteins involve in translation initiation, splicing, and ribosome and spliceosome assembly by altering RNA secondary structure. As a RNA helicase, DDX1 has a role in RNA clearance at DNA double-strand breaks (DSBs), thereby facilitating the template-guided repair of transcriptionally active regions of the genome.

## Publications notables

Autrice	Pubmed ID	Journal	Application
Zonghong Li	30295850	Nucleic Acids Res	WB,IF
Federica Accornero	29192139	Nat Commun	WB
Michael J Cargill	34083132	DNA Repair (Amst)	WB

## Stockage

Stockage:

Stocker à -20°C. Stable pendant un an après l'expédition.

Tampon de stockage:

PBS avec azoture de sodium à 0,02 % et glycérol à 50 % pH 7,3

L'aliquotage n'est pas nécessaire pour le stockage à -20C

\*\*\* Les 20ul contiennent 0,1% de BSA.

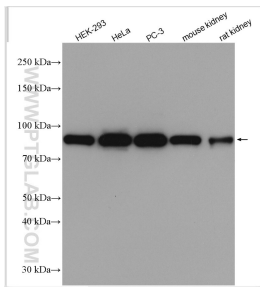
For technical support and original validation data for this product please contact:

T: 1 (888) 4PTGLAB (1-888-478-4522) (toll free  
in USA), or 1(312) 455-8498 (outside USA)

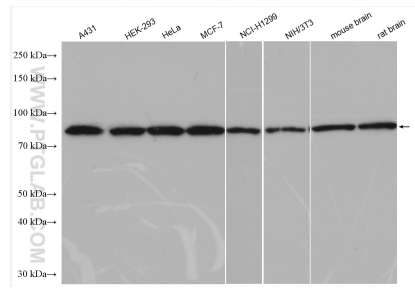
E: proteintech@ptglab.com  
W: ptglab.com

This product is exclusively available under Proteintech Group brand and is not available to purchase from any other manufacturer.

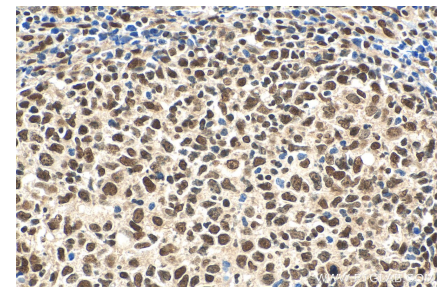
## Données de validation sélectionnées



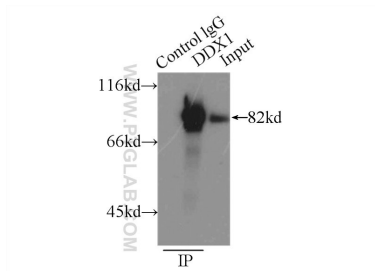
Various lysates were subjected to SDS PAGE followed by western blot with 11357-1-AP (DDX1 antibody) at dilution of 1:8000 incubated at room temperature for 1.5 hours.



A431 cells were subjected to SDS PAGE followed by western blot with 11357-1-AP (DDX1 antibody) at dilution of 1:30000 incubated at room temperature for 1.5 hours.



Immunohistochemical analysis of paraffin-embedded human lymphoma tissue slide using 11357-1-AP (DDX1 antibody) at dilution of 1:200 (under 40x lens). Heat mediated antigen retrieval with Tris-EDTA buffer (pH 9.0).



IP Result of anti-DDX1 (IP:11357-1-AP, 3ug; Detection:11357-1-AP 1:1000) with PC-3 cells lysate 5000ug.