

À des fins de recherche uniquement

# Anticorps Polyclonal de lapin anti-TLE3



Numéro de catalogue: 11372-1-AP

Phare

19 Publications

## Informations de base

Numéro de catalogue:  
11372-1-AP

Taille:  
150ul, Concentration: 550 µg/ml by Nanodrop and 227 µg/ml by Bradford method using BSA as the standard;

Hôte:  
Lapin

Isotype:  
IgG

Immunogen Catalog Number:  
AG1930

Numéro d'acquisition GenBank:  
BC015729

Identification du gène (NCBI):  
7090

Nom complet:  
transducin-like enhancer of split 3 (E(sp1) homolog, Drosophila)

MW calculé  
772 aa, 83 kDa

MW observés:  
83 kDa

Méthode de purification:  
Purification par affinité contre l'antigène

Dilutions recommandées:  
WB 1:1000-1:6000  
IP 0.5-4.0 ug for IP and 1:200-1:1000 for WB  
IHC 1:20-1:200  
IF 1:10-1:100

## Applications

Applications testées:  
IF, IHC, IP, WB, ELISA

Demandes citées:  
ChIP, CoIP, IF, IHC, WB

Spécificité de l'espèce:  
Humain, rat, souris

Espèces citées:  
Humain, souris

**Remarque-IHC: il est suggéré de démasquer l'antigène avec un tampon de TE buffer pH 9,0; (\*) À défaut, le démasquage de l'antigène peut être effectué avec un tampon citrate pH 6,0.**

Contrôles positifs:

WB : cellules HeLa, cellules A431, cellules HEK-293, cellules HepG2, tissu pulmonaire humain

IP : cellules HeLa,

IHC : tissu de cancer du sein humain, tissu de cancer du poumon humain

IF : cellules HepG2,

## Informations générales

TLE3, also named as KIAA1547 and ESG3, belongs to the WD repeat Groucho/TLE family. It is a transcriptional corepressor that binds to a number of transcription factors. It inhibits the transcriptional activation mediated by CTNNB1 and TCF family members in Wnt signaling. The effects of full-length TLE family members may be modulated by association with dominant-negative AES. TLE3 is a member of the transducin-like enhancer of split (TLE) family of proteins that have been implicated in the tumorigenesis and classification of sarcomas. It is a candidate biomarker of response to taxane

## Publications notables

| Autrice               | Pubmed ID | Journal            | Application |
|-----------------------|-----------|--------------------|-------------|
| Mohsan Saeed          | 32997711  | PLoS Pathog        | WB          |
| Francisco José Ortega | 25249007  | J Mol Med (Berl)   | WB          |
| Ying Ren              | 31645658  | Acta Pharmacol Sin | WB          |

## Stockage

Stockage:

Stocker à -20°C. Stable pendant un an après l'expédition.

Tampon de stockage:

PBS avec azoture de sodium à 0,02 % et glycérol à 50 % pH 7,3

L'aliquotage n'est pas nécessaire pour le stockage à -20C

\*\*\* Les 20ul contiennent 0,1% de BSA.

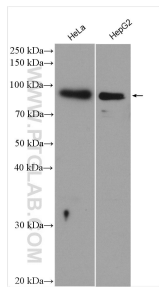
For technical support and original validation data for this product please contact:

T: 1 (888) 4PTGLAB (1-888-478-4522) (toll free in USA), or 1(312) 455-8498 (outside USA)

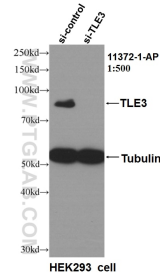
E: proteintech@ptglab.com  
W: ptglab.com

This product is exclusively available under Proteintech Group brand and is not available to purchase from any other manufacturer.

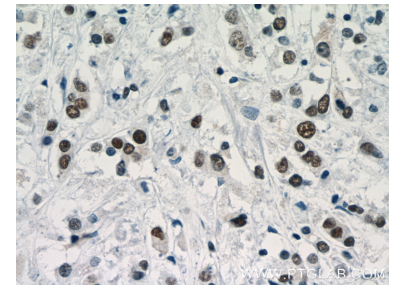
## Données de validation sélectionnées



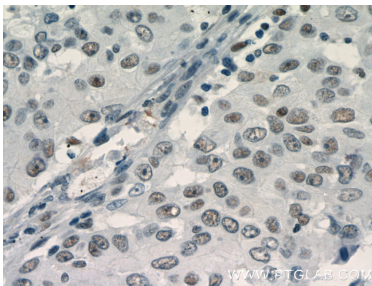
HeLa cells were subjected to SDS PAGE followed by western blot with 11372-1-AP (TLE3 antibody) at dilution of 1:3000 incubated at room temperature for 1.5 hours.



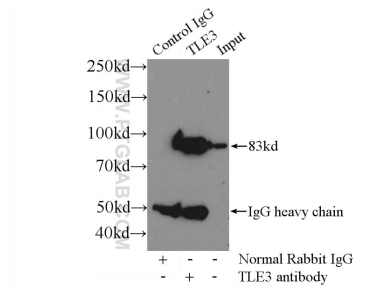
WB result of TLE3 antibody (11372-1-AP, 1:500) with si-Control and si-TLE3 transfected HEK293 cells.



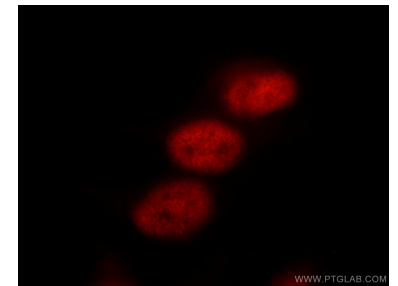
Immunohistochemical analysis of paraffin-embedded human breast cancer slide using 11372-1-AP (TLE3 Antibody) at dilution of 1:50.



Immunohistochemical analysis of paraffin-embedded human lung cancer slide using 11372-1-AP (TLE3 Antibody) at dilution of 1:50.



IP Result of anti-TLE3 (IP:11372-1-AP, 4ug; Detection:11372-1-AP 1:300) with HeLa cells lysate 1600ug.



Immunofluorescent analysis of HepG2 cells using 11372-1-AP (TLE3 antibody) at dilution of 1:25 and Rhodamine-Goat anti-Rabbit IgG.