

À des fins de recherche uniquement

Anticorps Polyclonal de lapin anti-UBE2D1/2/3/4



Numéro de catalogue: 11373-1-AP

Informations de base

Numéro de catalogue: 11373-1-AP	Numéro d'acquisition GenBank: BC015997	Méthode de purification: Purification par affinité contre l'antigène
Taille: 150ul, Concentration: 550 µg/ml by Nanodrop;	Identification du gène (NCBI): 7321	Dilutions recommandées: WB 1:2000-1:12000
Hôte: Lapin	Nom complet: ubiquitin-conjugating enzyme E2D 1 (UBC4/5 homolog, yeast)	IP 0.5-4.0 ug for IP and 1:200-1:1000 for WB
Isotype: IgG	MW calculé: 17 kDa	IHC 1:20-1:200
Immunogen Catalog Number: AG1932	MW observés: 17 kDa	

Applications

Applications testées:

IHC, IP, WB, ELISA

Spécificité de l'espèce:

Humain, rat, souris

Remarque-IHC: il est suggéré de démasquer l'antigène avec un tampon de TE buffer pH 9,0; (*) À défaut, 'le démasquage de l'antigène peut être effectué avec un tampon citrate pH 6,0.

Contrôles positifs:

WB : cellules HeLa, cellules Jurkat, cellules NIH/3T3, tissu cardiaque de souris, tissu de thymus de souris

IP : cellules Jurkat,

IHC : tissu de cancer de la prostate humain,

Informations générales

Ubiquitination is a post-translational modification pathway or is part of the specific protein-degradation pathway by the 26S proteasome. Ubiquitination of a target protein involves multistep enzymatic reaction catalyzed by a cascade of enzymes including Ub-activating enzymes (E1s), Ub-conjugating enzymes (E2s) and Ub ligases (E3s) (PMID: 23542885). UBE2D family, which has 4 members named as UBE2D1/2/3/4, is an E2 ubiquitin-conjugating enzyme family in the ubiquitin-proteasome system. This antibody can recognize all the four members of UBE2D due to the high homology.

Stockage

Stockage:

Stocker à -20°C. Stable pendant un an après l'expédition.

Tampon de stockage:

PBS avec azoture de sodium à 0,02 % et glycérol à 50 % pH 7,3

L'aliquotage n'est pas nécessaire pour le stockage à -20C

*** Les 20ul contiennent 0,1% de BSA.

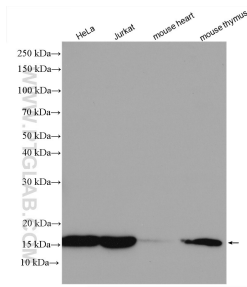
For technical support and original validation data for this product please contact:

T: 1 (888) 4PTGLAB (1-888-478-4522) (toll free in USA), or 1(312) 455-8498 (outside USA)

E: proteintech@ptglab.com
W: ptglab.com

This product is exclusively available under Proteintech Group brand and is not available to purchase from any other manufacturer.

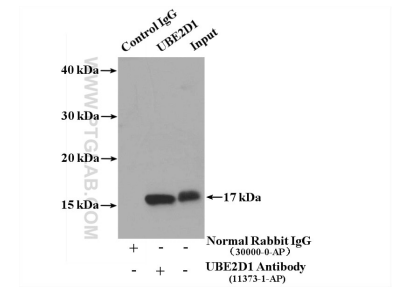
Données de validation sélectionnées



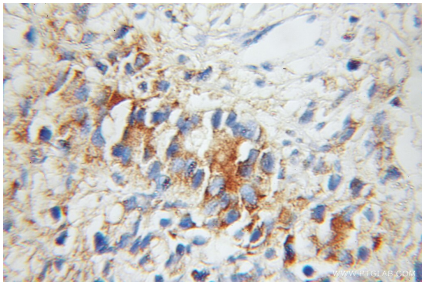
Various lysates were subjected to SDS PAGE followed by western blot with 11373-1-AP (UBE2D1/2/3/4 antibody) at dilution of 1:6000 incubated at room temperature for 1.5 hours.



NIH/3T3 cells were subjected to SDS PAGE followed by western blot with 11373-1-AP (UBE2D1-Specific antibody) at dilution of 1:500.



IP result of anti-UBE2D1-Specific (IP:11373-1-AP, 4ug; Detection:11373-1-AP 1:300) with Jurkat cells lysate 2600 ug.



Immunohistochemical analysis of paraffin-embedded human prostate cancer using 11373-1-AP (UBE2D1-Specific antibody) at dilution of 1:50 (under 10x lens).