

À des fins de recherche uniquement

Anticorps Polyclonal de lapin anti-Cortactin



Numéro de catalogue: 11381-1-AP

13 Publications

Informations de base

Numéro de catalogue:
11381-1-AP

Taille:
150ul, Concentration: 750 µg/ml by Nanodrop and 433 µg/ml by Bradford method using BSA as the standard;

Hôte:
Lapin

Isotype:
IgG

Immunogen Catalog Number:
AG1940

Numéro d'acquisition GenBank:
BC008799

Identification du gène (NCBI):
2017

Nom complet:
cortactin

MW calculé
57 kDa

MW observés:
70-85 kDa

Méthode de purification:
Purification par affinité contre l'antigène

Dilutions recommandées:
WB 1:5000-1:50000
IP 0.5-4.0 ug for IP and 1:500-1:2000 for WB
IHC 1:200-1:1000
IF 1:200-1:800

Applications

Applications testées:
FC, IF, IHC, IP, WB, ELISA

Demandes citées:
IF, IHC, WB

Spécificité de l'espèce:
Humain, rat, souris

Espèces citées:
Humain, rat, souris

Remarque-IHC: il est suggéré de démasquer l'antigène avec un tampon de TE buffer pH 9,0; (*) A défaut, 'le démasquage de l'antigène peut être effectué avec un tampon citrate pH 6,0.

Contrôles positifs:

WB : cellules HEK-293, cellules A549, cellules HeLa, cellules HT-1080, cellules HUVEC, cellules MCF-7, cellules NIH/3T3

IP : cellules MCF-7,

IHC : tissu de cancer du sein humain, tissu de côlon de souris

IF : cellules HeLa,

Informations générales

Cortactin, encoded by CTTN gene (formerly EMS1), was originally identified as a substrate of the Src kinase. It is a cytoskeletal protein that interacts with F-actin and Arp2/3 complex and plays an important role in regulation of actin assembly and cytoskeleton dynamics. Overexpression of cortactin increases cell migration, and is thought to contribute to the invasive phenotype of breast cancer and several other tumors. Three isoforms of cortactin exist due to the alternative splicing. Although cortactin has a predicted molecular weight around 65 kDa, it was detected as 80/85 doublet or as multiple bands between 75 and 85 kDa on SDS-PAGE (PMID: 18607838, 19089942).

Publications notables

Autrice	Pubmed ID	Journal	Application
Chengmei Huang	34583750	J Exp Clin Cancer Res	WB
Hao Bo	30588252	J Cancer	WB
Jing Wang	36357564	Cancer Gene Ther	WB

Stockage

Stockage:

Stocker à -20°C. Stable pendant un an après l'expédition.

Tampon de stockage:

PBS avec azoture de sodium à 0,02 % et glycérol à 50 % pH 7,3

L'aliquotage n'est pas nécessaire pour le stockage à -20C

*** Les 20ul contiennent 0,1% de BSA.

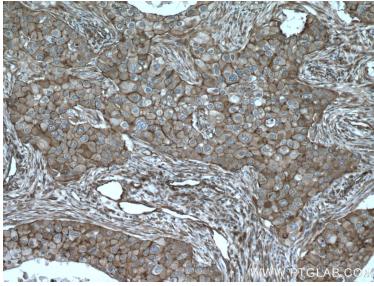
For technical support and original validation data for this product please contact:

T: 1 (888) 4PTGLAB (1-888-478-4522) (toll free in USA), or 1(312) 455-8498 (outside USA)

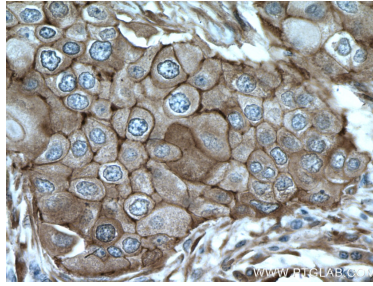
E: proteintech@ptglab.com
W: ptglab.com

This product is exclusively available under Proteintech Group brand and is not available to purchase from any other manufacturer.

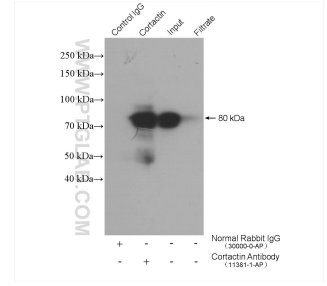
Données de validation sélectionnées



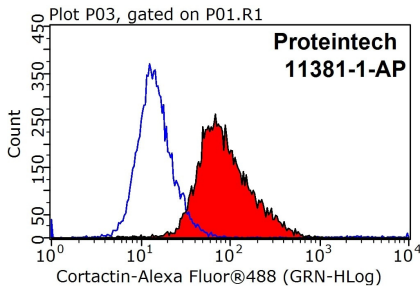
Immunohistochemical analysis of paraffin-embedded human breast cancer tissue slide using 11381-1-AP (Cortactin antibody) at dilution of 1:200 (under 10x lens). Heat mediated antigen retrieval with Tris-EDTA buffer (pH 9.0).



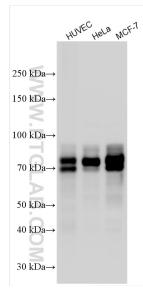
Immunohistochemical analysis of paraffin-embedded human breast cancer tissue slide using 11381-1-AP (Cortactin antibody) at dilution of 1:200 (under 40x lens). Heat mediated antigen retrieval with Tris-EDTA buffer (pH 9.0).



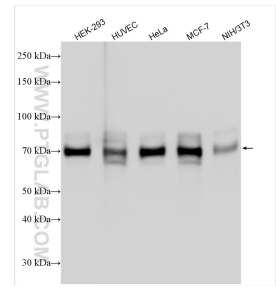
IP result of anti-Cortactin (IP:11381-1-AP, 4ug; Detection:11381-1-AP 1:1000) with MCF-7 cells lysate 2400 ug.



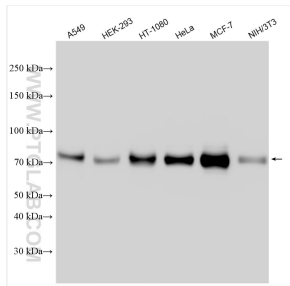
1X10⁶ HeLa cells were stained with 0.2ug Cortactin antibody (11381-1-AP, red) and control antibody (blue). Fixed with 90% MeOH blocked with 3% BSA (30 min). Alexa Fluor 488-conjugated AffiniPure Goat Anti-Rabbit IgG(H+L) with dilution 1:1000.



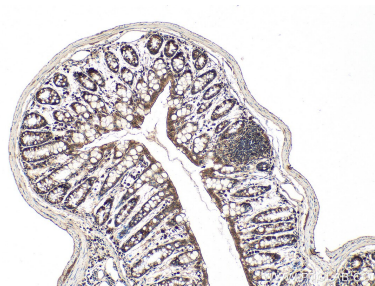
Various lysates were subjected to SDS PAGE followed by western blot with 11381-1-AP (Cortactin antibody) at dilution of 1:20000 incubated at room temperature for 1.5 hours.



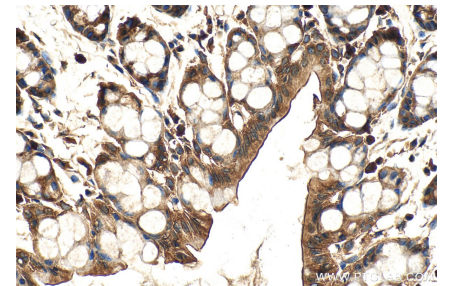
Various lysates were subjected to SDS PAGE followed by western blot with 11381-1-AP (Cortactin antibody) at dilution of 1:10000 incubated at room temperature for 1.5 hours.



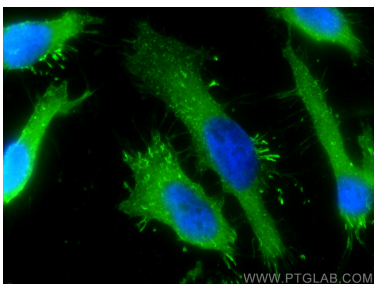
Various lysates were subjected to SDS PAGE followed by western blot with 11381-1-AP (Cortactin antibody) at dilution of 1:20000 incubated at room temperature for 1.5 hours.



Immunohistochemical analysis of paraffin-embedded mouse colon tissue slide using 11381-1-AP (Cortactin antibody) at dilution of 1:800 (under 10x lens). Heat mediated antigen retrieval with Tris-EDTA buffer (pH 9.0).



Immunohistochemical analysis of paraffin-embedded mouse colon tissue slide using 11381-1-AP (Cortactin antibody) at dilution of 1:800 (under 40x lens). Heat mediated antigen retrieval with Tris-EDTA buffer (pH 9.0).



Immunofluorescent analysis of (-20°C Methanol)
fixed HeLa cells using Cortactin antibody (11381-1-
AP) at dilution of 1:400 and CoraLite®488-
Conjugated AffiniPure Goat Anti-Rabbit IgG(H+L).