

À des fins de recherche uniquement

# Anticorps Polyclonal de lapin anti-SPRY2



Numéro de catalogue: 11383-1-AP

Phare

5 Publications

## Informations de base

Numéro de catalogue:  
11383-1-AP

Taille:  
150ul , Concentration: 433 µg/ml by  
Bradford method using BSA as the  
standard;

Hôte:  
Lapin

Isotype:  
IgG

Immunogen Catalog Number:  
AG1918

Numéro d'acquisition GenBank:  
BC015745

Identification du gène (NCBI):  
10253

Nom complet:  
sprouty homolog 2 (Drosophila)

MW calculé  
35 kDa

MW observés:  
35-40 kDa, 60-65 kDa

Méthode de purification:  
Purification par affinité contre  
l'antigène

Dilutions recommandées:  
WB 1:500-1:1000  
IHC 1:50-1:500  
IF 1:10-1:100

## Applications

Applications testées:  
IF, IHC, WB, ELISA

Demandes citées:  
IF, IHC, WB

Spécificité de l'espèce:  
Humain, rat, souris

Espèces citées:  
Humain, souris

**Remarque-IHC: il est suggéré de démasquer  
l'antigène avec un tampon de TE buffer pH  
9,0; (\*) A défaut, 'le démasquage de  
l'antigène peut être 'effectué avec un  
tampon citrate pH 6,0.**

Contrôles positifs:

WB : cellules SW-1990, cellules A375, cellules Jurkat,  
cellules Neuro-2a

IHC : tissu de cancer du pancréas humain,

IF : cellules A375,

## Informations générales

Sprouty (SPRY) genes encode intracellular inhibitors of receptor tyrosine kinase (RTK) signaling pathways, including those triggered by fibroblast growth factors (Fgfs). In addition to its well-reported function as an inhibitor of the RAS/RAF/MEK signalling cascade, SPRY2 exerts its inhibitory role in the PI3K/AKT signalling pathway through PTEN, and inhibits ERK/MAPK activity via EGFR trafficking. SPRY2 was detected 60-65 kDa (PMID:29291435).

## Publications notables

Autrice	Pubmed ID	Journal	Application
Takaharu Taketomi	28921936	Cell Biol Int	WB
Guangying Yang	35682694	Int J Mol Sci	WB
Nai-Jie Fu	35307375	Toxicol Appl Pharmacol	WB

## Stockage

Stockage:

Stocker à -20°C. Stable pendant un an après l'expédition.

Tampon de stockage:

PBS avec azoture de sodium à 0,02 % et glycérol à 50 % pH 7,3

L'aliquotage n'est pas nécessaire pour le stockage à -20C

\*\*\* Les 20ul contiennent 0,1% de BSA.

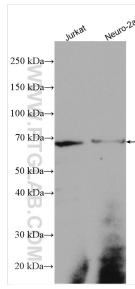
For technical support and original validation data for this product please contact:

T: 1 (888) 4PTGLAB (1-888-478-4522) (toll free  
in USA), or 1(312) 455-8498 (outside USA)

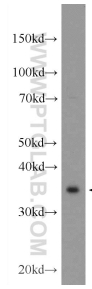
E: proteintech@ptglab.com  
W: ptglab.com

This product is exclusively available under Proteintech Group brand and is not available to purchase from any other manufacturer.

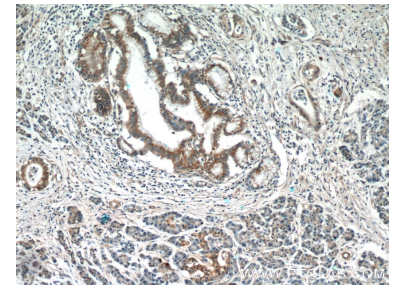
## Données de validation sélectionnées



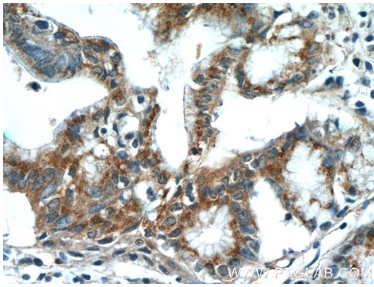
Various lysates were subjected to SDS PAGE followed by western blot with 11383-1-AP (SPRY2 antibody) at dilution of 1:800 incubated at room temperature for 1.5 hours.



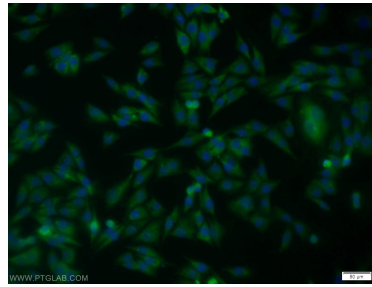
SW 1990 cells were subjected to SDS PAGE followed by western blot with 11383-1-AP (SPRY2 Antibody) at dilution of 1:600 incubated at room temperature for 1.5 hours.



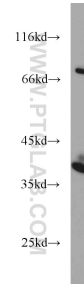
Immunohistochemical analysis of paraffin-embedded human pancreas cancer tissue slide using 11383-1-AP (SPRY2 Antibody) at dilution of 1:50 (under 10x lens).



Immunohistochemical analysis of paraffin-embedded human pancreas cancer tissue slide using 11383-1-AP (SPRY2 Antibody) at dilution of 1:50 (under 40x lens).



Immunofluorescent analysis of A375 cells using 11383-1-AP (SPRY2 antibody) at dilution of 1:25 and Alexa Fluor 488-conjugated AffiniPure Goat Anti-Rabbit IgG(H+L).



A375 cells were subjected to SDS PAGE followed by western blot with 11383-1-AP (SPRY2 antibody) at dilution of 1:500 incubated at room temperature for 1.5 hours.