

À des fins de recherche uniquement

# Anticorps Polyclonal de lapin anti-RPH3A



Numéro de catalogue: 11396-1-AP

4 Publications

## Informations de base

Numéro de catalogue:  
11396-1-AP

Taille:  
150ul, Concentration: 300 µg/ml by Nanodrop and 200 µg/ml by Bradford method using BSA as the standard;

Hôte:  
Lapin

Isotype:  
IgG

Immunogen Catalog Number:  
AG1956

Numéro d'acquisition GenBank:  
BC017259

Identification du gène (NCBI):  
22895  
Nom complet:  
rabphilin 3A homolog (mouse)

MW calculé  
690 aa, 76 kDa

MW observés:  
76 kDa

Méthode de purification:  
Purification par affinité contre l'antigène

Dilutions recommandées:  
WB 1:500-1:1000  
IHC 1:50-1:500  
IF 1:10-1:100

## Applications

Applications testées:  
IF, IHC, WB, ELISA

Demandes citées:  
IF, WB

Spécificité de l'espèce:  
Humain, rat, souris

Espèces citées:  
Humain, rat, souris

**Remarque-IHC: il est suggéré de démasquer l'antigène avec un tampon de TE buffer pH 9,0; (\*) A défaut, le démasquage de l'antigène peut être effectué avec un tampon citrate pH 6,0.**

Contrôles positifs:

WB : cellules COLO 320, tissu cérébral humain

IHC : tissu cérébral de souris,

IF : cellules COLO 320,

## Informations générales

RAB3A is a small G protein that is thought to act in exocytosis of neurotransmitters and hormones in synaptic neurotransmission and cell-cell communication. RPH3A (RPH3A), a RAB3A effector, is a neuronal C2 domain tandem containing protein that is involved in the neuronal transmitter process. Huntington's disease (HD) is a hereditary neurodegenerative disorder characterized by progressive motor disturbances, cognitive defects and dementia. Level of rabphilin 3A is substantially decreased in synapses of most brain regions in R6/1 transgenic mouse model of HD suggesting a role of RPH3A in impaired synaptic transmission.

## Publications notables

Autrice	Pubmed ID	Journal	Application
Tianzhi Li	36173100	Elife	WB
Tatsuaki Kurosaki	36356584	Mol Cell	WB
Elena Ferrari	35918045	Pharmacol Res	WB, IF

## Stockage

Stockage:

Stocker à -20°C. Stable pendant un an après l'expédition.

Tampon de stockage:

PBS avec azoture de sodium à 0,02 % et glycérol à 50 % pH 7,3

L'aliquotage n'est pas nécessaire pour le stockage à -20C

\*\*\* Les 20ul contiennent 0,1% de BSA.

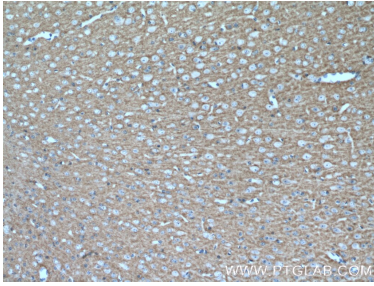
For technical support and original validation data for this product please contact:

T: 1 (888) 4PTGLAB (1-888-478-4522) (toll free in USA), or 1(312) 455-8498 (outside USA)

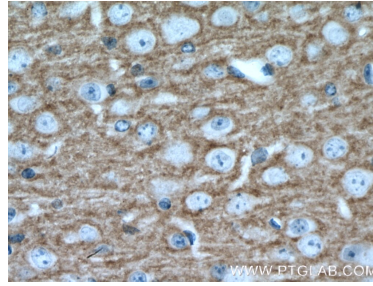
E: proteintech@ptglab.com  
W: ptglab.com

This product is exclusively available under Proteintech Group brand and is not available to purchase from any other manufacturer.

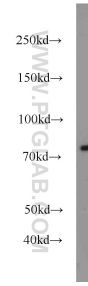
## Données de validation sélectionnées



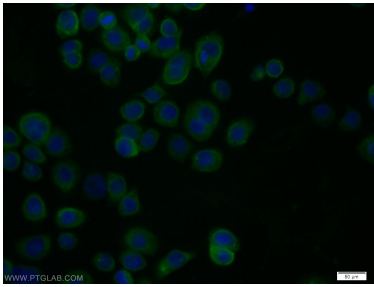
Immunohistochemical analysis of paraffin-embedded mouse brain tissue slide using 11396-1-AP (RPH3A antibody) at dilution of 1:200 (under 10x lens). Heat mediated antigen retrieval with Tris-EDTA buffer (pH 9.0).



Immunohistochemical analysis of paraffin-embedded mouse brain tissue slide using 11396-1-AP (RPH3A antibody) at dilution of 1:200 (under 40x lens). Heat mediated antigen retrieval with Tris-EDTA buffer (pH 9.0).



COLO 320 cells were subjected to SDS PAGE followed by western blot with 11396-1-AP (RPH3A antibody) at dilution of 1:800 incubated at room temperature for 1.5 hours.



Immunofluorescent analysis of COLO 320 cells using 11396-1-AP (RPH3A antibody) at dilution of 1:25 and Alexa Fluor 488-conjugated AffiniPure Goat Anti-Rabbit IgG(H+L).