

À des fins de recherche uniquement

# Anticorps Polyclonal de lapin anti-Septin 2



Numéro de catalogue: 11397-1-AP

Phare

22 Publications

## Informations de base

Numéro de catalogue:  
11397-1-AP

Taille:  
150ul, Concentration: 450 µg/ml by  
Nanodrop and 293 µg/ml by Bradford  
method using BSA as the standard;

Hôte:  
Lapin

Isotype:  
IgG

Immunogen Catalog Number:  
AG1946

Numéro d'acquisition GenBank:  
BC014455

Identification du gène (NCBI):  
4735

Nom complet:  
septin 2

MW calculé  
41 kDa

MW observés:  
45 kDa

Méthode de purification:  
Purification par affinité contre  
l'antigène

Dilutions recommandées:  
WB 1:1000-1:4000  
IP 0.5-4.0 ug for IP and 1:500-1:2000  
for WB  
IHC 1:50-1:500  
IF 1:50-1:500

## Applications

Applications testées:  
FC, IF, IHC, IP, WB, ELISA

Demandes citées:  
IF, IP, WB

Spécificité de l'espèce:  
Humain, rat, souris

Espèces citées:  
Humain, rat, souris

**Remarque-IHC: il est suggéré de démasquer l'antigène avec un tampon de TE buffer pH 9,0; (\*) A défaut, 'le démasquage de l'antigène peut être 'effectué avec un tampon citrate pH 6,0.**

Contrôles positifs:

WB : tissu cérébral de souris, cellules C6, cellules HEK-293, cellules HeLa, cellules Jurkat, cellules K-562, tissu cardiaque de souris, tissu cérébral de rat, tissu de muscle squelettique humain

IP : tissu cérébral de souris,

IHC : tissu de cancer du foie humain, tissu de cancer du pancréas humain

IF : cellules HepG2, cellules hTERT-RPE1 et fibroblastes embryonnaires de souris

## Informations générales

Septin-2, also named as DIFF6, KIAA0158, NEDD5 and SEPT2, belongs to the septin family. It is a filament-forming cytoskeletal GTPase. SEPT2 is required for normal organization of the actin cytoskeleton. It plays a role in ciliogenesis and collective cell movements. SEPT2 is coordinated expression with SEPT6 and SEPT7. (PMID:21737677)

## Publications notables

Autrice	Pubmed ID	Journal	Application
Sellin Mikael E ME	21737677	Mol Biol Cell	WB
Larisa Volceanov	25293760	MBio	WB, IF, IP
Wei Zhang	33200802	Mol Med Rep	WB

## Stockage

Stockage:

Stocker à -20°C. Stable pendant un an après l'expédition.

Tampon de stockage:

PBS avec azoture de sodium à 0,02 % et glycérol à 50 % pH 7,3

L'aliquotage n'est pas nécessaire pour le stockage à -20C

\*\*\* Les 20ul contiennent 0,1% de BSA.

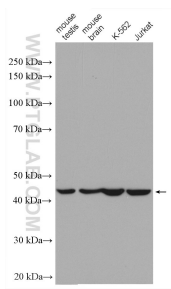
For technical support and original validation data for this product please contact:

T: 1 (888) 4PTGLAB (1-888-478-4522) (toll free in USA), or 1(312) 455-8498 (outside USA)

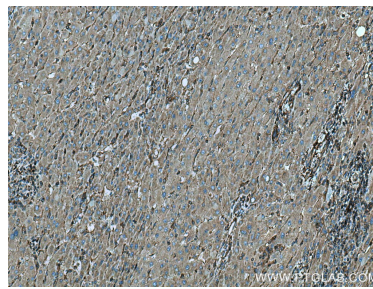
E: proteintech@ptglab.com  
W: ptglab.com

This product is exclusively available under Proteintech Group brand and is not available to purchase from any other manufacturer.

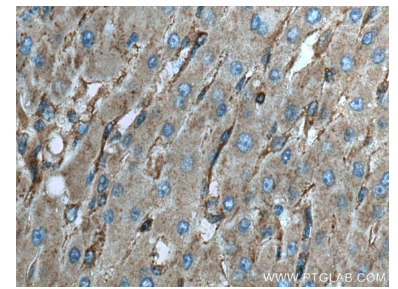
# Données de validation sélectionnées



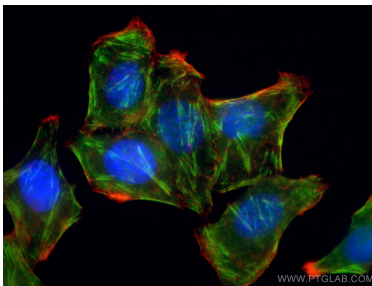
Various lysates were subjected to SDS PAGE followed by western blot with 11397-1-AP (Septin 2 antibody) at dilution of 1:2000 incubated at room temperature for 1.5 hours.



Immunohistochemical analysis of paraffin-embedded human liver cancer tissue slide using 11397-1-AP (Septin 2 antibody) at dilution of 1:200 (under 10x lens). Heat mediated antigen retrieval with Tris-EDTA buffer (pH 9.0).

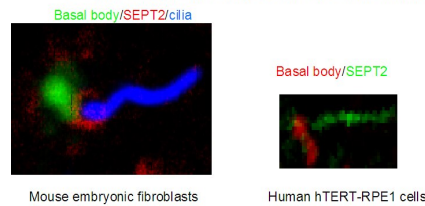


Immunohistochemical analysis of paraffin-embedded human liver cancer tissue slide using 11397-1-AP (Septin 2 antibody) at dilution of 1:200 (under 40x lens). Heat mediated antigen retrieval with Tris-EDTA buffer (pH 9.0).

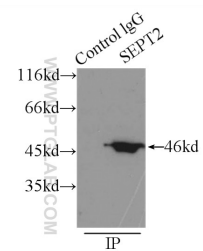


Immunofluorescent analysis of (4% PFA) fixed HepG2 cells using 11397-1-AP (Septin 2 antibody), at dilution of 1:200 and CoraLite@488-Conjugated AffiniPure Goat Anti-Rabbit IgG(H+L).

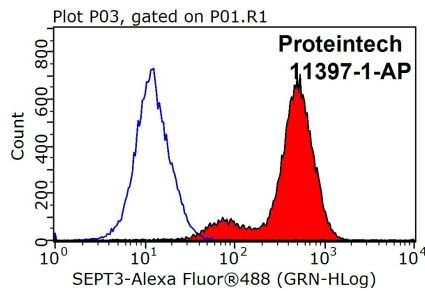
SEPTIN2 marks the transition zone and cilium



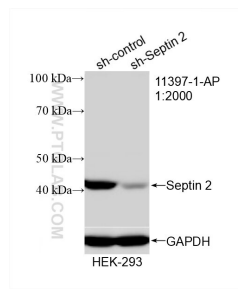
IF result from Dr. Kevin Corbit. Septin 2 (11397-1-AP) marks the transition zone and cilium of Human hTERT-RPE1 cells and Mouse embryonic fibroblasts.



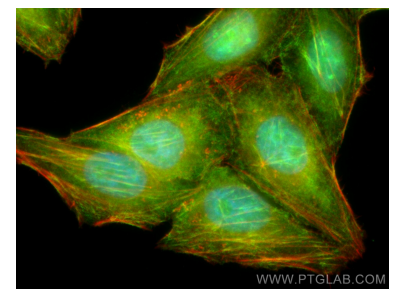
IP Result of anti-Septin 2 (IP:11397-1-AP, 3ug; Detection:11397-1-AP 1:1000) with mouse brain tissue lysate 5000ug.



1X10<sup>6</sup> MCF-7 cells were stained with 0.2ug Septin 2 antibody (11397-1-AP, red) and control antibody (blue). Fixed with 90% MeOH blocked with 3% BSA (30 min). Alexa Fluor 488-conjugated AffiniPure Goat Anti-Rabbit IgG(H+L) with dilution 1:1000.



WB result of Septin 2 antibody (11397-1-AP; 1:2000; incubated at room temperature for 1.5 hours) with sh-Control and sh-Septin 2 transfected HEK-293 cells.



Immunofluorescent analysis of (4% PFA) fixed HepG2 cells using Septin 2 antibody (11397-1-AP) at dilution of 1:400 and CoraLite@488-Conjugated AffiniPure Goat Anti-Rabbit IgG(H+L), CL594-Phalloidin (red).