

À des fins de recherche uniquement

Anticorps Polyclonal de lapin anti-ASRGL1



Numéro de catalogue: 11400-1-AP

13 Publications

Informations de base

Numéro de catalogue:

11400-1-AP

Taille:

150ul, Concentration: 750 µg/ml by Nanodrop and 367 µg/ml by Bradford method using BSA as the standard;

Hôte:

Lapin

Isotype:

IgG

Immunogen Catalog Number:

AG1955

Numéro d'acquisition GenBank:

BC021295

Identification du gène (NCBI):

80150

Nom complet:

asparaginase like 1

MW calculé

308 aa, 32 kDa

MW observés:

32-40 kDa, 20-25 kDa, 15-19 kDa

Méthode de purification:

Purification par affinité contre l'antigène

Dilutions recommandées:

WB 1:500-1:2000

IP 0.5-4.0 ug for IP and 1:500-1:1000 for WB

IHC 1:20-1:200

IF 1:50-1:500

Applications

Applications testées:

IF, IHC, IP, WB, ELISA

Demandes citées:

IF, IHC, WB

Spécificité de l'espèce:

Humain, rat, souris

Espèces citées:

Humain, rat, souris

Remarque-IHC: il est suggéré de démasquer l'antigène avec un tampon de TE buffer pH 9,0; (*) A défaut, 'le démasquage de l'antigène peut être 'effectué avec un tampon citrate pH 6,0.

Contrôles positifs:

WB : cellules HeLa,

IP : cellules HeLa,

IHC : tissu de gliome humain,

IF : cellules HeLa,

Informations générales

Asparaginase-like protein 1 (ASRGL1) is also named as ALP, CRASH and belongs to the Ntn-hydrolase family. ASRGL1 has both L-asparaginase and beta-aspartyl peptidase activity. It may be involved in the production of L-aspartate, which can act as an excitatory neurotransmitter in some brain regions. ASRGL1 has 2 isoforms produced by alternative splicing with the MW of 32 kDa and 19 kDa. Two lower molecular weight bands (23 and 15 kDa) can be detected corresponding to the processed α and β subunits (PMID: 27106100).

Publications notables

Autrice	Pubmed ID	Journal	Application
Pengfei Xu	36435763	BMC Musculoskelet Disord	WB
Yongkui Wang	33171191	Toxicol Appl Pharmacol	WB,IHC
Daniela R Chavez	34012967	Front Cell Dev Biol	IHC

Stockage

Stockage:

Stocker à -20°C. Stable pendant un an après l'expédition.

Tampon de stockage:

PBS avec azoture de sodium à 0,02 % et glycérol à 50 % pH 7,3

L'aliquotage n'est pas nécessaire pour le stockage à -20C

*** Les 20ul contiennent 0,1% de BSA.

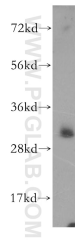
For technical support and original validation data for this product please contact:

T: 1 (888) 4PTGLAB (1-888-478-4522) (toll free in USA), or 1(312) 455-8498 (outside USA)

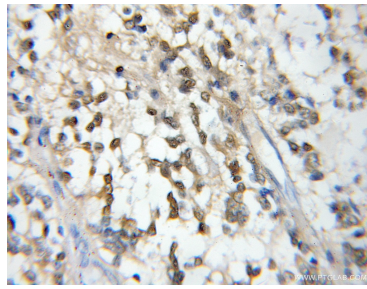
E: proteintech@ptglab.com
W: ptglab.com

This product is exclusively available under Proteintech Group brand and is not available to purchase from any other manufacturer.

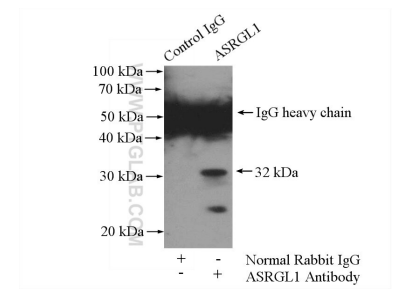
Données de validation sélectionnées



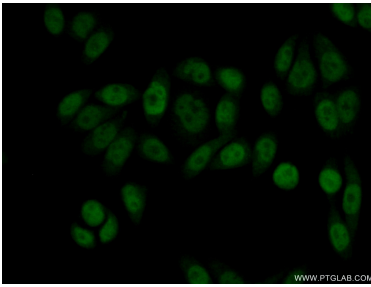
HeLa cells were subjected to SDS PAGE followed by western blot with 11400-1-AP (ASRGL1 antibody) at dilution of 1:500 incubated at room temperature for 1.5 hours.



Immunohistochemical analysis of paraffin-embedded human gliomas using 11400-1-AP (ASRGL1 antibody) at dilution of 1:50 (under 10x lens).



IP Result of anti-ASRGL1 (IP:11400-1-AP, 4ug; Detection:11400-1-AP 1:500) with HeLa cells lysate 3200ug.



Immunofluorescent analysis of (10% Formaldehyde) fixed HeLa cells using 11400-1-AP (ASRGL1 antibody) at dilution of 1:50 and Alexa Fluor 488-conjugated AffiniPure Goat Anti-Rabbit IgG(H+L).