

À des fins de recherche uniquement

# Anticorps Polyclonal de lapin anti-HSP90AB1



Numéro de catalogue: 11405-1-AP

Phare

24 Publications

## Informations de base

Numéro de catalogue:

11405-1-AP

Taille:

150ul, Concentration: 500 µg/ml by Nanodrop;

Hôte:

Lapin

Isotype:

IgG

Immunogen Catalog Number:

AG1947

Numéro d'acquisition GenBank:

BC014485

Identification du gène (NCBI):

3326

Nom complet:

heat shock protein 90kDa alpha (cytosolic), class B member 1

MW calculé

723 aa, 83 kDa

MW observés:

83-90 kDa

Méthode de purification:

Purification par affinité contre l'antigène

Dilutions recommandées:

WB 1:2000-1:10000

IP 0.5-4.0 µg for IP and 1:500-1:1000 for WB

IHC 1:250-1:1000

IF 1:10-1:100

## Applications

Applications testées:

FC, IF, IHC, IP, WB, ELISA

Demandes citées:

CoIP, IF, IHC, IP, WB

Spécificité de l'espèce:

Humain, rat, souris

Espèces citées:

Humain, porc, poulet, rat, souris

**Remarque-IHC: il est suggéré de démasquer l'antigène avec un tampon de TE buffer pH 9,0; (\*) À défaut, 'le démasquage de l'antigène peut être effectué avec un tampon citrate pH 6,0.**

Contrôles positifs:

WB : cellules PC-3, cellules HEK-293, cellules HeLa, cellules Jurkat, cellules MCF-7, tissu cardiaque de rat, tissu cardiaque de souris, tissu cérébral de rat, tissu cérébral de souris, tissu de thymus de rat, tissu de thymus de souris

IP : cellules NIH/3T3,

IHC : tissu de cancer du pancréas humain, tissu de cancer du sein humain

IF : cellules HepG2,

## Informations générales

HSP90AB1, also known as HSP90 beta, is a member of HSP90 family which includes cytosolic HSP90 alpha (HSP90AA1) and HSP90 beta, endoplasmic reticulum related GRP74, mitochondrial TRAP1. HSP90 proteins play a versatile role in cell regulation, forming complexes with a large number of cellular kinases, transcription factors, and other molecules. Upregulation of HSP90AB1 has been found in various cancers. This antibody may cross-react with HSP90AA1 due to the high homology between them.

## Publications notables

Autrice	Pubmed ID	Journal	Application
Yunxia Dong	34508810	Pharmacol Res	WB
Thomas Labadie	33075107	PLoS Pathog	IF
Shaojun Zhang	34737357	Cell Res	WB,IP

## Stockage

Stockage:

Stocker à -20°C. Stable pendant un an après l'expédition.

Tampon de stockage:

PBS avec azoture de sodium à 0,02 % et glycérol à 50 % pH 7,3

L'aliquotage n'est pas nécessaire pour le stockage à -20C

\*\*\* Les 20ul contiennent 0,1% de BSA.

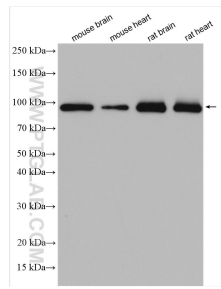
For technical support and original validation data for this product please contact:

T: 1 (888) 4PTGLAB (1-888-478-4522) (toll free in USA), or 1(312) 455-8498 (outside USA)

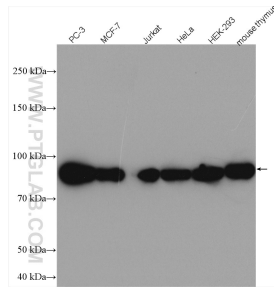
E: proteintech@ptglab.com  
W: ptglab.com

This product is exclusively available under Proteintech Group brand and is not available to purchase from any other manufacturer.

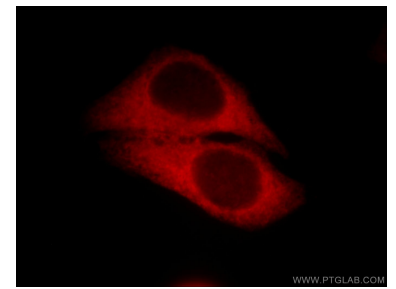
## Données de validation sélectionnées



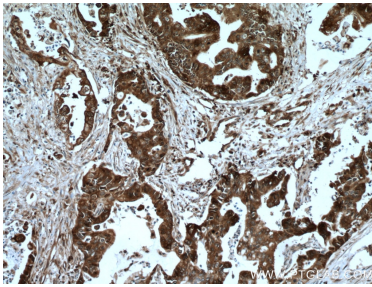
Various lysates were subjected to SDS PAGE followed by western blot with 11405-1-AP (HSP90AB1 antibody) at dilution of 1:2000 incubated at room temperature for 1.5 hours.



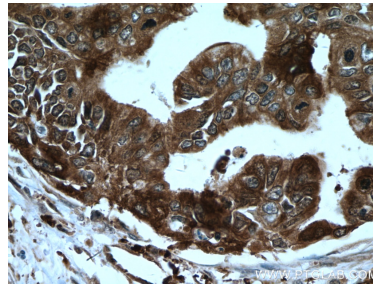
Various lysates were subjected to SDS PAGE followed by western blot with 11405-1-AP (HSP90AB1 antibody) at dilution of 1:5000 incubated at room temperature for 1.5 hours.



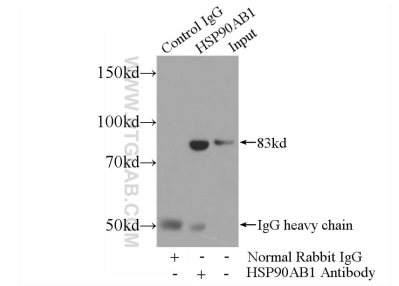
Immunofluorescent analysis of HepG2 cells, using HSP90AB1 antibody 11405-1-AP at 1:25 dilution and Rhodamine-labeled goat anti-rabbit IgG (red).



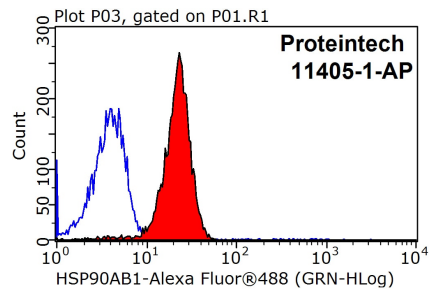
Immunohistochemical analysis of paraffin-embedded human pancreas cancer tissue slide using 11405-1-AP (HSP90AB1 antibody) at dilution of 1:500 (under 10x lens). Heat mediated antigen retrieval with Tris-EDTA buffer (pH 9.0).



Immunohistochemical analysis of paraffin-embedded human pancreas cancer tissue slide using 11405-1-AP (HSP90AB1 antibody) at dilution of 1:500 (under 40x lens). Heat mediated antigen retrieval with Tris-EDTA buffer (pH 9.0).



IP Result of anti-HSP90AB1 (IP:11405-1-AP, 4ug; Detection:11405-1-AP 1:700) with NIH/3T3 cells lysate 1200ug.



1X10<sup>6</sup> HeLa cells were stained with 0.2ug HSP90AB1 antibody (11405-1-AP, red) and control antibody (blue). Fixed with 90% MeOH blocked with 3% BSA (30 min). Alexa Fluor 488-conjugated AffiniPure Goat Anti-Rabbit IgG(H+L) with dilution 1:1500.