

À des fins de recherche uniquement

Anticorps Polyclonal de lapin anti-IL2RG



Numéro de catalogue: 11409-1-AP

Informations de base

Numéro de catalogue: 11409-1-AP	Numéro d'acquisition GenBank: BC014972	Méthode de purification: Purification par affinité contre l'antigène
Taille: 150ul, Concentration: 350 µg/ml by Nanodrop and 267 µg/ml by Bradford method using BSA as the standard;	Identification du gène (NCBI): 3561	Dilutions recommandées: WB 1:500-1:3000
Hôte: Lapin	Nom complet: interleukin 2 receptor, gamma (severe combined immunodeficiency)	
Isotype: IgG	MW calculé: 369 aa, 42 kDa	
Immunogen Catalog Number: AG1911	MW observés: 64-70 kDa	

Applications

Applications testées: FC, WB, ELISA	Contrôles positifs: WB : cellules Jurkat, cellules K-562, cellules Raji
Spécificité de l'espèce: Humain, rat, souris	

Informations générales

The interleukin-2 receptor (IL-2R) is a heterotrimeric receptor consisting of three subunits, alpha (IL2RA), beta (IL2RB), and gamma (IL2RG). IL2RG, also known as CD132, is an important signaling component of many interleukin receptors, including those of interleukin -2, -4, -7 and -21, and is thus referred to as the common gamma chain. Mutations in the gene of IL2RG cause X-linked severe combined immunodeficiency (XSCID), as well as X-linked combined immunodeficiency (XCID), a less severe immunodeficiency disorder.

Stockage

Stockage:
Stocker à -20°C. Stable pendant un an après l'expédition.
Tampon de stockage:
PBS avec azoture de sodium à 0,02 % et glycérol à 50 % pH 7,3
L'aliquotage n'est pas nécessaire pour le stockage à -20C

***** Les 20ul contiennent 0,1% de BSA.**

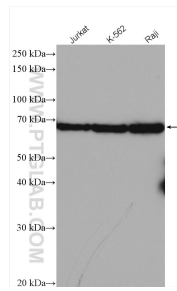
For technical support and original validation data for this product please contact:

T: 1 (888) 4PTGLAB (1-888-478-4522) (toll free in USA), or 1(312) 455-8498 (outside USA)

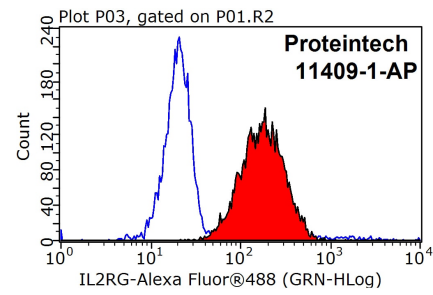
E: proteintech@ptglab.com
W: ptglab.com

This product is exclusively available under Proteintech Group brand and is not available to purchase from any other manufacturer.

Données de validation sélectionnées



Various lysates were subjected to SDS PAGE followed by western blot with 11409-1-AP (IL2RG antibody) at dilution of 1:1500 incubated at room temperature for 1.5 hours.



1×10^6 Jurkat cells were stained with 0.2ug IL2RG antibody (11409-1-AP, red) and control antibody (blue). Fixed with 90% MeOH blocked with 3% BSA (30 min). Alexa Fluor 488-conjugated AffiniPure Goat Anti-Rabbit IgG(H+L) with dilution 1:1000.