

À des fins de recherche uniquement

Anticorps Polyclonal de lapin anti-LYPD1



Numéro de catalogue: 11415-1-AP

Informations de base

Numéro de catalogue: 11415-1-AP	Numéro d'acquisition GenBank: BC017318	Méthode de purification: Purification par affinité contre l'antigène
Taille: 150ul , Concentration: 150 µg/ml by Nanodrop and 150 µg/ml by Bradford method using BSA as the standard;	Identification du gène (NCBI): 116372	Dilutions recommandées: WB 1:200-1:1000
Hôte: Lapin	Nom complet: LY6/PLAUR domain containing 1	
Isotype: IgG	MW calculé: 141 aa, 15 kDa	
Immunogen Catalog Number: AG1965	MW observés: 15 kDa	

Applications

Applications testées: WB, ELISA	Contrôles positifs: WB : tissu cérébral de souris, tissu cérébral de rat
Spécificité de l'espèce: rat, souris	

Informations générales

LY6/PLAUR domain containing 1 (LYPD1) is a highly conserved glycosylphosphatidylinositol (GPI)-anchored protein. LYPD1 contains one cysteine-rich extracellular leukocyte antigen-6 (Ly6)/uPAR (PLAUR) domain followed by signal sequence that triggers posttranslational GPI-anchor addition incorporating mature, LYPD1 into the plasma membrane. LYPD1 is believed to act as a modulator of nicotinic acetylcholine receptors (nAChRs) activity. LYPD1 increases receptor desensitization in vitro and decreases affinity for ACh of alpha-4:beta-2-containing nAChRs. LYPD1 has 4 isoforms produced by alternative splicing (PMID: 33536191).

Stockage

Stockage:
Stocker à -20°C. Stable pendant un an après l'expédition.
Tampon de stockage:
PBS avec azoture de sodium à 0,02 % et glycérol à 50 % pH 7,3
L'aliquotage n'est pas nécessaire pour le stockage à -20C

*** Les 20ul contiennent 0,1% de BSA.

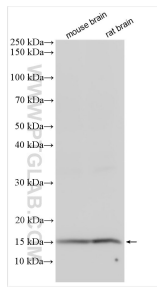
For technical support and original validation data for this product please contact:

T: 1 (888) 4PTGLAB (1-888-478-4522) (toll free in USA), or 1(312) 455-8498 (outside USA)

E: proteintech@ptglab.com
W: ptglab.com

This product is exclusively available under Proteintech Group brand and is not available to purchase from any other manufacturer.

Données de validation sélectionnées



Various lysates were subjected to SDS PAGE followed by western blot with 11415-1-AP (LYPD1 antibody) at dilution of 1:400 incubated at room temperature for 1.5 hours.