

À des fins de recherche uniquement

Anticorps Polyclonal de lapin anti-MARCKSL1



Numéro de catalogue: 11422-1-AP

1 Publications

Informations de base

Numéro de catalogue: 11422-1-AP	Numéro d'acquisition GenBank: BC007904	Méthode de purification: Purification par affinité contre l'antigène
Taille: 150ul , Concentration: 500 µg/ml by Nanodrop;	Identification du gène (NCBI): 65108	Dilutions recommandées: WB 1:500-1:1000 IHC 1:50-1:500
Hôte: Lapin	Nom complet: MARCKS-like 1	
Isotype: IgG	MW calculé: 195 aa, 20 kDa	
Immunogen Catalog Number: AG1967	MW observés: 42 kDa	

Applications

Applications testées:

IHC, WB, ELISA

Demandes citées:

WB

Spécificité de l'espèce:

Humain

Espèces citées:

souris

Contrôles positifs:

WB : tissu cérébral humain,

IHC : tissu de cancer du poumon humain, tissu de cancer du sein humain

Remarque-IHC: il est suggéré de démasquer l'antigène avec un tampon de TE buffer pH 9,0; (*) À défaut, le démasquage de l'antigène peut être effectué avec un tampon citrate pH 6,0.

Informations générales

MARCKS-like protein 1 (MARCKSL1) is widely expressed in nervous tissue, it is also named MARCKS-like protein (MLP) or MARCKS-related protein (MRP) and belongs to the MARCKS family, which is a highly acidic myristoylated family of PKC substrates widely distributed in diverse cell types including macrophages. The protein has a calculated molecular weight of 20 kDa and an apparent molecular weight of 42-48 kDa due to anomalous migration on SDS gels or phosphorylation. Genetic disruption of MARCKSL1 results in neural tube closure defects, events that depend on coordinated control of actin functions, cell shape, and cell migration. MARCKSL1 are thought to regulate the actin cytoskeleton and thereby participate in major cellular responses such as phagocytosis, secretion, motility, mitogenesis, and membrane trafficking.

Publications notables

Autrice	Pubmed ID	Journal	Application
Turtoi Andrei A	22909274	J Proteome Res	WB

Stockage

Stockage:

Stocker à -20°C. Stable pendant un an après l'expédition.

Tampon de stockage:

PBS avec azoture de sodium à 0,02 % et glycérol à 50 % pH 7,3

L'aliquotage n'est pas nécessaire pour le stockage à -20C

*** Les 20ul contiennent 0,1% de BSA.

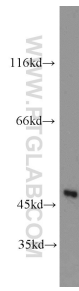
For technical support and original validation data for this product please contact:

T: 1 (888) 4PTGLAB (1-888-478-4522) (toll free in USA), or 1(312) 455-8498 (outside USA)

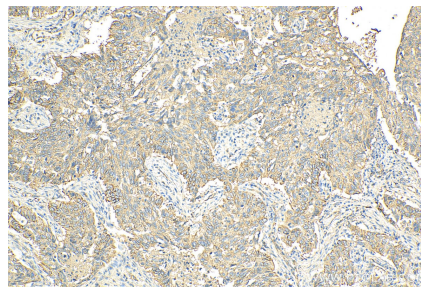
E: proteintech@ptglab.com
W: ptglab.com

This product is exclusively available under Proteintech Group brand and is not available to purchase from any other manufacturer.

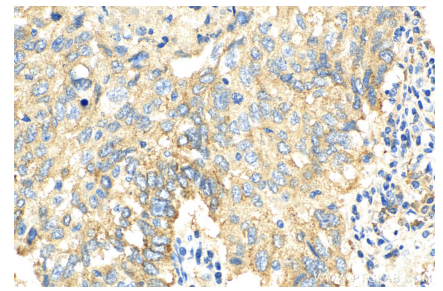
Données de validation sélectionnées



human brain tissue were subjected to SDS PAGE followed by western blot with 11422-1-AP (MARCKSL1 antibody) at dilution of 1:600 incubated at room temperature for 1.5 hours.



Immunohistochemical analysis of paraffin-embedded human lung cancer tissue slide using 11422-1-AP (MARCKSL1 antibody) at dilution of 1:200 (under 10x lens). Heat mediated antigen retrieval with Tris-EDTA buffer (pH 9.0).



Immunohistochemical analysis of paraffin-embedded human lung cancer tissue slide using 11422-1-AP (MARCKSL1 antibody) at dilution of 1:200 (under 40x lens). Heat mediated antigen retrieval with Tris-EDTA buffer (pH 9.0).