

À des fins de recherche uniquement

Anticorps Polyclonal de lapin anti-COX6B1



Numéro de catalogue: 11425-1-AP

7 Publications

Informations de base

Numéro de catalogue: 11425-1-AP	Numéro d'acquisition GenBank: BC001015	Méthode de purification: Purification par affinité contre l'antigène
Taille: 150ul , Concentration: 650 µg/ml by Nanodrop and 333 µg/ml by Bradford method using BSA as the standard;	Identification du gène (NCBI): 1340	Dilutions recommandées: WB 1:1000-1:6000 IHC 1:50-1:500 IF 1:50-1:500
Hôte: Lapin	Nom complet: cytochrome c oxidase subunit Vb polypeptide 1 (ubiquitous)	
Isotype: IgG	MW calculé 80 aa, 10 kDa	
Immunogen Catalog Number: AG1984	MW observés: 10-13 kDa	

Applications

Applications testées:

IF, IHC, WB, ELISA

Demandes citées:

WB

Spécificité de l'espèce:

Humain, rat, souris

Espèces citées:

Humain, rat

Remarque-IHC: il est suggéré de démasquer l'antigène avec un tampon de TE buffer pH 9,0; (*) A défaut, 'le démasquage de l'antigène peut être 'effectué avec un tampon citrate pH 6,0.

Contrôles positifs:

WB : cellules HL-60, cellules Caco-2, cellules HeLa, cellules HepG2

IHC : tissu de cancer du foie humain, tissu de cancer du sein humain, tissu de gliome humain

IF : cellules A431,

Informations générales

COX6B1 (Cytochrome c oxidase subunit 6B1) is also named as COX6B and belongs to the cytochrome c oxidase subunit 6B family. It connects the two COX monomers into the physiological dimeric form. Defects in COX6B1 are a cause of mitochondrial complex IV deficiency (MT-C4D).

Publications notables

Autrice	Pubmed ID	Journal	Application
Erika Fernández-Vizarra	36198313	Cell Metab	WB
Natalia Papadopoulos	29545370	J Cell Biol	WB
Neeraja Purandare	29540477	J Biol Chem	WB

Stockage

Stockage:

Stocker à -20°C. Stable pendant un an après l'expédition.

Tampon de stockage:

PBS avec azoture de sodium à 0,02 % et glycérol à 50 % pH 7,3

L'aliquotage n'est pas nécessaire pour le stockage à -20C

*** Les 20ul contiennent 0,1% de BSA.

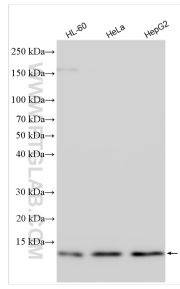
For technical support and original validation data for this product please contact:

T: 1 (888) 4PTGLAB (1-888-478-4522) (toll free in USA), or 1(312) 455-8498 (outside USA)

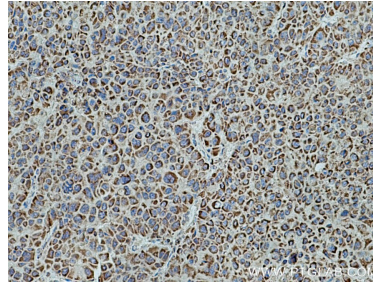
E: proteintech@ptglab.com
W: ptglab.com

This product is exclusively available under Proteintech Group brand and is not available to purchase from any other manufacturer.

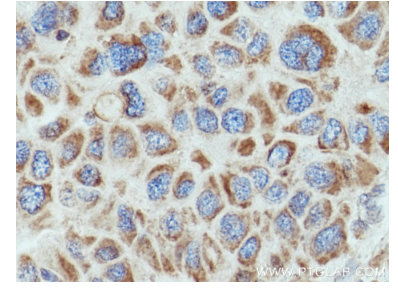
Données de validation sélectionnées



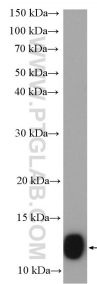
Various lysates were subjected to SDS PAGE followed by western blot with 11425-1-AP (COX6B1 antibody) at dilution of 1:3000 incubated at room temperature for 1.5 hours.



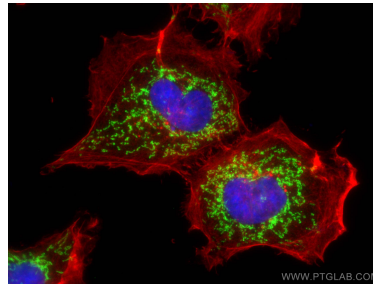
Immunohistochemical analysis of paraffin-embedded human liver cancer tissue slide using 11425-1-AP (COX6B1 antibody) at dilution of 1:200 (under 10x lens). Heat mediated antigen retrieval with Tris-EDTA buffer (pH 9.0).



Immunohistochemical analysis of paraffin-embedded human liver cancer tissue slide using 11425-1-AP (COX6B1 antibody) at dilution of 1:200 (under 40x lens). Heat mediated antigen retrieval with Tris-EDTA buffer (pH 9.0).



Caco-2 cells were subjected to SDS PAGE followed by western blot with 11425-1-AP (COX6B1 antibody) at dilution of 1:600 incubated at room temperature for 1.5 hours.



Immunofluorescent analysis of (4% PFA) fixed A431 cells using COX6B1 antibody (11425-1-AP) at dilution of 1:200 and CoraLite®488-Conjugated AffiniPure Goat Anti-Rabbit IgG(H+L), CL594-phalloidin (red).