

À des fins de recherche uniquement

Anticorps Polyclonal de lapin anti-SerpinB3/SerpinB4



Numéro de catalogue: 11428-1-AP

Informations de base

Numéro de catalogue: 11428-1-AP	Numéro d'acquisition GenBank: BC017401	Méthode de purification: Purification par affinité contre l'antigène
Taille: 150ul , Concentration: 700 µg/ml by Nanodrop and 327 µg/ml by Bradford method using BSA as the standard;	Identification du gène (NCBI): 6318	Dilutions recommandées: WB 1:500-1:2000
Hôte: Lapin	Nom complet: serpin peptidase inhibitor, clade B (ovalbumin), member 4	
Isotype: IgG	MW calculé: 390 aa, 45 kDa	
Immunogen Catalog Number: AG1964	MW observés: 42-45 kDa	

Applications

Applications testées: WB, ELISA	Contrôles positifs: WB : cellules A431, cellules COLO 320, salive humain, salive humaine
Spécificité de l'espèce: Humain	

Informations générales

Squamous cell carcinoma antigens 1 and 2 (SCCA1 and 2, SERPIN B3 and B4) are members of the ovalbumin family of serine proteinase inhibitors. SCCA1 and SCCA2 are highly homologous proteins, 91% identical at the amino acid level, and probably evolving from a common ancestor gene. The neutral form of SCCA (SCCA1, or SERPINB3) is detected in the cytoplasm of normal and some malignant squamous cells, whereas the acidic form (SCCA2, or SERPINB4) is expressed primarily in malignant cells and is the major form found in the plasma of cancer patients. SCCA2 (SERPINB4), along with SCCA1 (SERPINB3), can be processed into smaller fragments that aggregate to form an autoantigen in psoriasis, probably by causing chronic inflammation. This antibody can recognize both SerpinB3 and SerpinB4.

Stockage

Stockage:
Stocker à -20°C. Stable pendant un an après l'expédition.
Tampon de stockage:
PBS avec azoture de sodium à 0,02 % et glycérol à 50 % pH 7,3
L'aliquotage n'est pas nécessaire pour le stockage à -20C

*** Les 20ul contiennent 0,1% de BSA.

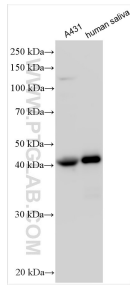
For technical support and original validation data for this product please contact:

T: 1 (888) 4PTGLAB (1-888-478-4522) (toll free in USA), or 1(312) 455-8498 (outside USA)

E: proteintech@ptglab.com
W: ptglab.com

This product is exclusively available under Proteintech Group brand and is not available to purchase from any other manufacturer.

Données de validation sélectionnées



Various lysates were subjected to SDS PAGE followed by western blot with 11428-1-AP (SERPINB4 antibody) at dilution of 1:1000 incubated at room temperature for 1.5 hours.