

À des fins de recherche uniquement

Anticorps Polyclonal de lapin anti-PRAME



Numéro de catalogue: 11438-1-AP

Informations de base

Numéro de catalogue: 11438-1-AP	Numéro d'acquisition GenBank: BC014074	Méthode de purification: Purification par affinité contre l'antigène
Taille: 150ul, Concentration: 450 µg/ml by Nanodrop;	Identification du gène (NCBI): 23532	Dilutions recommandées: WB 1:500-1:1000 IP 0.5-4.0 ug for IP and 1:200-1:1000 for WB
Hôte: Lapin	Nom complet: preferentially expressed antigen in melanoma	
Isotype: IgG	MW calculé 509 aa, 58 kDa	
Immunogen Catalog Number: AG1906	MW observés: 50-58 kDa	

Applications

Applications testées: IP, WB, ELISA	Contrôles positifs: WB : cellules K-562, IP : cellules A549,
Spécificité de l'espèce: Humain	

Informations générales

The PRAME (preferentially expressed antigen of melanoma) gene was previously shown to be overexpressed in ovarian/primary peritoneal serous carcinoma compared with malignant mesothelioma using gene expression arrays. It is considered a melanocyte differentiation antigen which is overexpressed in both solid and hematologic tumors. In normal tissue, a very low level of PRAME expression is found in normal testis, adrenals, ovary and endometrium. A high level of PRAME expression has been reported for several solid tumors, including ovarian cancer, breast cancer, lung cancer and melanomas, medulloblastoma, sarcomas, head and neck cancers, neuroblastoma, renal cancer, and Wilms'tumor. As a nuclear transcriptional repressor protein, PRAME binds to retinoic acid receptor α , thereby inhibiting retinoic acid induced differentiation, growth arrest, and apoptosis.

Stockage

Stockage:
Stocker à -20°C. Stable pendant un an après l'expédition.
Tampon de stockage:
PBS avec azote de sodium à 0,02 % et glycérol à 50 % pH 7,3
L'aliquotage n'est pas nécessaire pour le stockage à -20C

*** Les 20ul contiennent 0,1% de BSA.

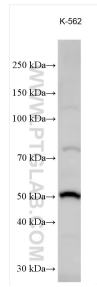
For technical support and original validation data for this product please contact:

T: 1 (888) 4PTGLAB (1-888-478-4522) (toll free in USA), or 1(312) 455-8498 (outside USA)

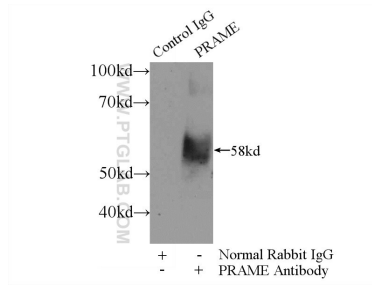
E: proteintech@ptglab.com
W: ptglab.com

This product is exclusively available under Proteintech Group brand and is not available to purchase from any other manufacturer.

Données de validation sélectionnées



K-562 cells were subjected to SDS PAGE followed by western blot with 11438-1-AP (PRAME antibody) at dilution of 1:500 incubated at room temperature for 1.5 hours.



IP Result of anti-PRAME (IP:11438-1-AP, 3ug; Detection:11438-1-AP 1:300) with A549 cells lysate 2400ug.