

À des fins de recherche uniquement

Anticorps Polyclonal de lapin anti-PNPLA3



Numéro de catalogue: 11442-1-AP

3 Publications

Informations de base

Numéro de catalogue: 11442-1-AP	Numéro d'acquisition GenBank: BC014449	Méthode de purification: Purification par affinité contre l'antigène
Taille: 150ul , Concentration: 550 µg/ml by Nanodrop;	Identification du gène (NCBI): 80339	Dilutions recommandées: WB 1:500-1:1000 IHC 1:50-1:500
Hôte: Lapin	Nom complet: patatin-like phospholipase domain containing 3	
Isotype: IgG	MW calculé 481 aa, 53 kDa	
Immunogen Catalog Number: AG1959	MW observés: 50-70 kDa, 130-150 kDa	

Applications

Applications testées: IHC, WB, ELISA	Contrôles positifs: WB : cellules L02, IHC : tissu de cancer du foie humain,
Demandes citées: WB	
Spécificité de l'espèce: Humain, souris	
Espèces citées: Humain, rat, souris	

Remarque-IHC: il est suggéré de démasquer l'antigène avec un tampon de TE buffer pH 9,0; (*) À défaut, le démasquage de l'antigène peut être effectué avec un tampon citrate pH 6,0.

Informations générales

PNPLA3 belongs to a family of proteins that share a domain that was first identified in patatin, a major soluble protein of potato tubers with nonspecific acyl hydrolase activity. The domain differs from classical lipases by employing a catalytic dyad (Ser-Asp), rather than a catalytic triad, to effect hydrolysis. PNPLA3 is expressed primarily in liver and adipose tissue, in which it partitions to membranes and lipid droplets. Real-time PCR of cDNA from human tissues indicated that PNPLA3 expression was highest in the liver, followed by skin and adipose tissue. PNPLA3 is expressed at the highest levels in adipose tissue of mice. The PNPLA3 protein was expected at 50-70 kDa, as observed; the additional band at approximately 130-150 kDa is a oligomer bands. (PMID: 20385813, PMID: 24931521, PMID: 23023705)

Publications notables

Autrice	Pubmed ID	Journal	Application
Jiesi Xu	36346641	Diabetes	WB
Qiaoli Chen	28696211	Diabetes	WB
Pan Li	35429444	Arch Biochem Biophys	WB

Stockage

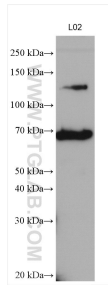
Stockage:
Stocker à -20°C. Stable pendant un an après l'expédition.
Tampon de stockage:
PBS avec azoture de sodium à 0,02 % et glycérol à 50 % pH 7,3
L'aliquotage n'est pas nécessaire pour le stockage à -20C

*** Les 20ul contiennent 0,1% de BSA.

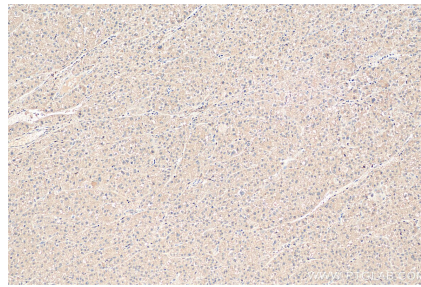
For technical support and original validation data for this product please contact:
T: 1 (888) 4PTGLAB (1-888-478-4522) (toll free in USA), or 1(312) 455-8498 (outside USA)
E: proteintech@ptglab.com
W: ptglab.com

This product is exclusively available under Proteintech Group brand and is not available to purchase from any other manufacturer.

Données de validation sélectionnées



L02 cells were subjected to SDS PAGE followed by western blot with 11442-1-AP (PNPLA3 antibody) at dilution of 1:500 incubated at room temperature for 1.5 hours.



Immunohistochemical analysis of paraffin-embedded human liver cancer tissue slide using 11442-1-AP (PNPLA3 antibody) at dilution of 1:200 (under 10x lens). Heat mediated antigen retrieval with Tris-EDTA buffer (pH 9.0).