

À des fins de recherche uniquement

# Anticorps Polyclonal de lapin anti-VCAM-1



Numéro de catalogue: 11444-1-AP

Phare

82 Publications

## Informations de base

<b>Numéro de catalogue:</b> 11444-1-AP	<b>Numéro d'acquisition GenBank:</b> BC017276	<b>Méthode de purification:</b> Purification par affinité contre l'antigène
<b>Taille:</b> 150ul , Concentration: 300 µg/ml by Nanodrop and 227 µg/ml by Bradford method using BSA as the standard;	<b>Identification du gène (NCBI):</b> 7412	<b>Dilutions recommandées:</b> WB 1:500-1:2000 IHC 1:400-1:1600
<b>Hôte:</b> Lapin	<b>Nom complet:</b> vascular cell adhesion molecule 1	
<b>Isotype:</b> IgG	<b>MW calculé:</b> 739 aa, 81 kDa	
<b>Immunogen Catalog Number:</b> AG1993	<b>MW observés:</b> 110 kDa	

## Applications

### Applications testées:

IHC, WB, ELISA

### Demandes citées:

FC, IF, IHC

### Spécificité de l'espèce:

Humain

### Espèces citées:

Humain

**Remarque-IHC: il est suggéré de démasquer l'antigène avec un tampon de TE buffer pH 9,0; (\*) A défaut, 'le démasquage de l'antigène peut être 'effectué avec un tampon citrate pH 6,0.**

### Contrôles positifs:

WB : TNF alpha treated HUVEC cells,

IHC : tissu d'amygdalite humain, tissu de cancer du poumon humain, tissu placentaire humain, tissu rénal humain, tissu splénique humain

## Informations générales

Vascular cell adhesion molecule 1 (VCAM1), also known as CD106, is a 110-kDa transmembrane glycoprotein belonging to the immunoglobulin gene superfamily. VCAM1 is expressed by cytokine-activated endothelium, interacts with integrin VLA4 ( $\alpha 4\beta 1$ ) present on the surface of leukocytes, and mediates both adhesion and signal transduction. It is also expressed either constitutively or inducibly in a variety of other cell types, including vascular smooth muscle cells, differentiating skeletal muscle cells, renal and neural epithelial cells, macrophages (Kupffer cells), dendritic cells, and bone marrow stromal cells (PMID: 7507076, 11359843).

## Publications notables

Autrice	Pubmed ID	Journal	Application
Xinyu Zhu	36103933	Eur J Pharmacol	WB
Yao Ding	34492084	PLoS Pathog	IHC
Zinan Wang	34715363	Int J Biochem Cell Biol	WB

## Stockage

### Stockage:

Stocker à -20°C. Stable pendant un an après l'expédition.

### Tampon de stockage:

PBS avec azoture de sodium à 0,02 % et glycérol à 50 % pH 7,3

L'aliquotage n'est pas nécessaire pour le stockage à -20C

\*\*\* Les 20ul contiennent 0,1% de BSA.

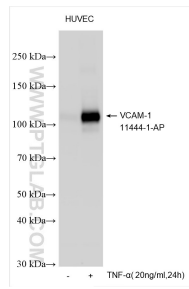
For technical support and original validation data for this product please contact:

T: 1 (888) 4PTGLAB (1-888-478-4522) (toll free in USA), or 1(312) 455-8498 (outside USA)

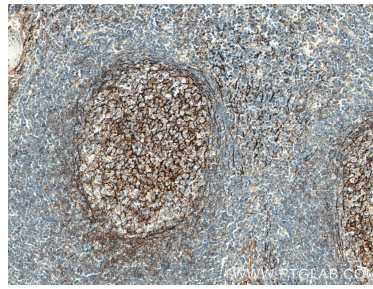
E: [proteintech@ptglab.com](mailto:proteintech@ptglab.com)  
W: [ptglab.com](http://ptglab.com)

This product is exclusively available under Proteintech Group brand and is not available to purchase from any other manufacturer.

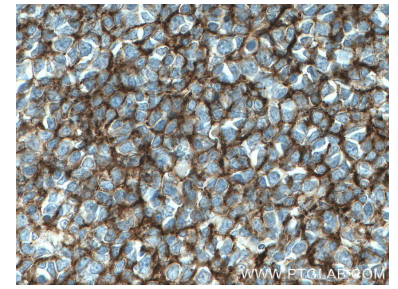
## Données de validation sélectionnées



Untreated or TNF- $\alpha$ -treated HUVEC cells were subjected to SDS PAGE followed by western blot with 11444-1-AP (VCAM-1 antibody) at dilution of 1:1000 incubated at room temperature for 1.5 hours.



Immunohistochemical analysis of paraffin-embedded human tonsillitis tissue slide using 11444-1-AP (VCAM-1 antibody) at dilution of 1:800 (under 10x lens. Heat mediated antigen retrieval with Tris-EDTA buffer (pH 9.0).



Immunohistochemical analysis of paraffin-embedded human tonsillitis tissue slide using 11444-1-AP (VCAM-1 antibody) at dilution of 1:800 (under 40x lens. Heat mediated antigen retrieval with Tris-EDTA buffer (pH 9.0).