

À des fins de recherche uniquement

Anticorps Polyclonal de lapin anti-Myozenin 2



Numéro de catalogue: 11450-1-AP

2 Publications

Informations de base

| | | |
|---|--|--|
| Numéro de catalogue: 11450-1-AP | Numéro d'acquisition GenBank: BC017402 | Méthode de purification: Purification par affinité contre l'antigène |
| Taille: 150ul, Concentration: 133 µg/ml by Nanodrop and 133 µg/ml by Bradford method using BSA as the standard; | Identification du gène (NCBI): 51778 | Dilutions recommandées: WB 1:2000-1:12000 IHC 1:50-1:500 |
| Hôte: Lapin | Nom complet: myozenin 2 | |
| Isotype: IgG | MW calculé: 30 kDa | |
| Immunogen Catalog Number: AG2008 | MW observés: 30-35 kDa | |

Applications

Applications testées:

IHC, WB, ELISA

Demandes citées:

WB

Spécificité de l'espèce:

Humain, rat, souris

Espèces citées:

rat, souris

Remarque-IHC: il est suggéré de démasquer l'antigène avec un tampon de TE buffer pH 9,0; (*) À défaut, 'le démasquage de l'antigène peut être effectué avec un tampon citrate pH 6,0.

Contrôles positifs:

WB : tissu cardiaque de souris, tissu cardiaque de rat

IHC : tissu cardiaque humain, tissu cérébral de souris

Informations générales

MYOZ2 gene encodes for the calcineurin-binding protein myozenin-2 (or Calsarcin-1) belonging to myozenin family. Defects in MYOZ2 gene are the cause of familial hypertrophic cardiomyopathy type 16 (CMH16), a hereditary heart disorder characterized by ventricular hypertrophy. The disorder has inter- and intrafamilial variability ranging from benign to malignant forms with high risk of cardiac failure and sudden cardiac death (PMID: 17347475). Myozenins may serve as intracellular binding proteins involved in linking Z line proteins such as alpha-actinin, and gamma-filamin. Important role in the modulation of calcineurin signaling and myofibrillogenesis of myozenin-2 have been elucidated (PMID: 11114196). Proteintech's Myozenin-2 antibody 11450-1-AP was raised against full-length protein of human origin and is able to detect band of approximate 34 kDa in Western blotting.

Publications notables

| Autrice | Pubmed ID | Journal | Application |
|-------------|-----------|------------|-------------|
| Jin Rong Ow | 27667720 | Sci Rep | WB |
| Li-Hui Li | 30662282 | J Pain Res | WB |

Stockage

Stockage:

Stocker à -20°C. Stable pendant un an après l'expédition.

Tampon de stockage:

PBS avec azoture de sodium à 0,02 % et glycérol à 50 % pH 7,3

L'aliquotage n'est pas nécessaire pour le stockage à -20C

*** Les 20ul contiennent 0,1% de BSA.

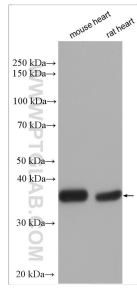
For technical support and original validation data for this product please contact:

T: 1 (888) 4PTGLAB (1-888-478-4522) (toll free in USA), or 1(312) 455-8498 (outside USA)

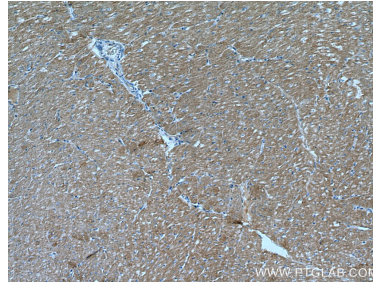
E: proteintech@ptglab.com
W: ptglab.com

This product is exclusively available under Proteintech Group brand and is not available to purchase from any other manufacturer.

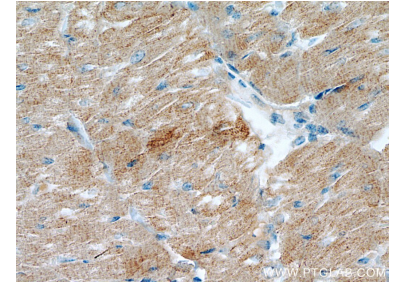
Données de validation sélectionnées



Various lysates were subjected to SDS PAGE followed by western blot with 11450-1-AP (Myozenin 2 antibody) at dilution of 1:6000 incubated at room temperature for 1.5 hours.



Immunohistochemical analysis of paraffin-embedded human heart tissue slide using 11450-1-AP (Myozenin 2 antibody) at dilution of 1:200 (under 10x Lens). Heat mediated antigen retrieval with Tris-EDTA buffer (pH 9.0).



Immunohistochemical analysis of paraffin-embedded human heart tissue slide using 11450-1-AP (Myozenin 2 antibody) at dilution of 1:200 (under 40x Lens). Heat mediated antigen retrieval with Tris-EDTA buffer (pH 9.0).