

À des fins de recherche uniquement

Anticorps Polyclonal de lapin anti-Kindlin 2



Numéro de catalogue: 11453-1-AP

Phare

25 Publications

Informations de base

Numéro de catalogue:

11453-1-AP

Taille:

150ul, Concentration: 600 µg/ml by Nanodrop;

Hôte:

Lapin

Isotype:

IgG

Immunogen Catalog Number:

AG2013

Numéro d'acquisition GenBank:

BC017327

Identification du gène (NCBI):

10979

Nom complet:

fermitin family homolog 2 (Drosophila)

MW calculé

680 aa, 78 kDa

MW observés:

78 kDa

Méthode de purification:

Purification par affinité contre l'antigène

Dilutions recommandées:

WB 1:2000-1:14000

IP 0.5-4.0 ug for IP and 1:500-1:2000 for WB

IHC 1:50-1:500

Applications

Applications testées:

IHC, IP, WB, ELISA

Demandes citées:

IF, IHC, IP, WB

Spécificité de l'espèce:

Humain, rat, souris

Espèces citées:

Humain, poisson-zèbre, rat, souris, Hamster

Remarque-IHC: il est suggéré de démasquer l'antigène avec un tampon de TE buffer pH 9,0; (*) À défaut, le démasquage de l'antigène peut être effectué avec un tampon citrate pH 6,0.

Contrôles positifs:

WB : cellules A549,

IP : cellules A549,

IHC : tissu de cancer du poumon humain,

Informations générales

FERMT2, also named as KIND2, MIG2, PLEKHC1, MIG-2 and Kindlin-2, belongs to the kindlin family. There are three FERMT2 isoforms that participate in the connection between extracellular matrix (ECM) adhesion sites and the actin cytoskeleton and also in the orchestration of actin assembly and cell shape modulation. FERMT2 recruits migfilin (FBLP1) protein to cell-ECM focal adhesion sites. Variable expression in human cancers and mesenchymal cancer invasion are now linked with FERMT2, which may play an important role in carcinomas development. Catalog#11453-1-AP is a rabbit polyclonal antibody against human FERMT2.

Publications notables

Autrice	Pubmed ID	Journal	Application
Yasmin A Kadry	30254023	J Cell Sci	WB
Jun Yu	30245857	Cell Death Discov	WB,IHC,IF
Ling Guo	33004813	Nat Commun	WB,IP

Stockage

Stockage:

Stocker à -20°C. Stable pendant un an après l'expédition.

Tampon de stockage:

PBS avec azoture de sodium à 0,02 % et glycérol à 50 % pH 7,3

L'aliquotage n'est pas nécessaire pour le stockage à -20C

*** Les 20ul contiennent 0,1% de BSA.

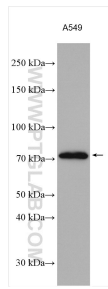
For technical support and original validation data for this product please contact:

T: 1 (888) 4PTGLAB (1-888-478-4522) (toll free in USA), or 1(312) 455-8498 (outside USA)

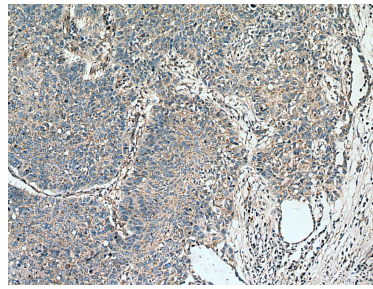
E: proteintech@ptglab.com
W: ptglab.com

This product is exclusively available under Proteintech Group brand and is not available to purchase from any other manufacturer.

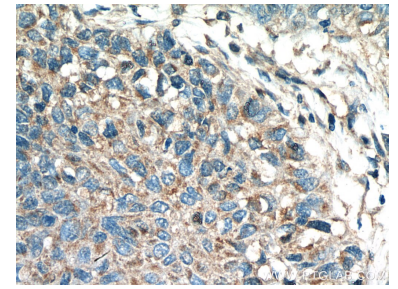
Données de validation sélectionnées



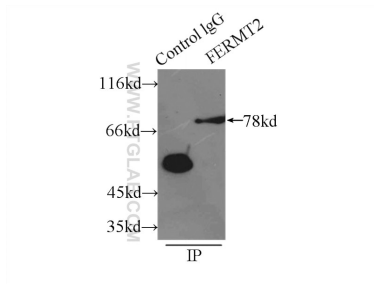
A549 cells were subjected to SDS PAGE followed by western blot with 11453-1-AP (Kindlin 2 antibody) at dilution of 1:7000 incubated at room temperature for 1.5 hours.



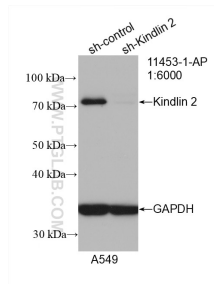
Immunohistochemical analysis of paraffin-embedded human lung cancer tissue slide using 11453-1-AP (Kindlin 2 antibody) at dilution of 1:200 (under 10x lens). Heat mediated antigen retrieval with Tris-EDTA buffer (pH 9.0).



Immunohistochemical analysis of paraffin-embedded human lung cancer tissue slide using 11453-1-AP (Kindlin 2 antibody) at dilution of 1:200 (under 40x lens). Heat mediated antigen retrieval with Tris-EDTA buffer (pH 9.0).



IP Result of anti-FERMT2 (IP:11453-1-AP, 3ug; Detection:11453-1-AP 1:1000) with A549 cells lysate 3300ug.



WB result of Kindlin 2 antibody (11453-1-AP; 1:6000; incubated at room temperature for 1.5 hours) with sh-Control and sh-Kindlin 2 transfected A549 cells.