

À des fins de recherche uniquement

Anticorps Polyclonal de lapin anti-SKIV2L



Numéro de catalogue: 11462-1-AP

Phare

11 Publications

Informations de base

Numéro de catalogue:

11462-1-AP

Taille:

150ul, Concentration: 850 µg/ml by Nanodrop;

Hôte:

Lapin

Isotype:

IgG

Immunogen Catalog Number:

AG1977

Numéro d'acquisition GenBank:

BC015758

Identification du gène (NCBI):

6499

Nom complet:

superkiller viralicidic activity 2-like (S. cerevisiae)

MW calculé

1246 aa, 138 kDa

MW observés:

138 kDa

Méthode de purification:

Purification par affinité contre l'antigène

Dilutions recommandées:

WB 1:1000-1:8000

IP 0.5-4.0 ug for IP and 1:500-1:1000 for WB

Applications

Applications testées:

IP, WB, ELISA

Demandes citées:

IF, IHC, WB

Spécificité de l'espèce:

Humain

Espèces citées:

Humain

Contrôles positifs:

WB : cellules HEK-293, cellules COLO 320, cellules HepG2, cellules Jurkat, tissu rénal humain

IP : cellules HepG2,

Informations générales

The Ski complex is a multiprotein complex required for exosome-mediated RNA surveillance, including the regulation of normal mRNA and the decay of nonfunctional mRNA. Component of the SKI complex which is thought to be involved in exosome-mediated RNA decay and associates with transcriptionally active genes in a manner dependent on PAF1 complex (PAF1C) [PMID:22444670]. SKIV2L, one component of the Ski complex, acts as an RNA helicase with a role in exosome recruitment or activation. It is involved in the degradation of RNAs by the exosome and may have a role in autophagy [PMID:11719186].

Publications notables

Autrice	Pubmed ID	Journal	Application
Katarzyna Kalisiak	28204585	Nucleic Acids Res	WB
Katarzyna Kalisiak	27679475	Nucleic Acids Res	WB
Stuart Weston	33184176	Proc Natl Acad Sci U S A	WB

Stockage

Stockage:

Stocker à -20°C. Stable pendant un an après l'expédition.

Tampon de stockage:

PBS avec azoture de sodium à 0,02 % et glycérol à 50 % pH 7,3

L'aliquotage n'est pas nécessaire pour le stockage à -20C

*** Les 20ul contiennent 0,1% de BSA.

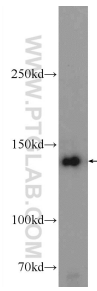
For technical support and original validation data for this product please contact:

T: 1 (888) 4PTGLAB (1-888-478-4522) (toll free in USA), or 1(312) 455-8498 (outside USA)

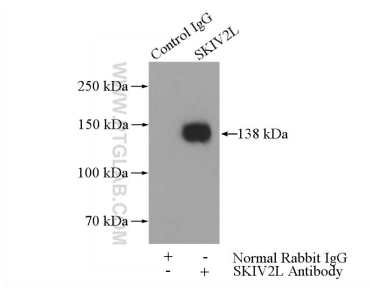
E: proteintech@ptglab.com
W: ptglab.com

This product is exclusively available under Proteintech Group brand and is not available to purchase from any other manufacturer.

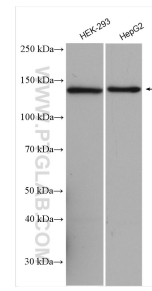
Données de validation sélectionnées



HEK-293 cells were subjected to SDS PAGE followed by western blot with 11462-1-AP (SKIV2L Antibody) at dilution of 1:600 incubated at room temperature for 1.5 hours.



IP Result of anti-SKIV2L (IP:11462-1-AP, 4ug; Detection:11462-1-AP 1:600) with HepG2 cells lysate 3200ug.



Various lysates were subjected to SDS PAGE followed by western blot with 11462-1-AP (SKIV2L antibody) at dilution of 1:4000 incubated at room temperature for 1.5 hours.