

À des fins de recherche uniquement

Anticorps Polyclonal de lapin anti-COX4I2



Numéro de catalogue: 11463-1-AP

Phare

16 Publications

Informations de base

Numéro de catalogue:
11463-1-AP

Taille:
150ul, Concentration: 850 µg/ml by Nanodrop and 333 µg/ml by Bradford method using BSA as the standard;

Hôte:
Lapin

Isotype:
IgG

Immunogen Catalog Number:
AG1987

Numéro d'acquisition GenBank:
BC057779

Identification du gène (NCBI):
84701

Nom complet:
cytochrome c oxidase subunit IV isoform 2 (lung)

MW calculé
171 aa, 20 kDa

MW observés:
17-18 kDa

Méthode de purification:
Purification par affinité contre l'antigène

Dilutions recommandées:
WB 1:500-1:3000
IP 0.5-4.0 ug for IP and 1:500-1:2000 for WB
IHC 1:20-1:200
IF 1:20-1:200

Applications

Applications testées:
IF, IHC, IP, WB, ELISA

Demandes citées:
IF, IHC, WB

Spécificité de l'espèce:
Humain, rat, souris

Espèces citées:
Humain, rat, souris

Remarque-IHC: il est suggéré de démasquer l'antigène avec un tampon de TE buffer pH 9,0; (*) A défaut, 'le démasquage de l'antigène peut être effectué avec un tampon citrate pH 6,0.

Contrôles positifs:

WB : cellules HepG2, cellules A375, cellules MCF-7, tissu cardiaque humain, tissu cérébral humain, tissu pulmonaire humain

IP : cellules HepG2,

IHC : tissu de tumeur ovarienne humain,

IF : cellules HeLa,

Informations générales

COX4I2, also named as COX4L2 and COXIV-2, belongs to the cytochrome c oxidase IV family. It is one of the nuclear-coded polypeptide chains of cytochrome c oxidase, the terminal oxidase in mitochondrial electron transport. COXIV (cytochrome c oxidase IV) has two isoforms (isoform 1 and 2). Isoform 1 (COX4I1) is ubiquitously expressed and isoform 2 is highly expressed in lung tissues. This antibody was generated against full length COX4I2 protein.

Publications notables

Autrice	Pubmed ID	Journal	Application
Yongxin Mao	36172142	Front Oncol	IHC,IF
Siddhesh Aras	27913209	Biochim Biophys Acta	WB
Guy Keller	30423473	Neurobiol Dis	IF

Stockage

Stockage:

Stocker à -20°C. Stable pendant un an après l'expédition.

Tampon de stockage:

PBS avec azoture de sodium à 0,02 % et glycérol à 50 % pH 7,3

L'aliquotage n'est pas nécessaire pour le stockage à -20C

*** Les 20ul contiennent 0,1% de BSA.

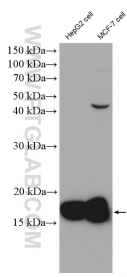
For technical support and original validation data for this product please contact:

T: 1 (888) 4PTGLAB (1-888-478-4522) (toll free in USA), or 1(312) 455-8498 (outside USA)

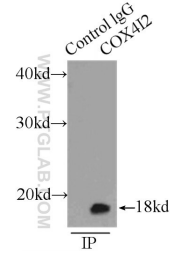
E: proteintech@ptglab.com
W: ptglab.com

This product is exclusively available under Proteintech Group brand and is not available to purchase from any other manufacturer.

Données de validation sélectionnées

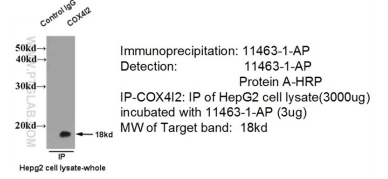


Various lysates were subjected to SDS PAGE followed by western blot with 11463-1-AP (COX4l2 antibody) at dilution of 1:1500 incubated at 4 degree celsius over night.

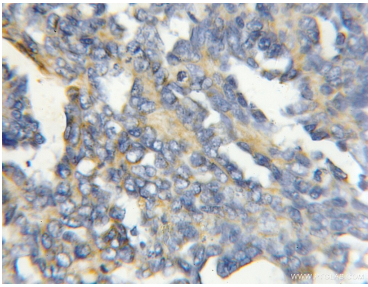


IP Result of anti-COX4l2 (IP:11463-1-AP, 3ug; Detection:11463-1-AP 1:1000) with HepG2 cells lysate 8000ug.

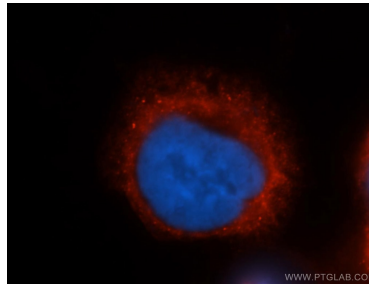
IP of 11463-1-AP with HepG2 cell



IP result of anti-COX4l2 (11463-1-AP for IP and Detection) with HepG2 cell lysate.



Immunohistochemical analysis of paraffin-embedded human ovary tumor using 11463-1-AP (COX4l2 antibody) at dilution of 1:50 (under 10x lens).



Immunofluorescent analysis of HeLa cells, using COX4l2 antibody 11463-1-AP at 1:50 dilution and Rhodamine-labeled goat anti-rabbit IgG (red). Blue pseudocolor = DAPI (fluorescent DNA dye).