

À des fins de recherche uniquement

Anticorps Polyclonal de lapin anti-MTAP



Numéro de catalogue: 11475-1-AP

Phare

25 Publications

Informations de base

Numéro de catalogue: 11475-1-AP	Numéro d'acquisition GenBank: BC018625	Méthode de purification: Purification par affinité contre l'antigène
Taille: 150ul , Concentration: 450 µg/ml by Nanodrop;	Identification du gène (NCBI): 4507	Dilutions recommandées: WB 1:2000-1:12000 IHC 1:20-1:200 IF 1:50-1:500
Hôte: Lapin	Nom complet: methylthioadenosine phosphorylase	
Isotype: IgG	MW calculé: 283 aa, 31 kDa	
Immunogen Catalog Number: AG2051	MW observés: 31 kDa	

Applications

Applications testées:
IF, IHC, WB, ELISA

Demandes citées:
IHC, WB

Spécificité de l'espèce:
Humain, rat, souris

Espèces citées:
Humain, rat

Contrôles positifs:

WB : cellules HEK-293, cellules C6, cellules HeLa, cellules HT-29, cellules NIH/3T3, cellules Raji, tissu cardiaque de souris, tissu cardiaque humain

IHC : tissu de cancer du côlon humain,

IF : cellules NIH/3T3,

Remarque-IHC: il est suggéré de démasquer l'antigène avec un tampon de TE buffer pH 9,0; (*) À défaut, le démasquage de l'antigène peut être effectué avec un tampon citrate pH 6,0.

Informations générales

MTAP is a 5-deoxy-5-methylthioadenosine (MTA) phosphorylase, converting MTA to salvageable intermediates including adenine and 5-methylthioribose-1-phosphate. MTAP is abundant in normal cells, but it is frequently found to be deleted in a variety of cancers. Its deficiency is common in cancer cell lines as well as in primary leukemia, lung cancer, melanoma, bladder cancer, gliomas and breast cancer.

Publications notables

Autrice	Pubmed ID	Journal	Application
Lusia Sepiashvili	25271301	Mol Cell Proteomics	IHC
Chidlow Glyn G	24069379	PLoS One	WB,IHC
Jianying Guo	31477750	Sci Rep	WB

Stockage

Stockage:

Stocker à -20°C. Stable pendant un an après l'expédition.

Tampon de stockage:

PBS avec azoture de sodium à 0,02 % et glycérol à 50 % pH 7,3

L'aliquotage n'est pas nécessaire pour le stockage à -20C

*** Les 20ul contiennent 0,1% de BSA.

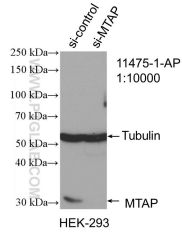
For technical support and original validation data for this product please contact:

T: 1 (888) 4PTGLAB (1-888-478-4522) (toll free in USA), or 1(312) 455-8498 (outside USA)

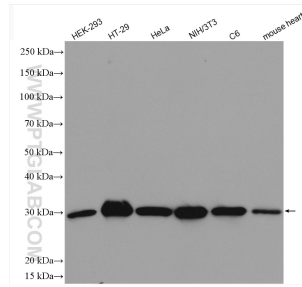
E: proteintech@ptglab.com
W: ptglab.com

This product is exclusively available under Proteintech Group brand and is not available to purchase from any other manufacturer.

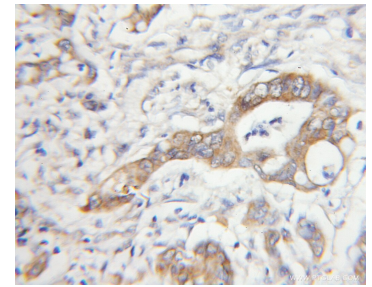
Données de validation sélectionnées



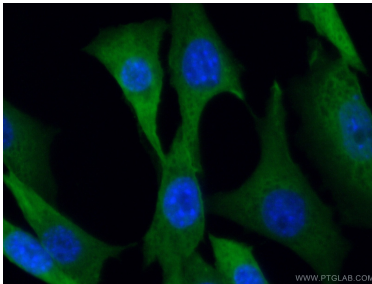
WB result of MTAP antibody (11475-1-AP; 1:10000; incubated at room temperature for 1.5 hours) with sh-Control and sh-MTAP transfected HEK-293 cells.



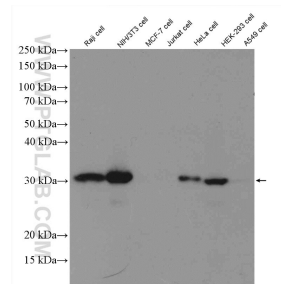
Various lysates were subjected to SDS PAGE followed by western blot with 11475-1-AP (MTAP antibody) at dilution of 1:6000 incubated at room temperature for 1.5 hours.



Immunohistochemical analysis of paraffin-embedded human colon cancer using 11475-1-AP (MTAP antibody) at dilution of 1:50 (under 10x lens).



Immunofluorescent analysis of (4% PFA) fixed NIH/3T3 cells using 11475-1-AP (MTAP antibody) at dilution of 1:50 and Alexa Fluor 488-conjugated AffiniPure Goat Anti-Rabbit IgG(H+L).



Various lysates from MTAP-expressing cells (Raji, NIH3T3, HeLa, and HEK293) and MTAP deficient cells (MCF7 and A549) were subjected to SDS PAGE followed by western blot with 11475-1-AP (MTAP antibody) at dilution of 1:2000 incubated at room temperature for 1.5 hours.