

À des fins de recherche uniquement

Anticorps Polyclonal de lapin anti-APOL1



Numéro de catalogue: 11486-2-AP

Phare

22 Publications

Informations de base

Numéro de catalogue:

11486-2-AP

Taille:

150ul, Concentration: 500 µg/ml by Nanodrop;

Hôte:

Lapin

Isotype:

IgG

Immunogen Catalog Number:

AG2016

Numéro d'acquisition GenBank:

BC017331

Identification du gène (NCBI):

8542

Nom complet:

apolipoprotein L, 1

MW calculé

44 kDa

MW observés:

39 kDa

Méthode de purification:

Purification par affinité contre l'antigène

Dilutions recommandées:

WB 1:500-1:1000

IP 0.5-4.0 ug for IP and 1:500-1:1000 for WB

IHC 1:50-1:4000

IF 1:10-1:100

Applications

Applications testées:

FC, IF, IHC, IP, WB, ELISA

Demandes citées:

IF, IHC, IP, WB

Spécificité de l'espèce:

Humain

Espèces citées:

Humain, souris

Remarque-IHC: il est suggéré de démasquer l'antigène avec un tampon de TE buffer pH 9,0; (*) À défaut, le démasquage de l'antigène peut être effectué avec un tampon citrate pH 6,0.

Contrôles positifs:

WB : tissu sanguin humain, cellules A2780, cellules A549, cellules HeLa, cellules HepG2, cellules MCF-7, cellules SKOV-3, cellules SW-1990, tissu plasmatique humain

IP : cellules HepG2, tissu plasmatique humain

IHC : tissu rénal humain, tissu hépatique humain, tissu pancréatique humain, tissu rénal de souris, tissu splénique humain, tissu testiculaire humain

IF : cellules HepG2,

Informations générales

Human apolipo-protein L1 (APOL1) is a minor component of plasma high density lipoprotein (HDL) particles, acting as an interacting protein of apolipoprotein A1 (ApoA1). The human ApoL protein family was thought to be predominantly involved in lipid transport and metabolism. APOL1 is also involved in host innate immunity against Trypanosoma parasites. Once activated, APOL1 can lyse the parasite and protect human from infection. Genetic variants in APOL1 gene, which are found in African ancestry with high frequency, associate with chronic kidney disease, like focal segmental glomerulosclerosis (FSGS), HIV-associated nephropathy (HIVAN), and hypertensive nephropathy. APOL1 share structural and functional similarities with proteins of the Bcl-2 family and may has roles in apoptosis and autophagy. It is notable that APOL1 exists only in human and a few other primate species, and mouse does not express an APOL1 orthologue. This antibody recognizes the endogenous APOL1 of 39-45 kDa in blood lysate.

Publications notables

Autrice	Pubmed ID	Journal	Application
Jyoti Pant	34559857	PLoS Pathog	WB
David H Vanderpe	36449077	Pflugers Arch	IF
Xiaohui Liu	29123261	Br J Cancer	IHC

Stockage

Stockage:

Stocker à -20°C. Stable pendant un an après l'expédition.

Tampon de stockage:

PBS avec azoture de sodium à 0,02 % et glycérol à 50 % pH 7,3

L'aliquotage n'est pas nécessaire pour le stockage à -20C

*** Les 20ul contiennent 0,1% de BSA.

For technical support and original validation data for this product please contact:

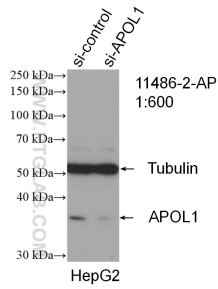
T: 1 (888) 4PTGLAB (1-888-478-4522) (toll free in USA), or 1(312) 455-8498 (outside USA)

E: proteintech@ptglab.com

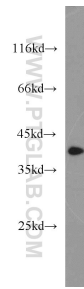
W: ptglab.com

This product is exclusively available under Proteintech Group brand and is not available to purchase from any other manufacturer.

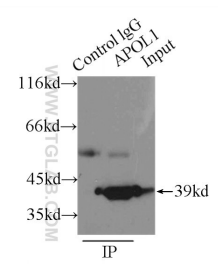
Données de validation sélectionnées



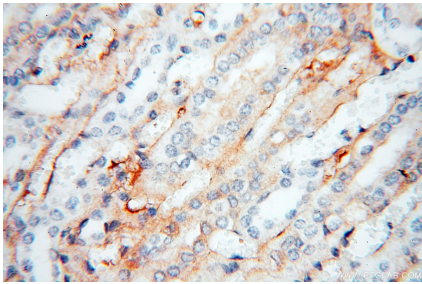
WB result of APOL1 antibody (11486-2-AP; 1:600; incubated at room temperature for 1.5 hours) with sh-Control and sh-APOL1 transfected HepG2 cells.



human blood were subjected to SDS PAGE followed by western blot with 11486-2-AP (APOL1 antibody) at dilution of 1:1000 incubated at room temperature for 1.5 hours.



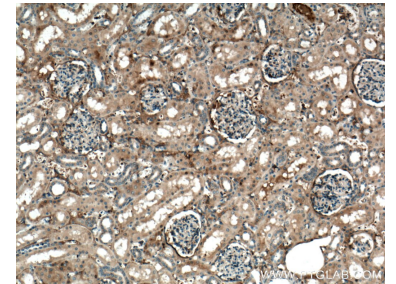
IP Result of anti-APOL1 (IP:11486-2-AP, 3ug; Detection:11486-2-AP 1:500) with HepG2 cells lysate 6000ug.



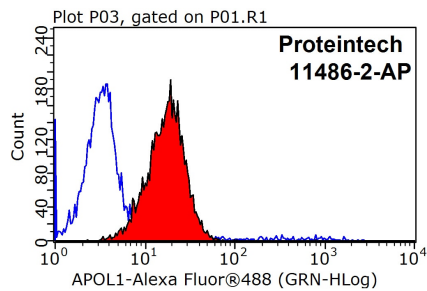
Immunohistochemical analysis of paraffin-embedded human kidney using 11486-2-AP (APOL1 antibody) at dilution of 1:50 (under 40x lens).



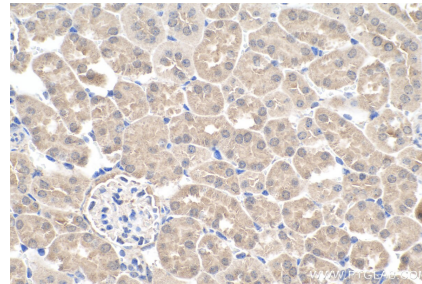
Immunofluorescent analysis of () fixed HepG2 cells using 11486-2-AP (APOL1 antibody) at dilution of 1:25.



Immunohistochemical analysis of paraffin-embedded human kidney tissue slide using 11486-2-AP (APOL1 antibody) at dilution of 1:200 (under 10x lens. Heat mediated antigen retrieval with Tris-EDTA buffer (pH 9.0).



1X10⁶ HepG2 cells were stained with 0.2ug APOL1 antibody (11486-2-AP, red) and control antibody (blue). Fixed with 90% MeOH blocked with 3% BSA (30 min). Alexa Fluor 488-conjugated AffiniPure Goat Anti-Rabbit IgG(H+L) with dilution 1:1000.



Immunohistochemical analysis of paraffin-embedded mouse kidney tissue slide using 11486-2-AP (APOL1 antibody) at dilution of 1:4000 (under 40x lens). Heat mediated antigen retrieval with Tris-EDTA buffer (pH 9.0).