

À des fins de recherche uniquement

# Anticorps Polyclonal de lapin anti-FGF18



Numéro de catalogue: 11495-1-AP

3 Publications

## Informations de base

Numéro de catalogue:  
11495-1-AP

Taille:  
150ul, Concentration: 300 µg/ml by  
Nanodrop;

Hôte:  
Lapin

Isotype:  
IgG

Immunogen Catalog Number:  
AG2041

Numéro d'acquisition GenBank:  
BC006245

Identification du gène (NCBI):  
8817

Nom complet:  
fibroblast growth factor 18

MW calculé  
207 aa, 24 kDa

Méthode de purification:  
Purification par affinité contre  
l'antigène

Dilutions recommandées:  
IHC 1:50-1:500  
IF 1:20-1:200

## Applications

Applications testées:  
IF, IHC, ELISA

Demandes citées:  
IF, IHC, WB

Spécificité de l'espèce:  
Humain, souris

Espèces citées:  
Humain, souris

Contrôles positifs:

IHC : tissu rénal de souris, tissu cardiaque de souris,  
tissu embryonnaire de souris

IF : cellules HepG2,

**Remarque-IHC: il est suggéré de démasquer l'antigène avec un tampon de TE buffer pH 9,0; (\*) À défaut, le démasquage de l'antigène peut être effectué avec un tampon citrate pH 6,0.**

## Informations générales

FGF18 is a member of the fibroblast growth factor (FGF) family. FGF family members possess broad mitogenic and cell survival activities, and are involved in a variety of biological processes, including embryonic development, cell growth, morphogenesis, tissue repair, tumor growth, and invasion. It has been shown in vitro that this protein is able to induce neurite outgrowth in PC12 cells. Studies of the similar proteins in mouse and chick suggested that this protein is a pleiotropic growth factor that stimulates proliferation in a number of tissues, most notably the liver and small intestine. Knockout studies of the similar gene in mice implied the role of this protein in regulating proliferation and differentiation of midline cerebellar structures.

## Publications notables

Autrice	Pubmed ID	Journal	Application
Keke Guo	36388783	Ann Transl Med	WB, IF
Kai Guo	35277183	J Exp Clin Cancer Res	IHC
Jungang Zhao	34305588	Front Pharmacol	WB, IHC

## Stockage

Stockage:

Stocker à -20°C. Stable pendant un an après l'expédition.

Tampon de stockage:

PBS avec azoture de sodium à 0,02 % et glycérol à 50 % pH 7,3

L'aliquotage n'est pas nécessaire pour le stockage à -20C

\*\*\* Les 20ul contiennent 0,1% de BSA.

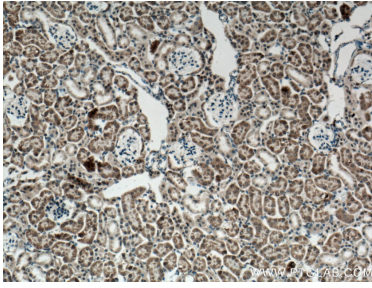
For technical support and original validation data for this product please contact:

T: 1 (888) 4PTGLAB (1-888-478-4522) (toll free  
in USA), or 1(312) 455-8498 (outside USA)

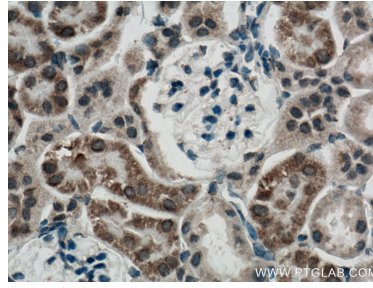
E: proteintech@ptglab.com  
W: ptglab.com

This product is exclusively available under Proteintech Group brand and is not available to purchase from any other manufacturer.

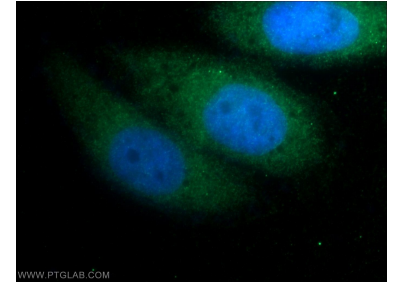
## Données de validation sélectionnées



Immunohistochemical analysis of paraffin-embedded mouse kidney tissue slide using 11495-1-AP (FGF18 antibody) at dilution of 1:200 (under 10x lens). Heat mediated antigen retrieval with Tris-EDTA buffer (pH 9.0).



Immunohistochemical analysis of paraffin-embedded mouse kidney tissue slide using 11495-1-AP (FGF18 antibody) at dilution of 1:200 (under 40x lens). Heat mediated antigen retrieval with Tris-EDTA buffer (pH 9.0).



Immunofluorescent analysis of HepG2 cells using 11495-1-AP (FGF18 antibody) at dilution of 1:50 and Alexa Fluor 488-conjugated AffiniPure Goat Anti-Rabbit IgG(H+L).