

À des fins de recherche uniquement

Anticorps Polyclonal de lapin anti-FBXW2



Numéro de catalogue: 11499-1-AP

Phare

5 Publications

Informations de base

Numéro de catalogue: 11499-1-AP	Numéro d'acquisition GenBank: BC018738	Méthode de purification: Purification par affinité contre l'antigène
Taille: 150ul, Concentration: 300 µg/ml by Nanodrop and 200 µg/ml by Bradford method using BSA as the standard;	Identification du gène (NCBI): 26190	Dilutions recommandées: WB 1:500-1:1000 IHC 1:50-1:500
Hôte: Lapin	Nom complet: F-box and WD repeat domain containing 2	
Isotype: IgG	MW calculé 44 kDa, 52 kDa	
Immunogen Catalog Number: AG2045	MW observés: 52 kDa, 43 kDa	

Applications

Applications testées: IHC, WB, ELISA	Contrôles positifs: WB : cellules HEK-293, IHC : tissu de cancer du côlon humain,
Demandes citées: IHC, IP, WB	
Spécificité de l'espèce: Humain, rat, souris	
Espèces citées: Humain	

Remarque-IHC: il est suggéré de démasquer l'antigène avec un tampon de TE buffer pH 9,0; (*) A défaut, 'le démasquage de l'antigène peut être effectué avec un tampon citrate pH 6,0.

Informations générales

The human FBW2 polypeptide contains an N-terminal F-box motif and a C-terminal domain of five WD repeats. A WD repeat is a motif typically consisting of 44-60 amino acids with a signature tryptophan and aspartic acid dipeptide at its C-terminus. The WD repeats in FBW2 recognize GCM1 in a way that is facilitated by GSK3b. Two isoforms were produced by alternative splicing with predicted MW of 52 and 43 kDa according to UniProt, and Catalog#11499-1-AP can recognise both.

Publications notables

Autrice	Pubmed ID	Journal	Application
Shunjie Xia	33962073	Cell Mol Gastroenterol Hepatol	WB
Tao Zhou	35499593	Cell Mol Life Sci	WB
Fei Yang	30918250	Nat Commun	WB, IHC

Stockage

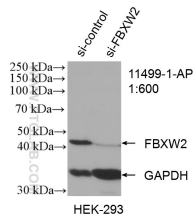
Stockage:
Stocker à -20°C. Stable pendant un an après l'expédition.
Tampon de stockage:
PBS avec azoture de sodium à 0,02 % et glycérol à 50 % pH 7,3
L'aliquotage n'est pas nécessaire pour le stockage à -20C

*** Les 20ul contiennent 0,1% de BSA.

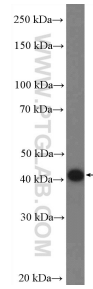
For technical support and original validation data for this product please contact:
T: 1 (888) 4PTGLAB (1-888-478-4522) (toll free in USA), or 1(312) 455-8498 (outside USA)
E: proteintech@ptglab.com
W: ptglab.com

This product is exclusively available under Proteintech Group brand and is not available to purchase from any other manufacturer.

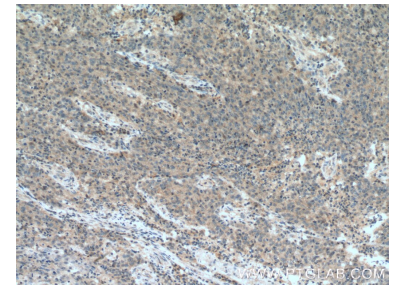
Données de validation sélectionnées



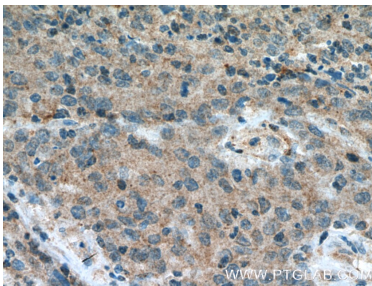
WB result of FBXW2 antibody (11499-1-AP; 1:600; incubated at room temperature for 1.5 hours) with sh-Control and sh-FBXW2 transfected HEK-293 cells.



HEK-293 cells were subjected to SDS PAGE followed by western blot with 11499-1-AP (FBXW2 Antibody) at dilution of 1:600 incubated at room temperature for 1.5 hours.



Immunohistochemical analysis of paraffin-embedded human colon cancer tissue slide using 11499-1-AP (FBXW2 Antibody) at dilution of 1:200 (under 10x lens). Heat mediated antigen retrieval with Tris-EDTA buffer (pH 9.0).



Immunohistochemical analysis of paraffin-embedded human colon cancer tissue slide using 11499-1-AP (FBXW2 Antibody) at dilution of 1:200 (under 40x lens). Heat mediated antigen retrieval with Tris-EDTA buffer (pH 9.0).