

À des fins de recherche uniquement

Anticorps Polyclonal de lapin anti-ASGR2



Numéro de catalogue: 11501-2-AP

Informations de base

Numéro de catalogue:
11501-2-AP

Taille:
150ul, Concentration: 550 µg/ml by Nanodrop and 227 µg/ml by Bradford method using BSA as the standard;

Hôte:
Lapin

Isotype:
IgG

Immunogen Catalog Number:
AG2037

Numéro d'acquisition GenBank:
BC017251

Identification du gène (NCBI):
433

Nom complet:
asialoglycoprotein receptor 2

MW calculé
39 kDa

MW observés:
39 kDa

Méthode de purification:
Purification par affinité contre l'antigène

Dilutions recommandées:
WB 1:200-1:1000
IP 0.5-4.0 ug for IP and 1:200-1:1000 for WB
IHC 1:50-1:500

Applications

Applications testées:
FC, IHC, IP, WB, ELISA

Spécificité de l'espèce:
Humain

Remarque-IHC: il est suggéré de démasquer l'antigène avec un tampon de TE buffer pH 9.0; (*) À défaut, le démasquage de l'antigène peut être effectué avec un tampon citrate pH 6.0.

Contrôles positifs:

WB : tissu hépatique humain,

IP : cellules L02,

IHC : tissu hépatique humain,

Informations générales

Asialoglycoprotein receptor (ASGPR), also known as the hepatic galactose/N-acetylglucosamine (GlcNAc) receptor or Ashwell receptor, is a C-type lectin expressed exclusively in hepatic parenchymal cells. ASGPR consists of two subunits, a major subunit (ASGR1, HL-1) and a minor subunit (ASGR2, HL-2), and specifically recognizes terminal β -linked galactose or GlcNAc on circulating glycoproteins or cells. This receptor plays a critical role in serum glycoprotein homeostasis by mediating the endocytosis and lysosomal degradation of glycoproteins that contain terminal galactose or GlcNAc residues. ASGPR may facilitate hepatic infection by multiple viruses including hepatitis B, and is also a target for liver-specific drug delivery.

Stockage

Stockage:

Stocker à -20°C. Stable pendant un an après l'expédition.

Tampon de stockage:

PBS avec azoture de sodium à 0,02 % et glycérol à 50 % pH 7,3

L'aliquotage n'est pas nécessaire pour le stockage à -20C

*** Les 20ul contiennent 0,1% de BSA.

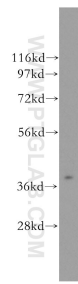
For technical support and original validation data for this product please contact:

T: 1 (888) 4PTGLAB (1-888-478-4522) (toll free in USA), or 1(312) 455-8498 (outside USA)

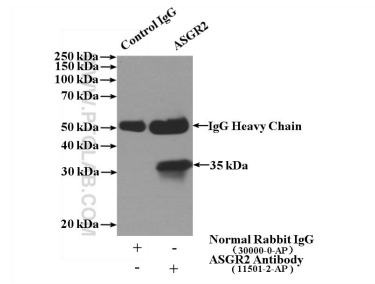
E: proteintech@ptglab.com
W: ptglab.com

This product is exclusively available under Proteintech Group brand and is not available to purchase from any other manufacturer.

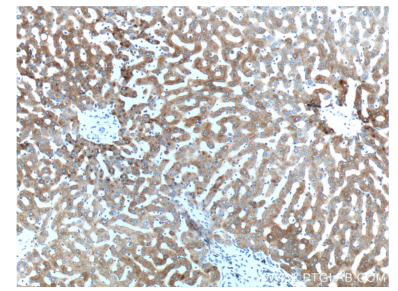
Données de validation sélectionnées



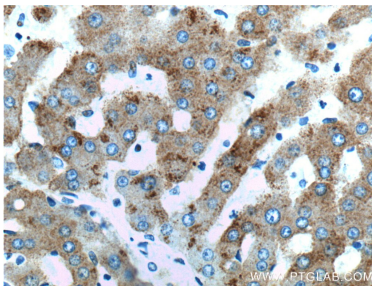
human liver tissue were subjected to SDS PAGE followed by western blot with 11501-2-AP (ASGR2 antibody) at dilution of 1:400 incubated at room temperature for 1.5 hours.



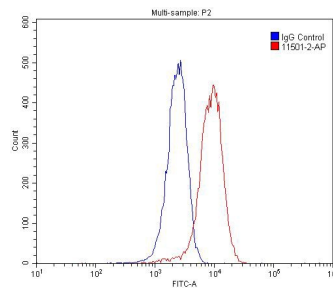
IP Result of anti-ASGR2 (IP:11501-2-AP, 4ug; Detection:11501-2-AP 1:300) with L02 cells lysate 1800ug.



Immunohistochemical analysis of paraffin-embedded human liver tissue slide using 11501-2-AP (ASGR2 Antibody) at dilution of 1:200 (under 10x lens).



Immunohistochemical analysis of paraffin-embedded human liver tissue slide using 11501-2-AP (ASGR2 Antibody) at dilution of 1:200 (under 40x lens).



1x10⁶ HepG2 cells were stained with 0.2ug ASGR2 antibody (11501-2-AP, red) and control antibody (blue). Fixed with 4% PFA blocked with 3% BSA (30 min). Alexa Fluor 488-conjugated AffiniPure Goat Anti-Rabbit IgG(H+L) with dilution 1:1500.