

À des fins de recherche uniquement

Anticorps Polyclonal de lapin anti-SP110



Numéro de catalogue: 11502-1-AP

1 Publications

Informations de base

Numéro de catalogue:

11502-1-AP

Taille:

150ul, Concentration: 350 µg/ml by Nanodrop;

Hôte:

Lapin

Isotype:

IgG

Immunogen Catalog Number:

AG2042

Numéro d'acquisition GenBank:

BC019059

Identification du gène (NCBI):

3431

Nom complet:

SP110 nuclear body protein

MW calculé

689 aa, 79 kDa

MW observés:

62-66 kDa

Méthode de purification:

Purification par affinité contre l'antigène

Dilutions recommandées:

WB 1:2000-1:12000

IP 0.5-4.0 ug for IP and 1:500-1:1000 for WB

Applications

Applications testées:

FC, IP, WB, ELISA

Demandes citées:

FC, IF, WB

Spécificité de l'espèce:

Humain, souris

Espèces citées:

Humain

Contrôles positifs:

WB : cellules A2780, cellules COLO 320, cellules HeLa, cellules Jurkat, cellules K-562, cellules PC-3, tissu cérébral humain, tissu testiculaire humain

IP : cellules HeLa,

Informations générales

Publications notables

Autrice	Pubmed ID	Journal	Application
Florian A Marquardsen	28825155	J Clin Immunol	WB,IF,FC

Stockage

Stockage:

Stocker à -20°C. Stable pendant un an après l'expédition.

Tampon de stockage:

PBS avec azoture de sodium à 0,02 % et glycérol à 50 % pH 7,3

L'aliquotage n'est pas nécessaire pour le stockage à -20C

*** Les 20ul contiennent 0,1% de BSA.

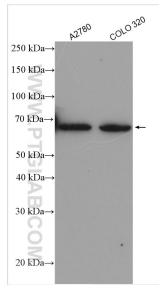
For technical support and original validation data for this product please contact:

T: 1 (888) 4PTGLAB (1-888-478-4522) (toll free in USA), or 1(312) 455-8498 (outside USA)

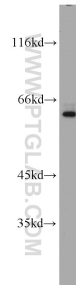
E: proteintech@ptglab.com
W: ptglab.com

This product is exclusively available under Proteintech Group brand and is not available to purchase from any other manufacturer.

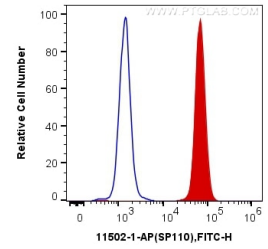
Données de validation sélectionnées



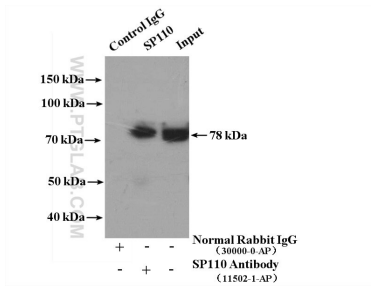
Various lysates were subjected to SDS PAGE followed by western blot with 11502-1-AP (SP110 antibody) at dilution of 1:6000 incubated at room temperature for 1.5 hours.



HeLa cells were subjected to SDS PAGE followed by western blot with 11502-1-AP (SP110 antibody) at dilution of 1:800 incubated at room temperature for 1.5 hours.



1×10^6 Jurkat cells were intracellularly stained with 0.2 ug Anti-Human SP110 (11502-1-AP) and CoraLite@488-Conjugated AffiniPure Goat Anti-Rabbit IgG(H+L) at dilution 1:1000 (red), or 0.2 ug Control Antibody. Cells were fixed and permeabilized with Transcription Factor Staining Buffer Kit (PF00011).



IP Result of anti-SP110 (IP:11502-1-AP, 4ug; Detection:11502-1-AP 1:800) with HeLa cells lysate 4000ug.