

À des fins de recherche uniquement

# Anticorps Polyclonal de lapin anti-FRS2



Numéro de catalogue: 11503-1-AP

Phare

7 Publications

## Informations de base

Numéro de catalogue: 11503-1-AP	Numéro d'acquisition GenBank: BC021562	Méthode de purification: Purification par affinité contre l'antigène
Taille: 150ul , Concentration: 1400 µg/ml by Nanodrop and 600 µg/ml by Bradford method using BSA as the standard;	Identification du gène (NCBI): 10818	Dilutions recommandées: WB 1:1000-1:4000 IHC 1:20-1:200 IF 1:10-1:100
Hôte: Lapin	Nom complet: fibroblast growth factor receptor substrate 2	
Isotype: IgG	MW calculé: 60 kDa	
Immunogen Catalog Number: AG2052	MW observés: 68 kDa	

## Applications

### Applications testées:

IF, IHC, WB, ELISA

### Demandes citées:

IHC, WB

### Spécificité de l'espèce:

Humain, rat, souris

### Espèces citées:

Humain, souris

**Remarque-IHC: il est suggéré de démasquer l'antigène avec un tampon de TE buffer pH 9,0; (\*) A défaut, 'le démasquage de l'antigène peut être 'effectué avec un tampon citrate pH 6,0.**

### Contrôles positifs:

WB : cellules HeLa, cellules NIH/3T3, cellules PC-3, cellules SH-SY5Y, tissu cérébral humain

IHC : tissu de cancer de la prostate humain,

IF : cellules MCF-7,

## Informations générales

Fibroblast growth factor (FGF) receptor substrate 2 (FRS2) has an alternative name as SNT-1, it is an adaptor protein that links activated FGR and NGF receptors to downstream signaling pathways. FGF receptor substrates (FRS2 and FRS3) are key adaptor proteins that mediate FGF-FGFR signalling in benign as well as malignant tissue. FRS2 is a 508 amino-acid protein, which is phosphorylated on tyrosine residues. The molecular weight of non-phosphorylated FRS2 is 57-68 kDa, but phosphorylated FRS2 is 80-90 kDa. Phosphorylation of FRS2 is associated with activation of a number of MAP kinases. Allele-specific regulation of FGFR2 mRNA expression with a mildly increased breast cancer risk has been reported.

## Publications notables

Autrice	Pubmed ID	Journal	Application
Wang Xiaoke X	21793095	Genes Chromosomes Cancer	WB
Min Shao	35271262	J Med Chem	WB
Silvana Mouron	33579347	Breast Cancer Res	WB

## Stockage

### Stockage:

Stocker à -20°C. Stable pendant un an après l'expédition.

### Tampon de stockage:

PBS avec azoture de sodium à 0,02 % et glycérol à 50 % pH 7,3

L'aliquotage n'est pas nécessaire pour le stockage à -20C

\*\*\* Les 20ul contiennent 0,1% de BSA.

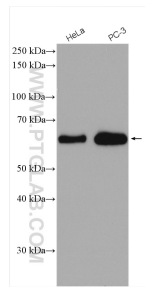
For technical support and original validation data for this product please contact:

T: 1 (888) 4PTGLAB (1-888-478-4522) (toll free in USA), or 1(312) 455-8498 (outside USA)

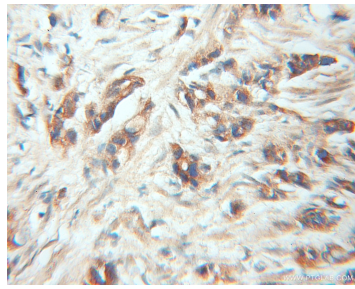
E: proteintech@ptglab.com  
W: ptglab.com

This product is exclusively available under Proteintech Group brand and is not available to purchase from any other manufacturer.

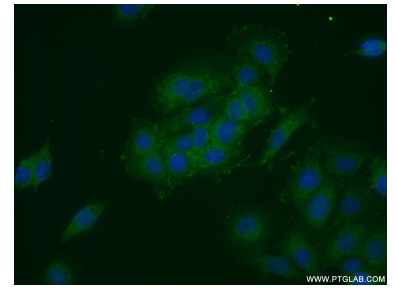
## Données de validation sélectionnées



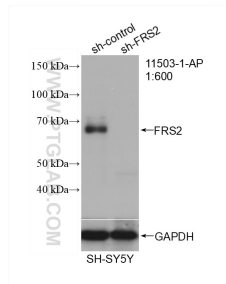
Various lysates were subjected to SDS PAGE followed by western blot with 11503-1-AP (FRS2 antibody) at dilution of 1:2000 incubated at room temperature for 1.5 hours.



Immunohistochemical analysis of paraffin-embedded human prostate cancer using 11503-1-AP (FRS2 antibody) at dilution of 1:50 (under 10x lens).



Immunofluorescent analysis of MCF-7 cells using 11503-1-AP (FRS2 antibody) at dilution of 1:25 and Alexa Fluor 488-conjugated AffiniPure Goat Anti-Rabbit IgG(H+L).



WB result of FRS2 antibody (11503-1-AP; 1:600; incubated at room temperature for 1.5 hours) with sh-Control and sh-FRS2 transfected SH-SY5Y cells.